

NYU IFA LIBRARY



3 1162 04538750 4



The  
McAfee  
Library  
of Ancient  
Art



NEW YORK UNIVERSITY LIBRARIES  
INSTITUTE OF FINE ARTS









CATALOGUE GÉNÉRAL  
DES  
ANTIQUITÉS ÉGYPTIENNES.  
(MUSÉE D'ALEXANDRIE).

---

LA NECROPOLI DI SCIATBI





SERVICE DES ANTIQUITÉS DE L'ÉGYPTE

---

# CATALOGUE GÉNÉRAL

DES

# ANTIQUITÉS ÉGYPTIENNES

(MUSÉE D'ALEXANDRIE)

---

N<sup>os</sup> 1 - 624

---

## LA NECROPOLI DI SCIATBI

PER EVARISTO BRECCIA

---

VOLUME SECONDO

(TAVOLE)



LE CAIRE

IMPRIMERIE DE L'INSTITUT FRANÇAIS

D'ARCHÉOLOGIE ORIENTALE

---

1912

Fine Arts

+

DT

57

.A3

.B8n

t.1

## INDICE DELLE TAVOLE<sup>(1)</sup>.

Tavola.

- A. Pianta generale della necropoli (parte scavata).  
 I. Pianta del sotterraneo A.  
 II. Veduta prospettica della parete settentrionale del vestibolo *d* (Sotterraneo A). — Sezione d'una parte della medesima parete.  
 III. Veduta prospettica d'una delle pareti lunghe nell'ambiente *g* (Sotterraneo A).  
 IV. Facciata d'ingresso alla camera sepolcrale *g'* (Sotterraneo A).  
 V. Cline-sarcofago. Camera sepolcrale *g'*: la porta veduta dall'interno.  
 VI. 1. Monumenti sopra terra.  
 2. Monumenti sopra terra. Atrio del sotterraneo A.  
 VIII. 3. Sotterraneo A: Vestibolo *g*, camera sepolcrale *g'*.  
 IX. 4. " " : Interno della Camera sepolcrale *g'*.  
 X. 5. " " : Veduta del portico *d*.  
 XI. 6. " " : Particolare del portico *d*.  
 XII. 7. " " : Parete occidentale dell'Atrio *f*.  
 XIII. 8. " " : Parete settentrionale della camera *e*.  
 XIV. 9. " " : Interno della camera *e*.  
 XV. 10-12. " " : Cellette sepolcrali della camera *h*.  
 XVI. 13-15. Monumenti e fosse; 16. Sotterraneo A, camera *e*.  
 XVII. 17-18. Monumenti sepolcrali.  
 XVIII. 19. Altare; 20. Sotterraneo A, vestibolo *g*.  
 XIX. 21. Frontone di una celletta sepolcrale; 22. Sotterraneo B, nicchiette contenenti urne cinerarie.  
 XX. 23. Stele a rilievo; 24. Stele di *Μαννίας*.  
 XXI. 25-26. Stele a rilievo.  
 XXII. 27. Stele dipinta di . . . ] *Ξενος μακεδών*.  
 XXIII. La medesima a colori.  
 XXIV. 28. Particolare del Mosaico di Pompei (Alessandro Magno); 29. Particolare della stele di . . . ] *Ξενος μακεδών*.  
 XXV. 30. Stele sepolcrale dipinta.  
 XXVI. La medesima a colori.

<sup>(1)</sup> Tutti i disegni e gli acquerelli sono opera del prof. M. Bartolci, disegnatore del Museo Greco-Romano; la grandissima maggioranza delle fotografie sono dovute ai signori Reiser e Binder della ditta omonima, soltanto le figure 13-15 della Tav. XVI sono state tratte da negative eseguite dal signor C. Mamluk et la fig. 22 nella Tav. XIX, da una negativa del Dott. A. Bietti.

## ΤΕΡΑΚΑ.

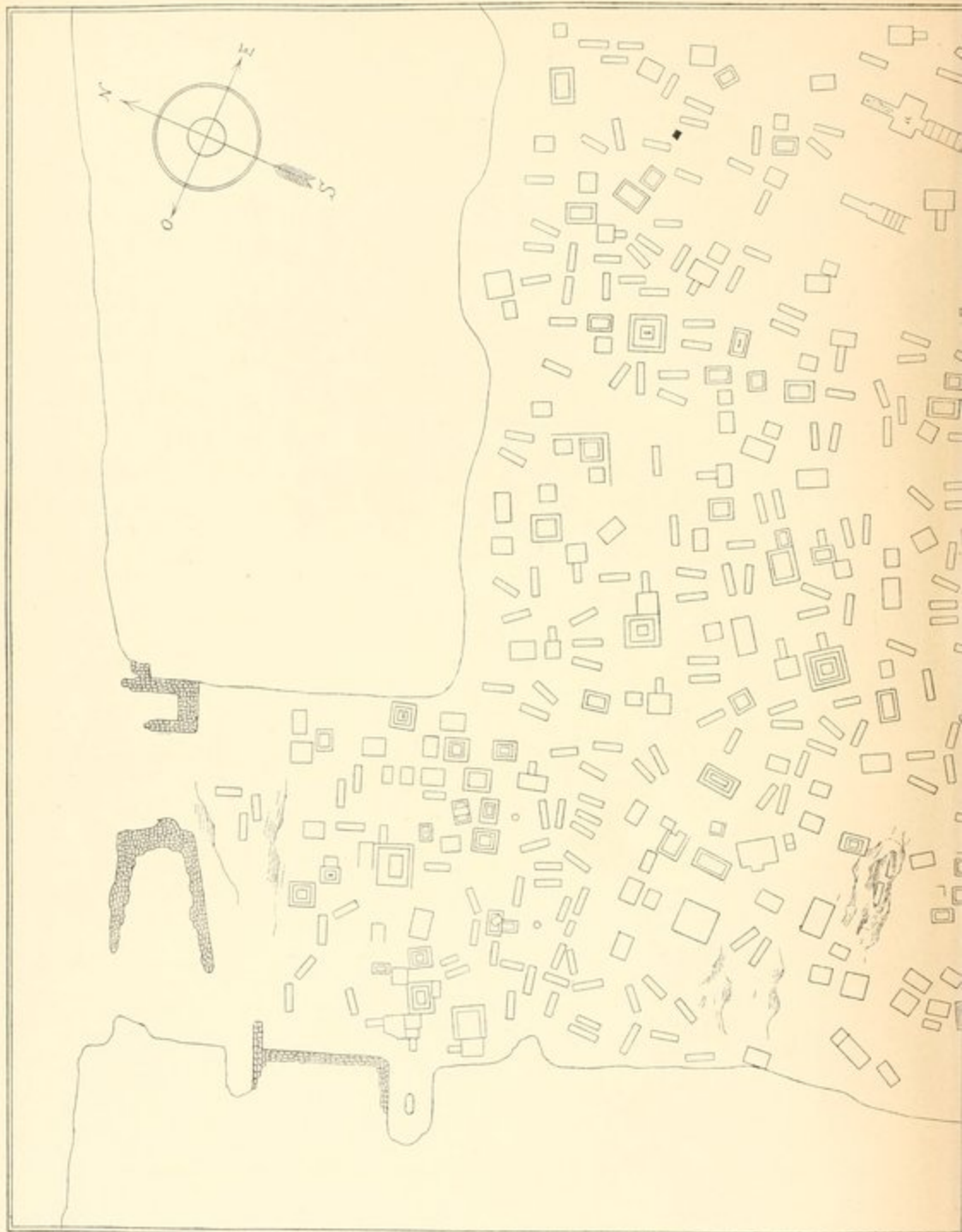
- XXVII. 31. Stele dipinta di *Πολύβοκτος Ιπποκίκου Θεσσαλός*.  
 XXVIII. 32. Stele dipinta di *Θρασυμήδης*.  
 XXIX. 33. Stele dipinta.  
 XXX. 34. Stele dipinta per *Ισοδόρα κυρηναία*.  
 XXXI. La medesima a colori.  
 XXXII. 35-36. Stele dipinte.  
 XXXIII. 37-38. Stele dipinte.  
 XXXIII. Stele dipinta (riproduzione a colori).  
 XXXIV. 39-41. (Calcere e terra cotta) Sirene.  
 XXXV. 42-43. Urne cinerarie (Terra cotta).  
 XXXVI. 44-45. - - -  
 XXXVII. 46-47. - - -  
 XXXVIII. 48-49. - - -  
 XXXIX. 50-51. - - -  
 XL. 52-53. - - -  
 XLI. 54-56. - - -  
 XLII. 57-58. - - -  
 XLIII. 59-60. - - -  
 XLIV. 61-63. - - -  
 XLV. 64. Pyxis; 65-66. Vasi smaltati d'azzurro (Terra cotta).  
 XLVI. 67. Pyxis (coperchio); 68-70. Lechiti.  
 XLVII. 71-72. Peliche (Terra cotta).  
 XLVIII. 73-74. Peliche (Terra cotta).  
 XLIX. 75-83. Vasi diversi (Terra cotta).  
 L. 84-89. - - -  
 LI. 90-95. - - -  
 LII. 96-101. - - -  
 LIII. 102-104. - - -  
 LIV. 105-109. - - -  
 LV. 110-115. - - -  
 LVI. 116-124. - - -  
 LVII. 125-129. - - -  
 LVIII. 130-132. - - -  
 LIX. 133-138. - - -  
 LX. 139-144. Vasi diversi (Alabastro).  
 LXI. 145-147. Vasi diversi (Alabastro); 148-151. (Vetro); 152. Osso; 153. Statuetta (Osso).  
 LXII. 154-156. Figurine femminili in piedi (Terra cotta dipinta).  
 LXIII. 157-159. - - - -  
 LXIV. 160-165. - - - -

TAVOLA.

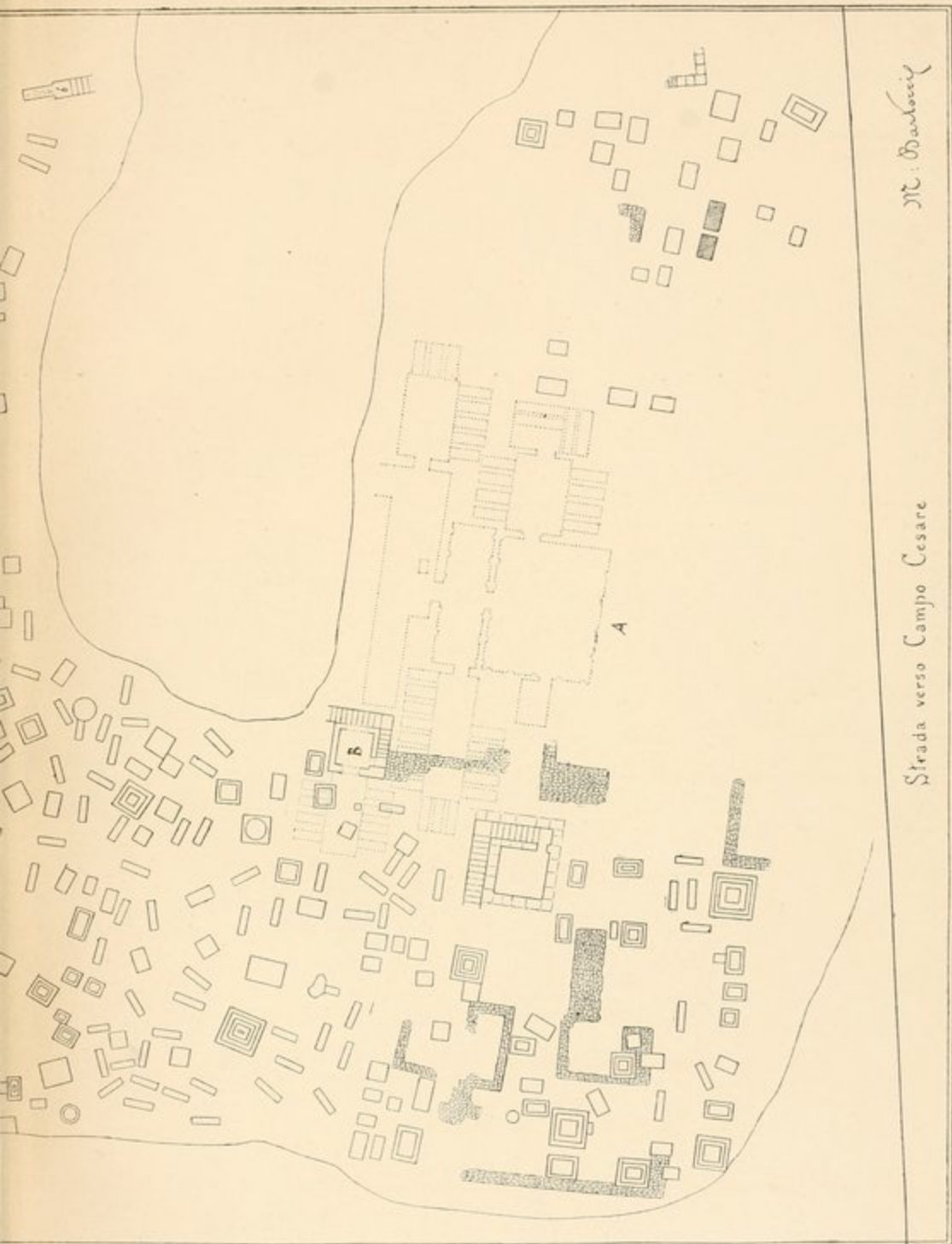
- LXV. 166-171. Figurine femminili in piedi (Terra cotta dipinta).  
 LXVI. 172. Suonatrice di trigono; 173 e 174. Portatrici di corone.  
 LXVII. 175-178. Figurine femminili in piedi (Terra cotta dipinta).  
 LXVIII. 179-182. Figurine femminili sedute -  
 LXIX. 183-186. Statuine diverse -  
 LXX. 187-197. Figurine diverse -  
 LXXI. 198-213. Testine varie (Terra cotta dipinta).  
 LXXII. 214-219. Fanciulli -  
 LXXIII. 220-225. Fanciulli -  
 LXXIV. 226-236. Fanciulli - Maschere - Animali etc. (Terra cotta dipinta).  
 LXXV. 237. Divinità (?); 238. Ercole; 239. Ermafrodito -  
 LXXVI. 240-241. Corone di fiori -  
 LXXVII. 242-245. Fiori artificiali; 246-249. Braccialetti (Terra cotta e bronzo).  
 LXXVIII. 250-255. Medaglioni e pendenti (Terra cotta dorata).  
 LXXVIII. Collana (Terra cotta dorata).  
 LXXIX. 256-266. Teste di Medusa, Bucrani, Scudi (Stucco dorato).  
 LXXX. 267-274. Frammenti di vasi diversi (Terra cotta smaltata).  
 LXXXI. 275-276. Frammenti di vasi diversi (Terra cotta smaltata); 277-280. Frammenti di vasi  
 diversi (Tipo di Gnatia).  
 LXXXII. 281-292. Frammenti di vasi diversi (Tipo di Gnatia).





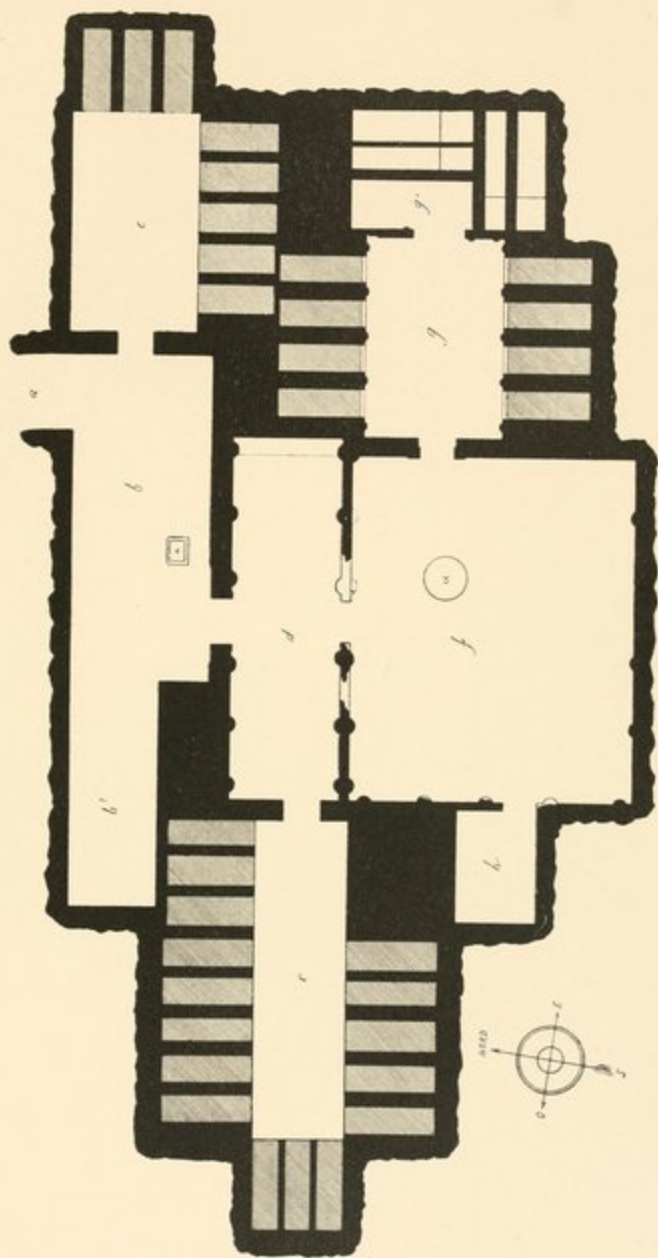




*M. Barbicini*

Strada verso Campo Cesare

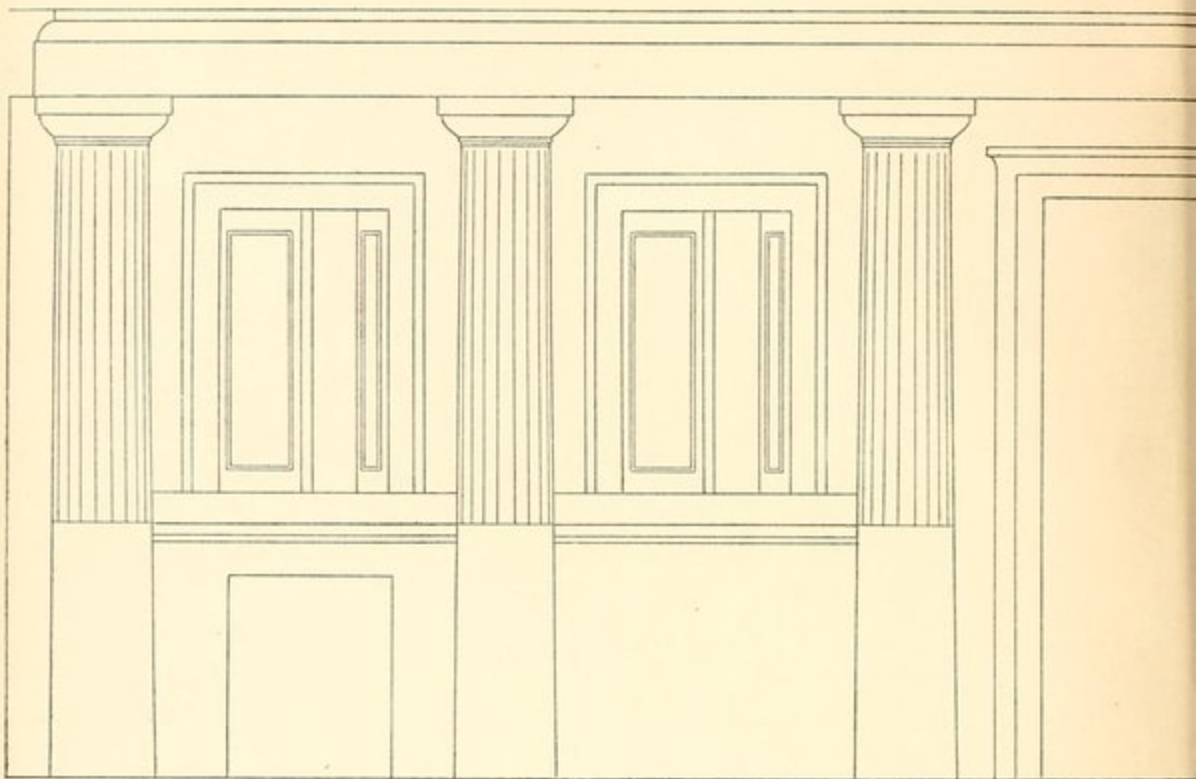




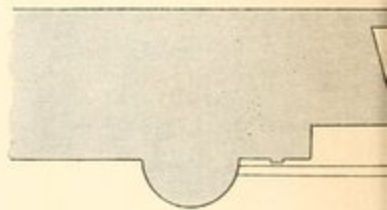
Pianta del Sotterraneo A.



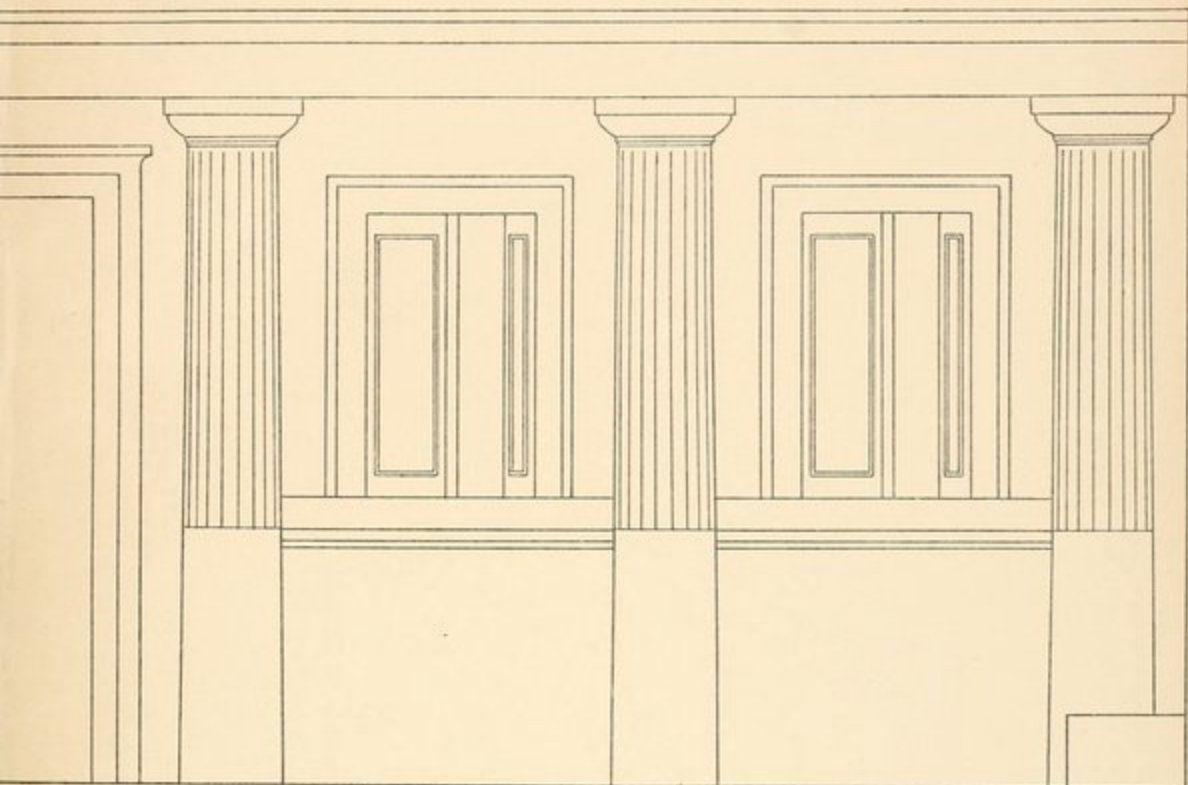
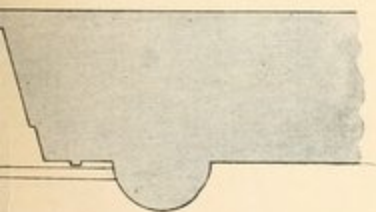




Veduta prospettica della parete sette



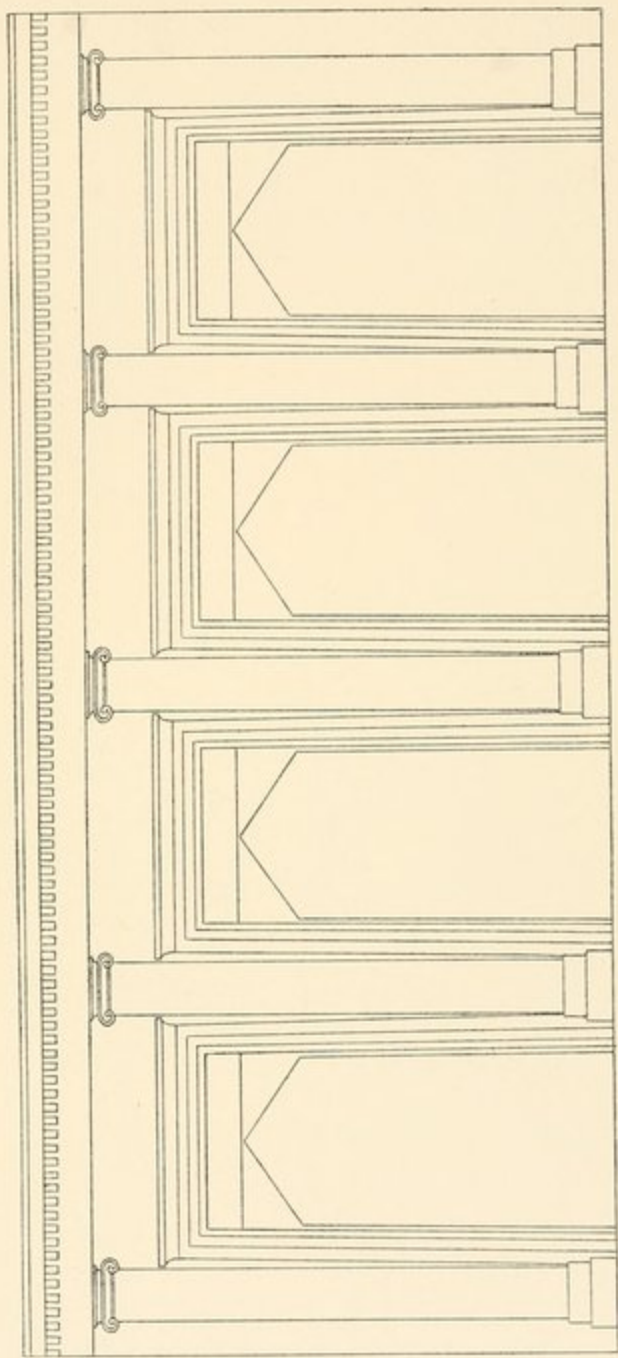
Sezione d'una part

le del vestibolo *d* (Sotterraneo A).

medesima parete.

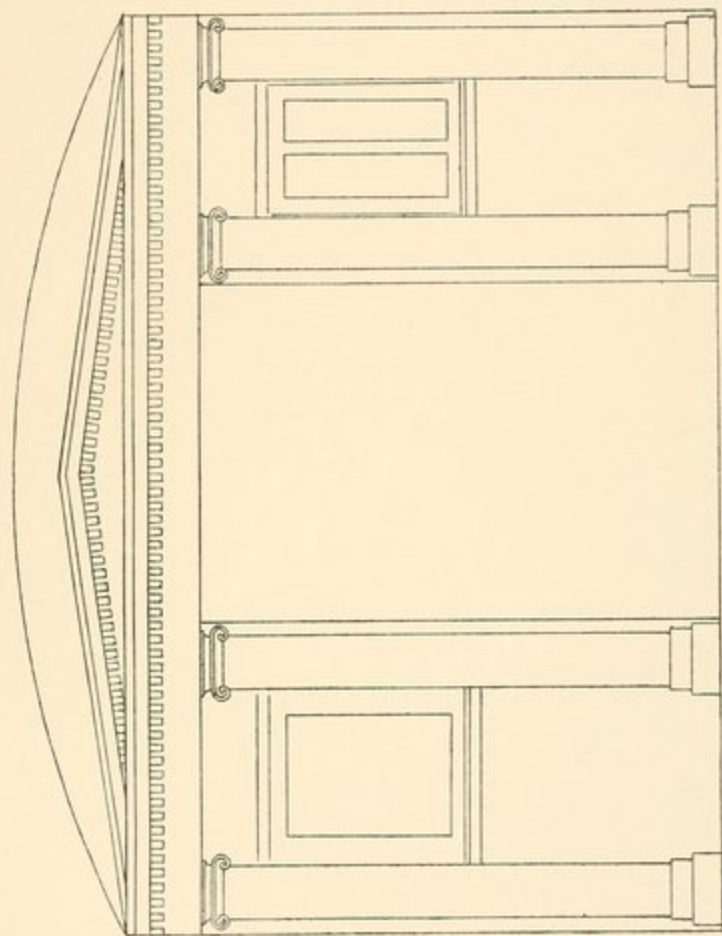






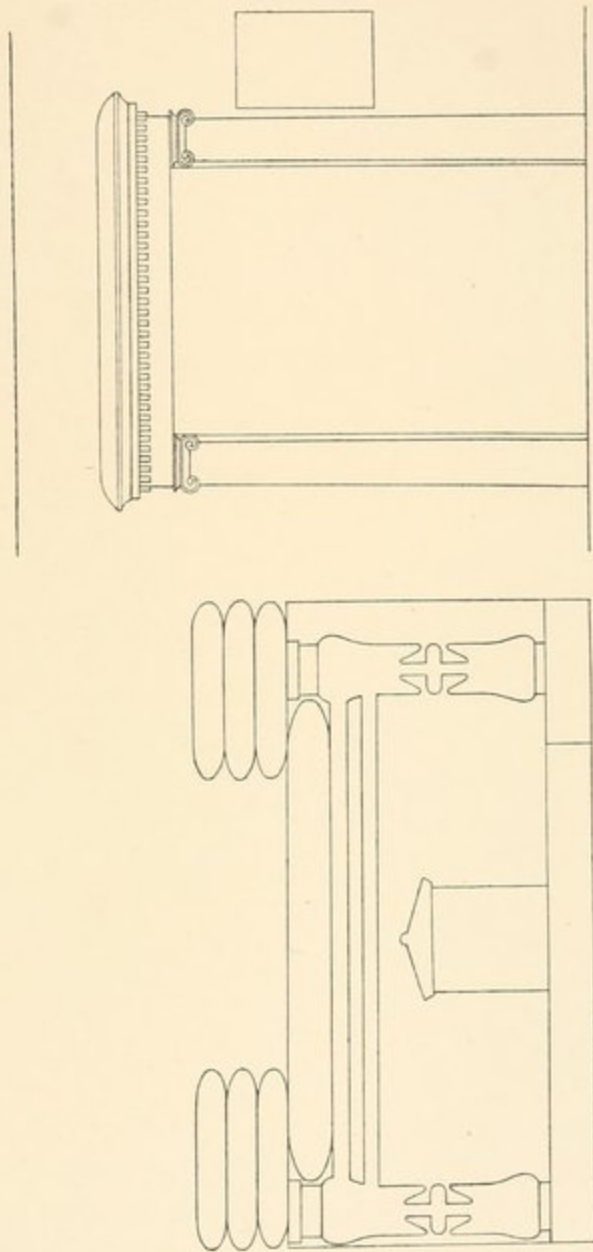
Veduta prospettica d'una delle due pareti lunghe nell'ambiente *f* (Sotterraneo A.).





Facciata d'ingresso alla camera sepolcrale *g'* (Sotterraneo A.).

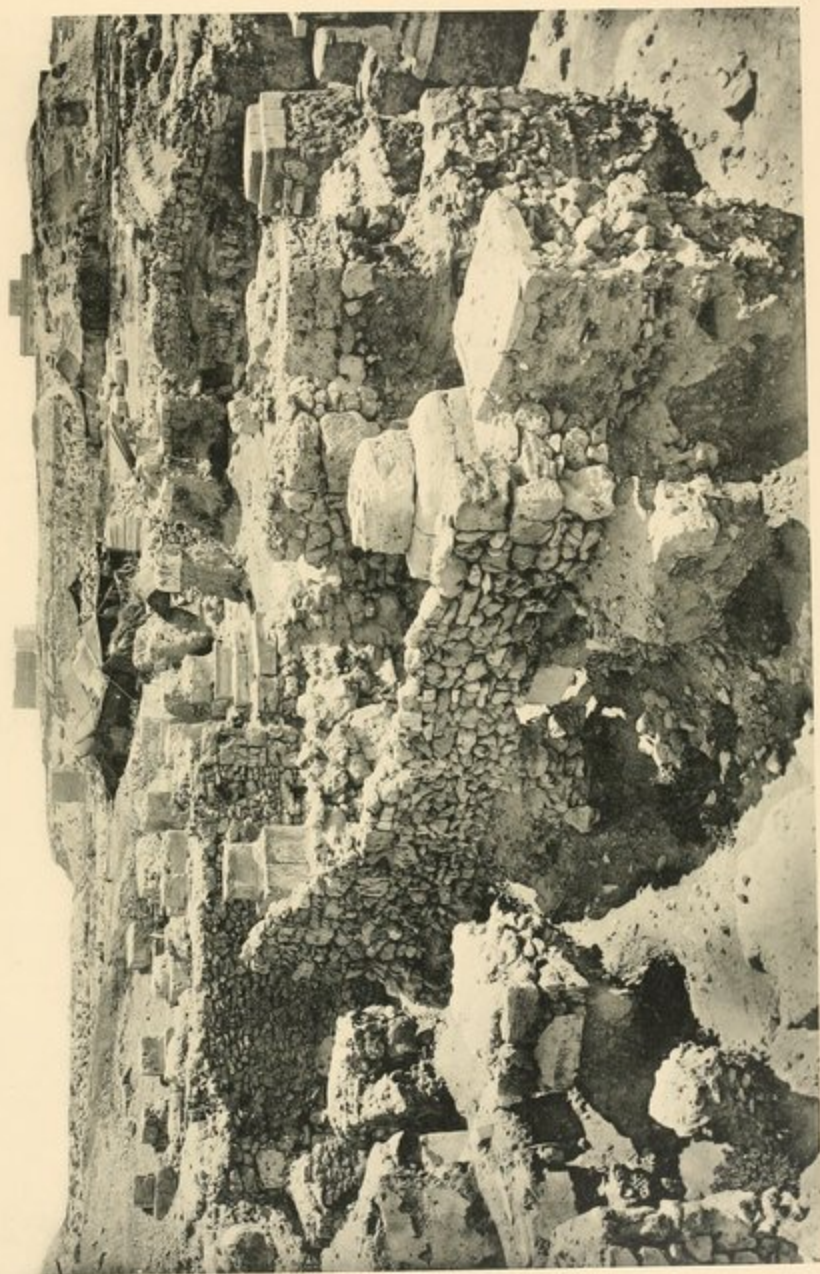




Cline-sarcofago.

Camera sepolcrale *g'*: la porta veduta dall'interno.

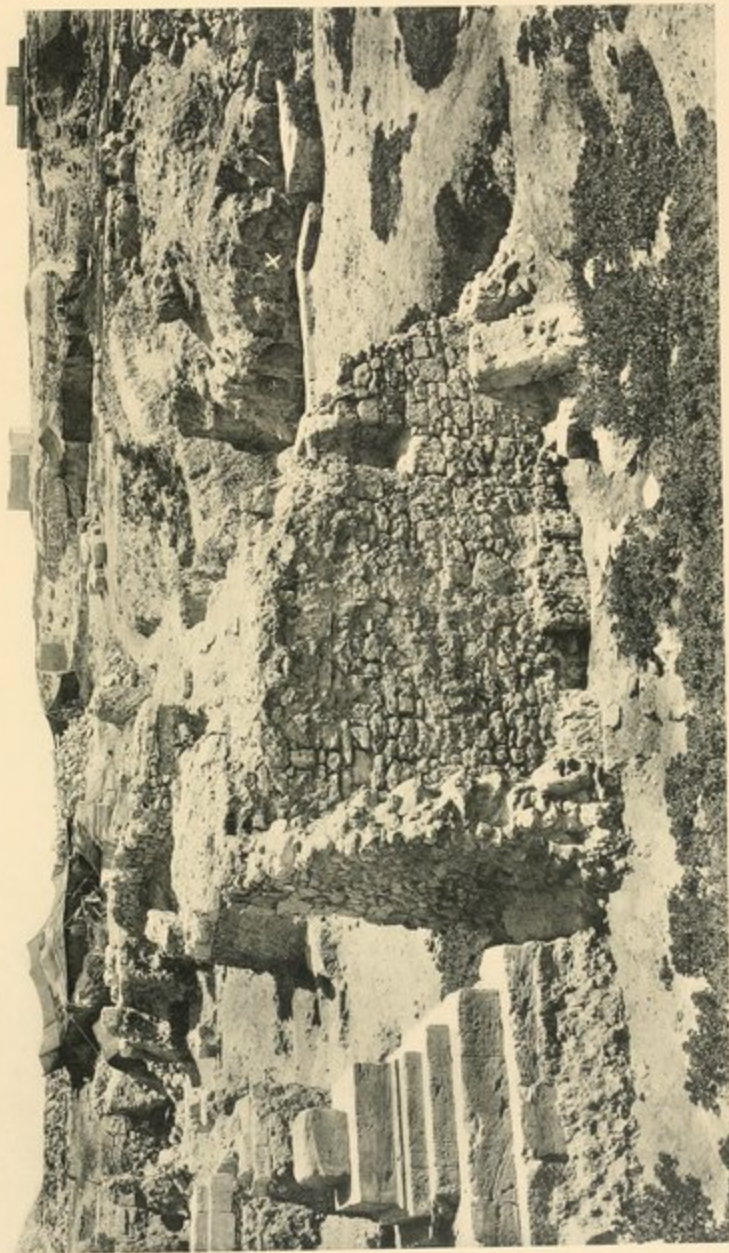




1. Necropoli di Sciatbi. — Monumenti sopra terra.







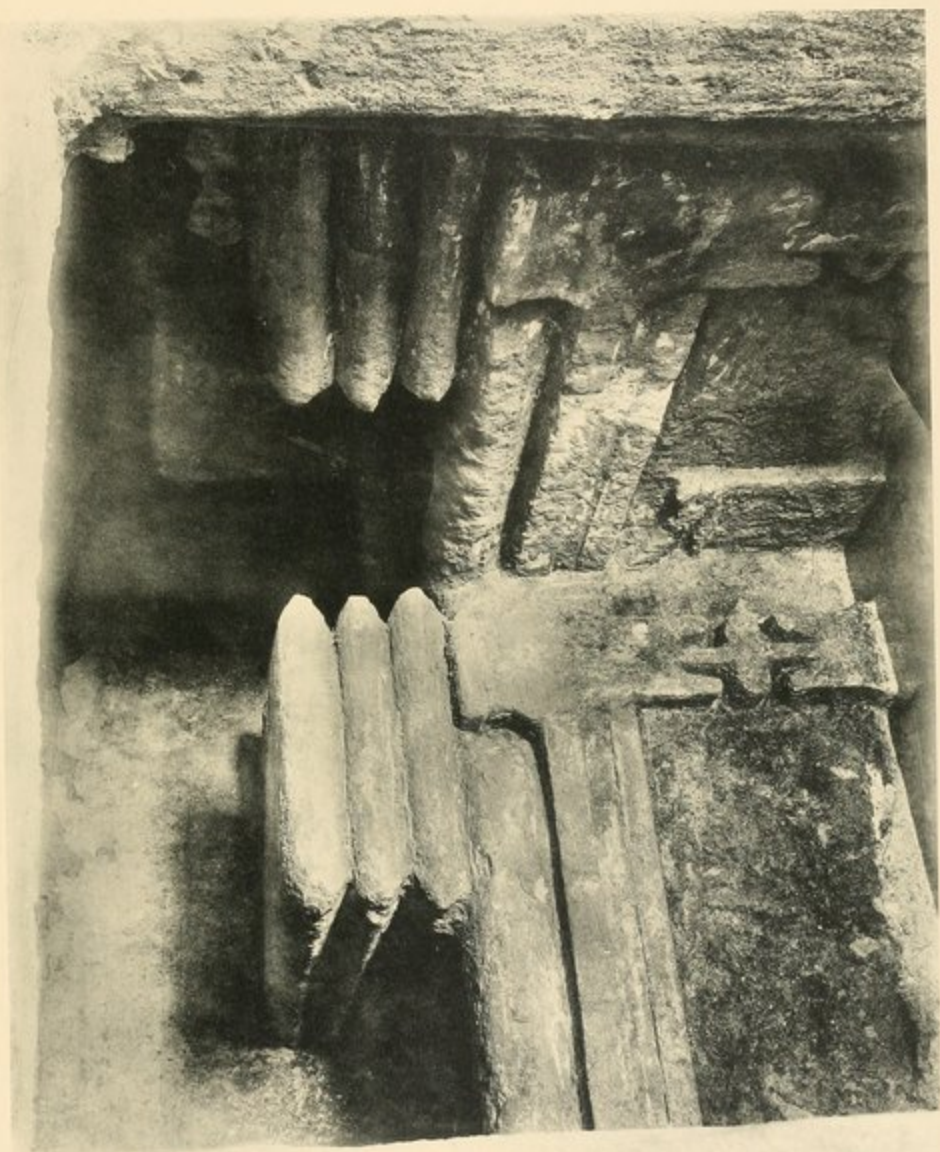
2. Necropoli di Sciatibi. — X Atrio del sotterraneo A.





3. Sotterraneo A - Vestibolo g, camera sepolcrale g i.





4. Sotterraneo A. - Interno della Camera sepolcrale g<sup>1</sup>.





5. Sotterraneo A. — Veduta del portico d.

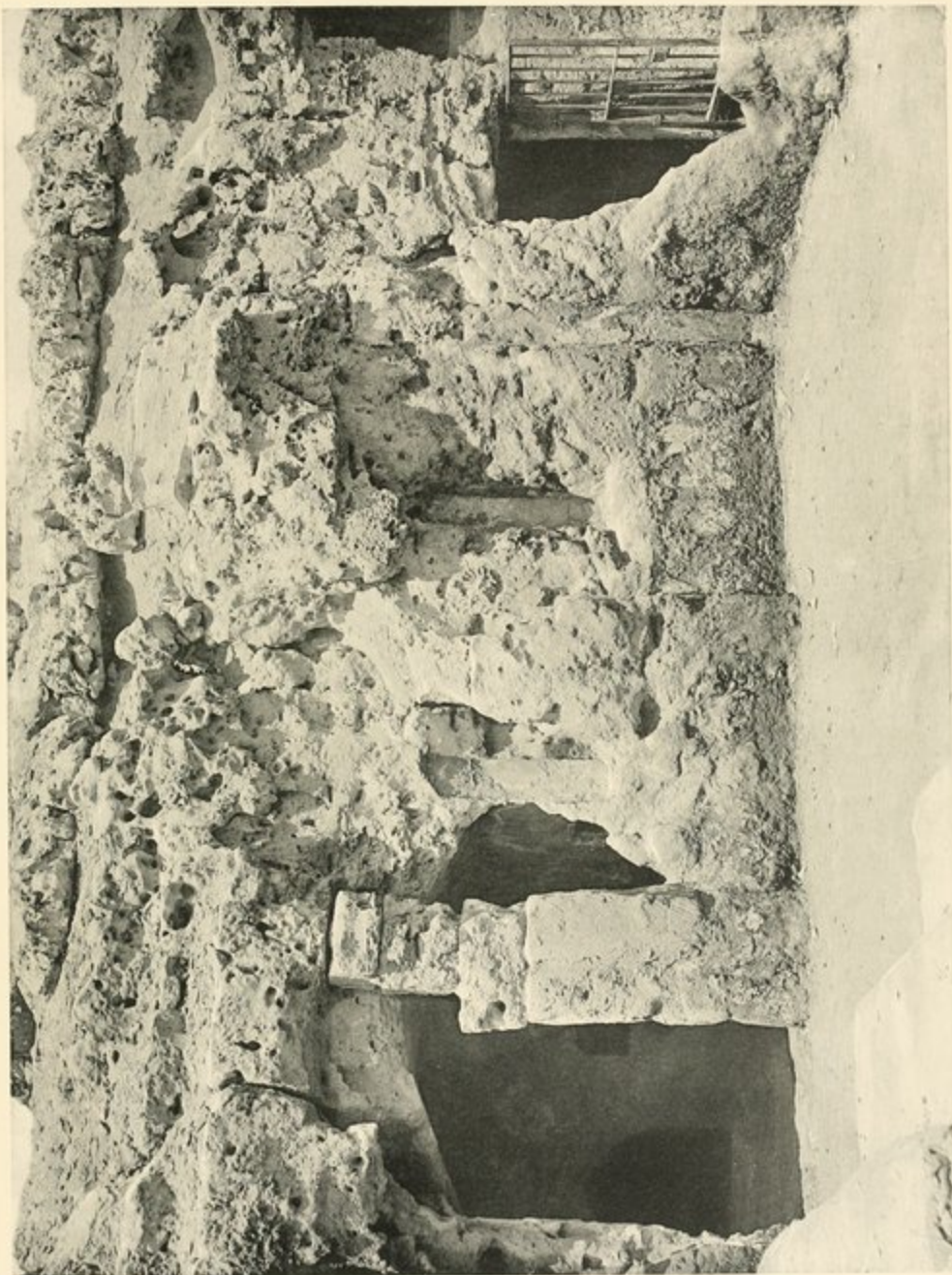






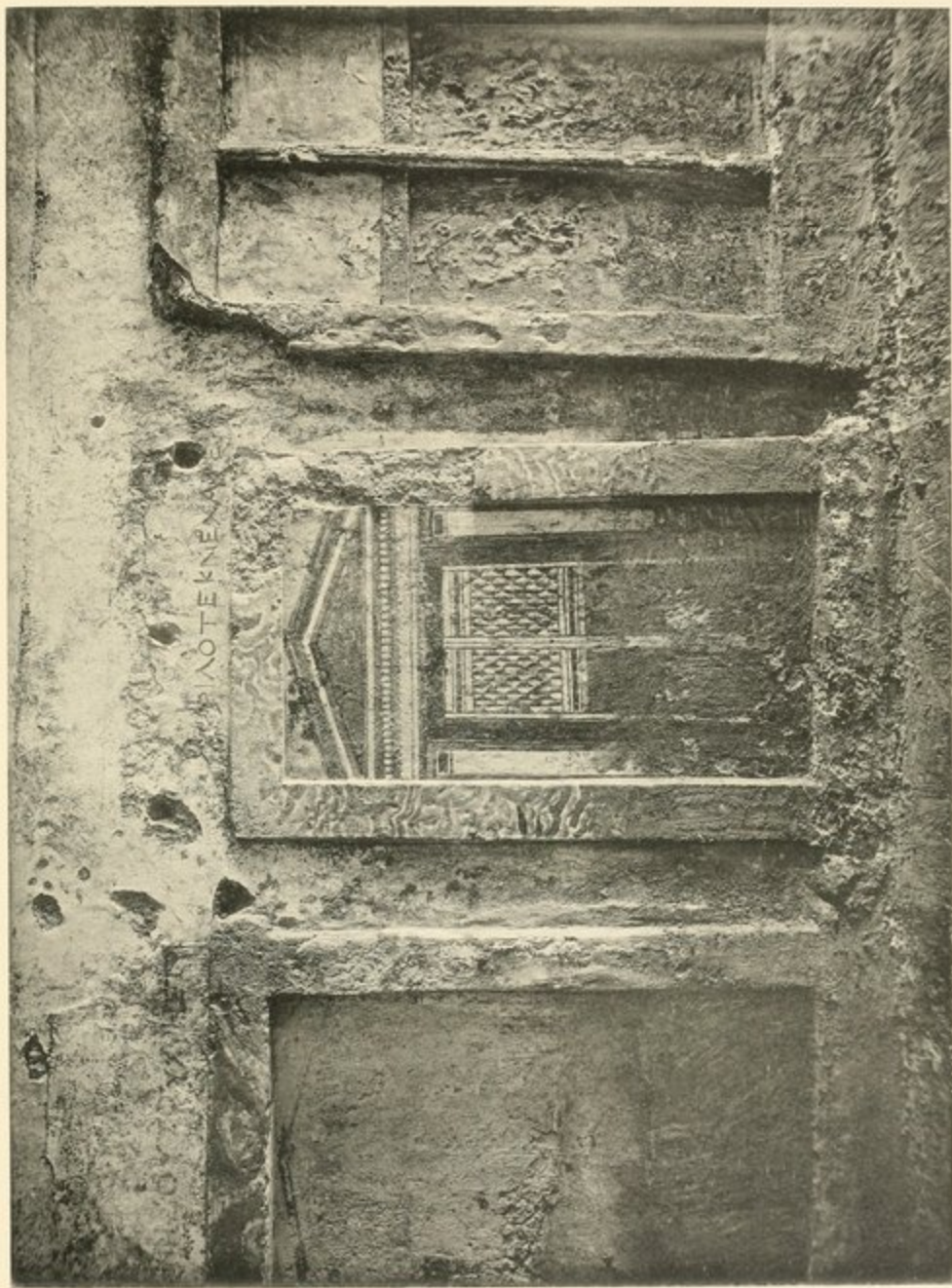
6. Sotterraneo A. — Particolare del portico d.





7. Sotterraneo A. — Parete occidentale dell' Atrio 4.





B. Sotterraneo A. - Parete settentrionale della camera e.





9. Sotterraneo A. — Interno della camera e.







10



11



12

Sotterraneo A. — Cellette sepolcrali della camera h.





14



16



13

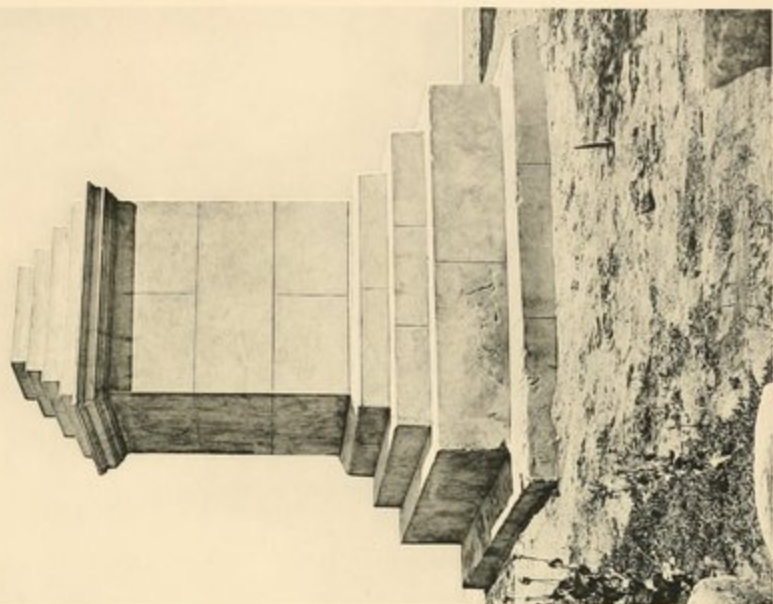


15

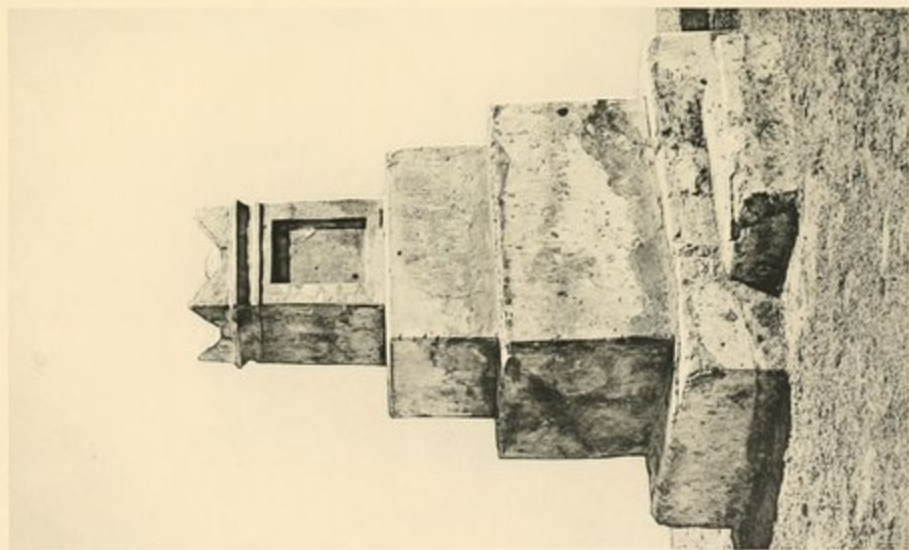
Monumenti e fosse.

Sotterraneo A. Camera e.





18



17





19. Altare.

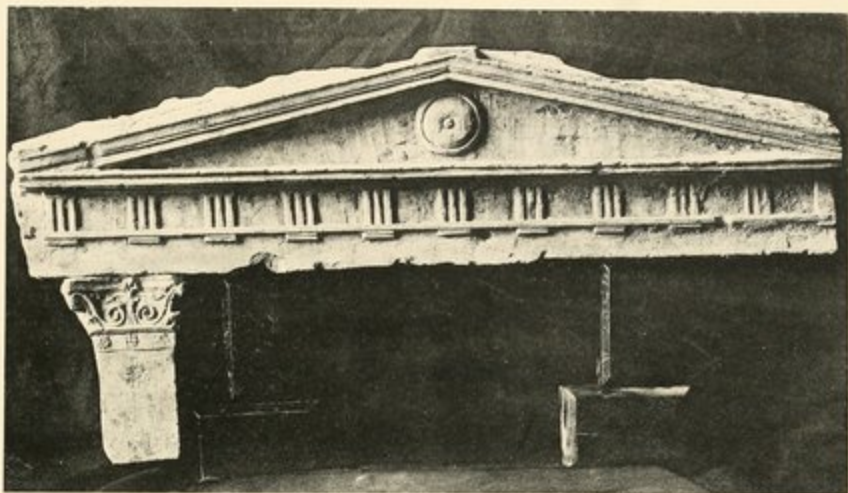


20

Sotterraneo A, vestibolo g.







21

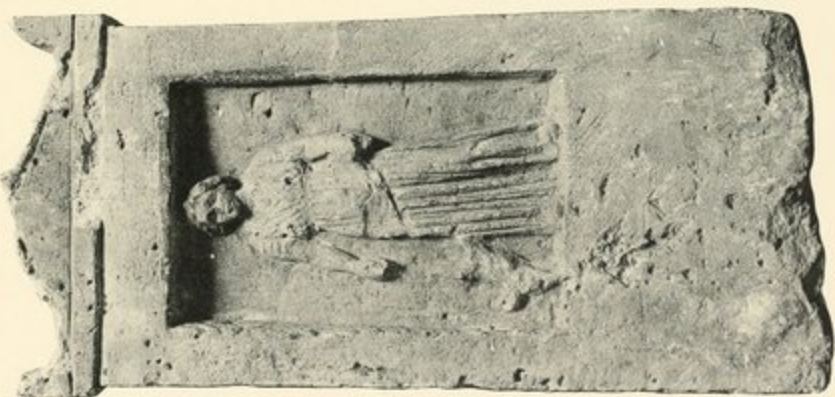
Frontone di una celletta sepolcrale.



22

Sotterraneo B. — Nicchie contenenti urne cinerarie.





23

Stele a rilievo.



24

Stele di Mastigias.





20



25

Stele a rilievo.





27

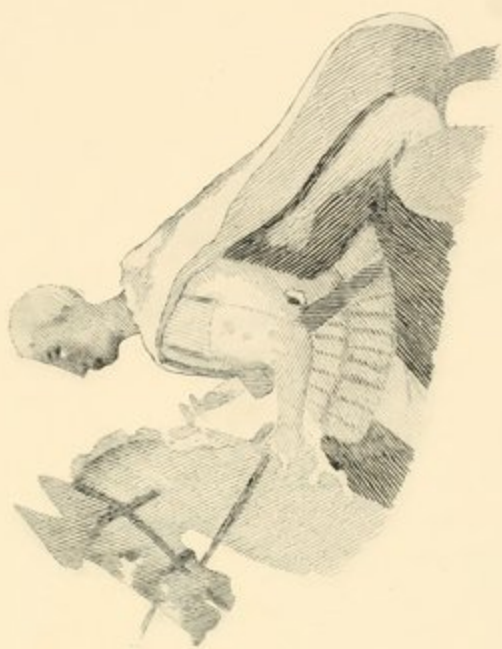
Stele dipinta di ... |  $\xi\iota\upsilon\sigma\zeta$   $\mu\alpha\chi\iota\sigma\theta\acute{\omicron}\nu$ .











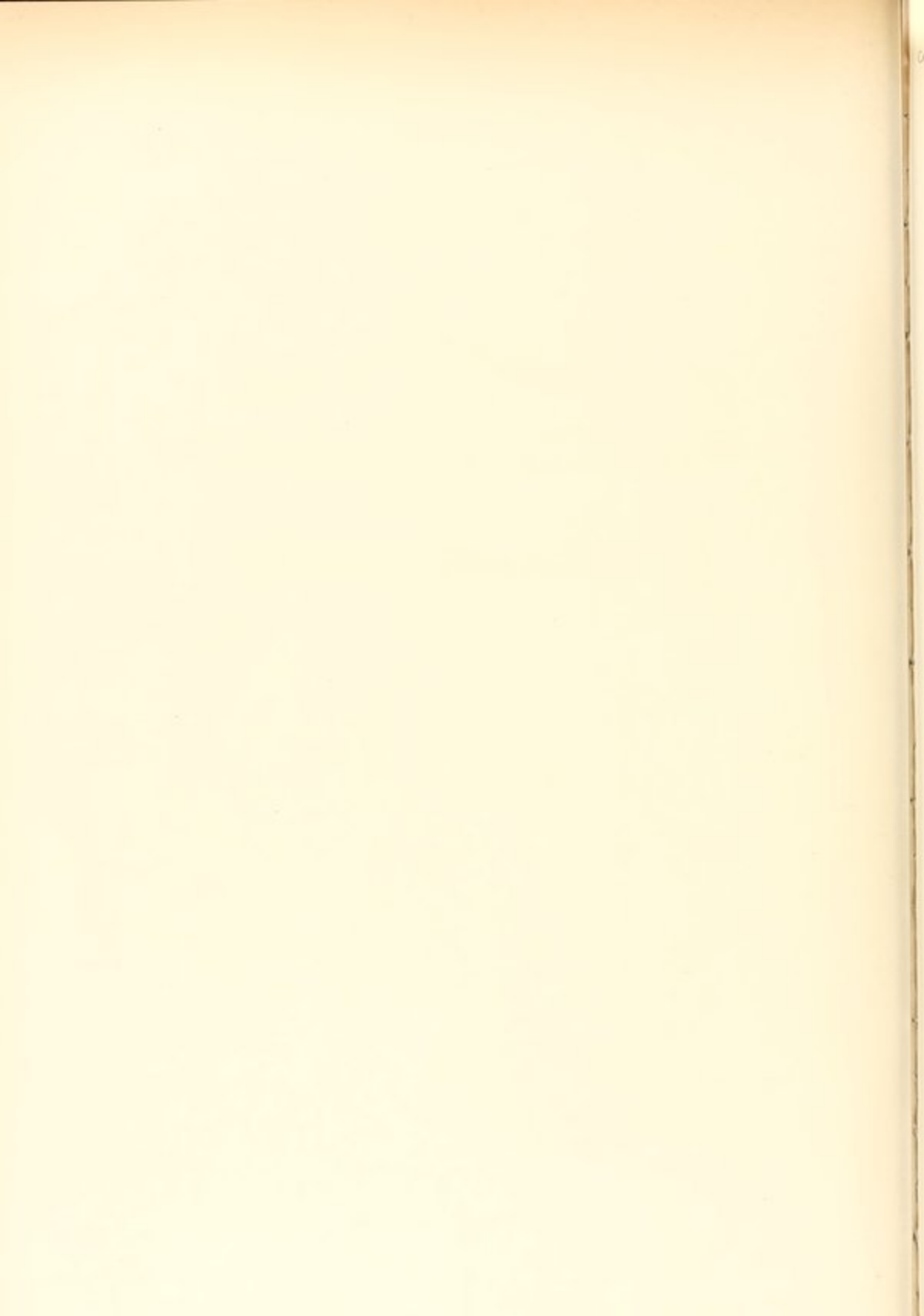
29

Particolare della Stele di ... | 346; 421300.



28

Particolare del Mosaico di Pompei (Alessandro Magno).





30

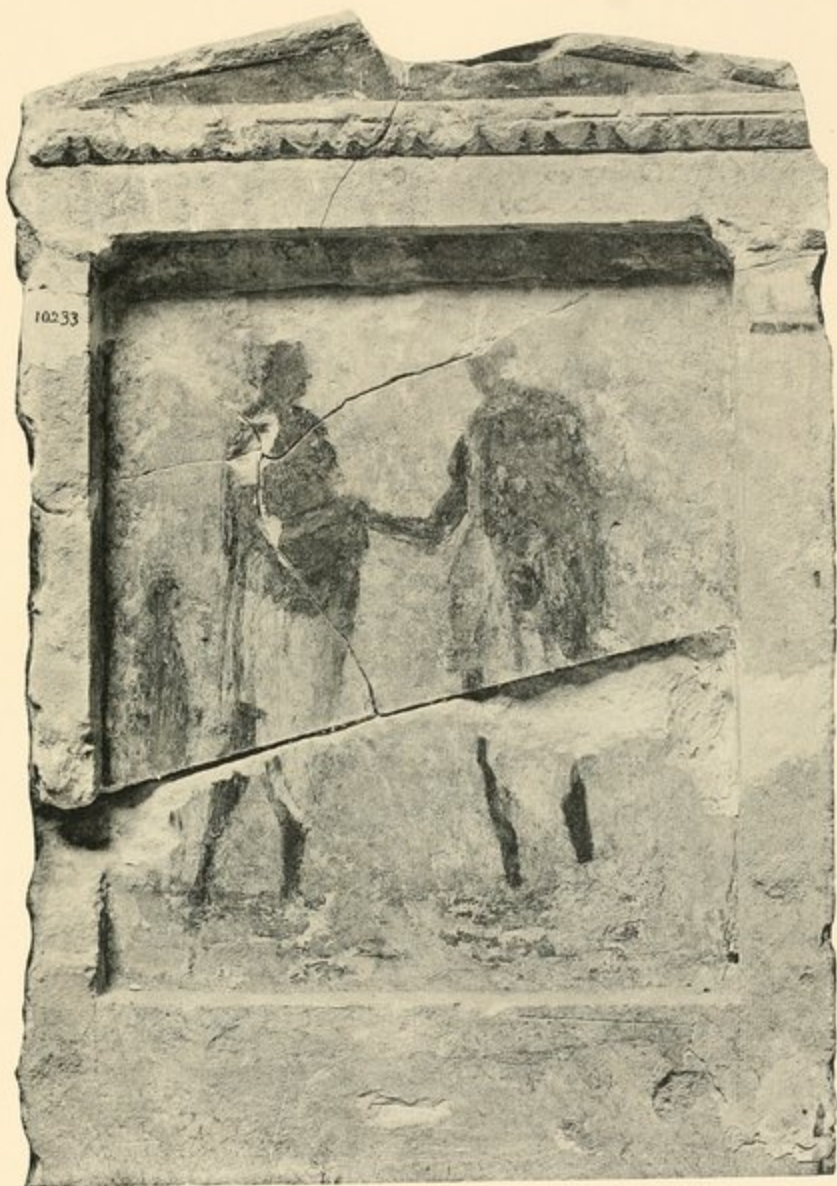
Stele sepolcrale dipinta.



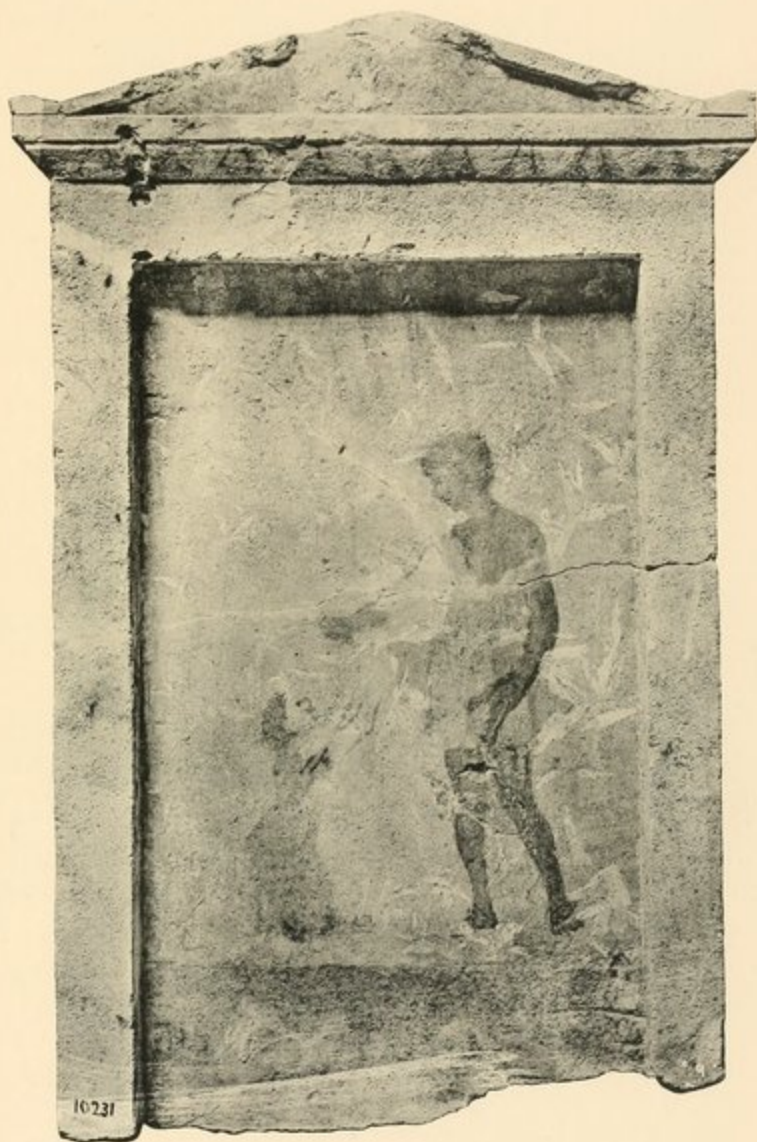






























35



36

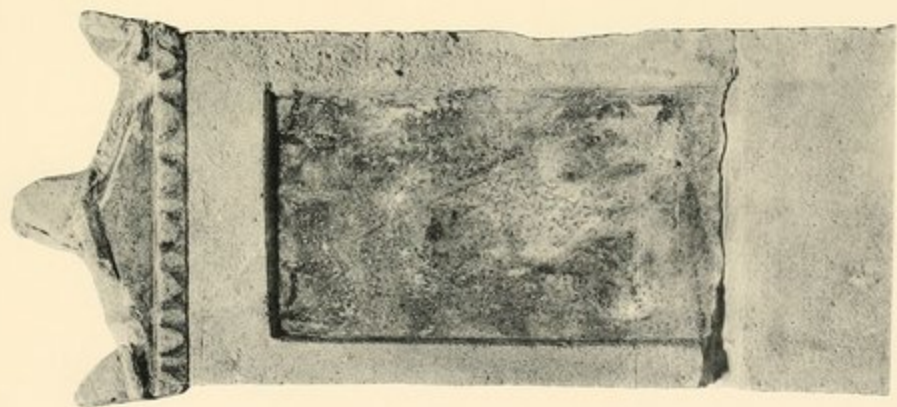
Stele dipinte.





*M. Barbier*





37

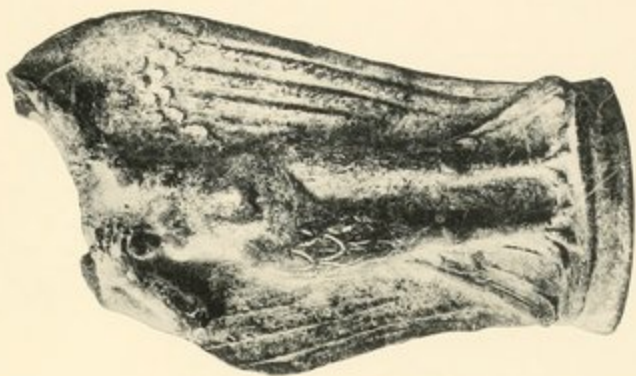
Stele dipinte.



38







41



40



39

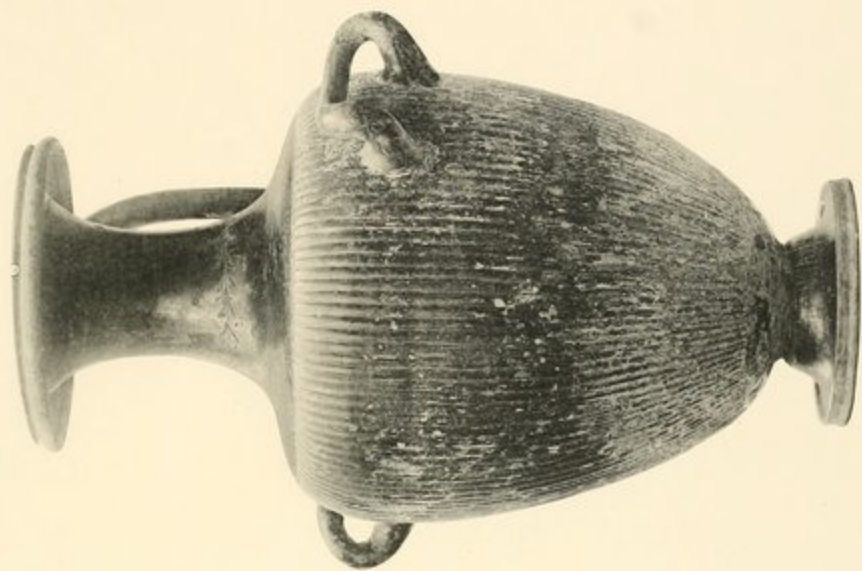
Sirene.





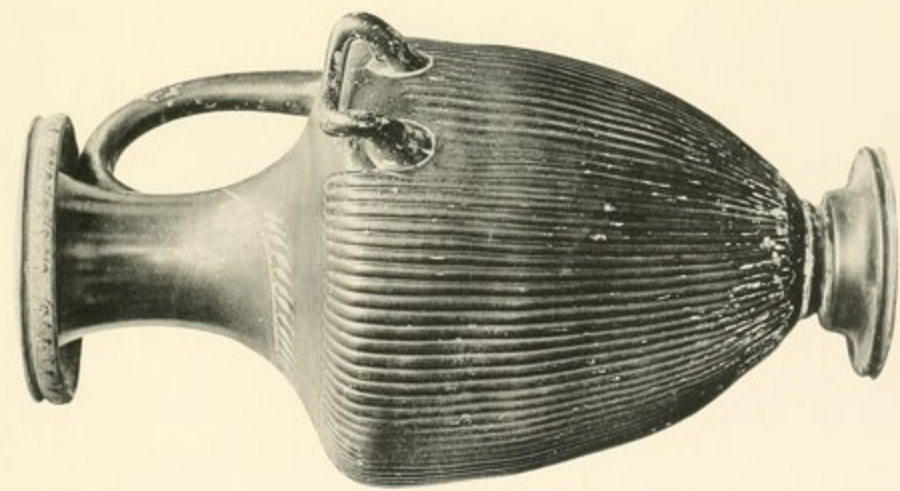
42

Urne cinerarie

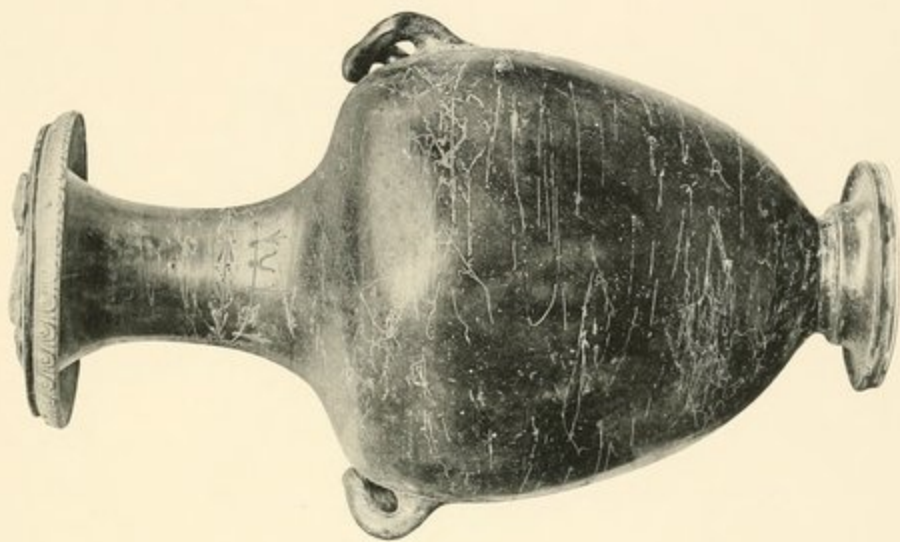


43



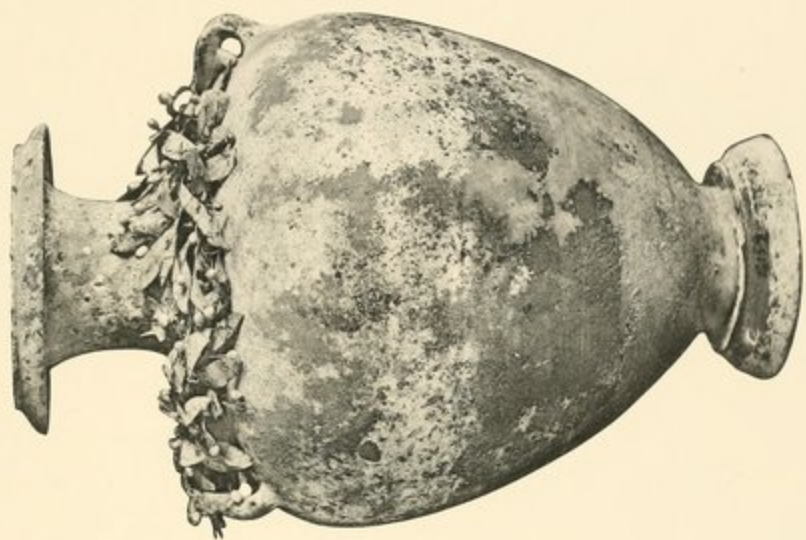


44

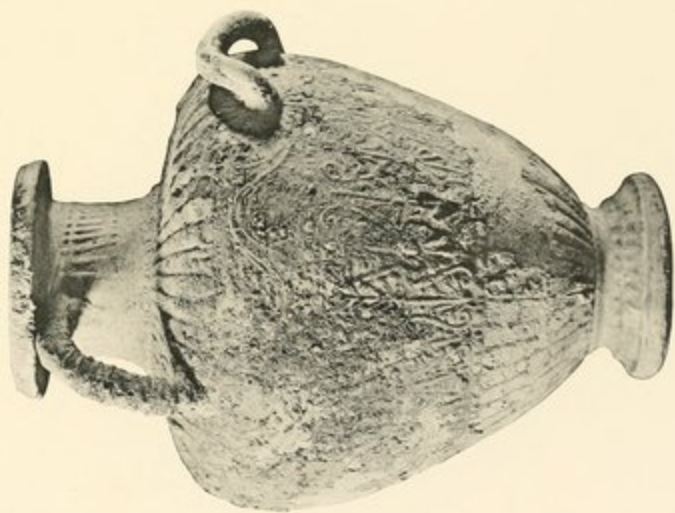


45





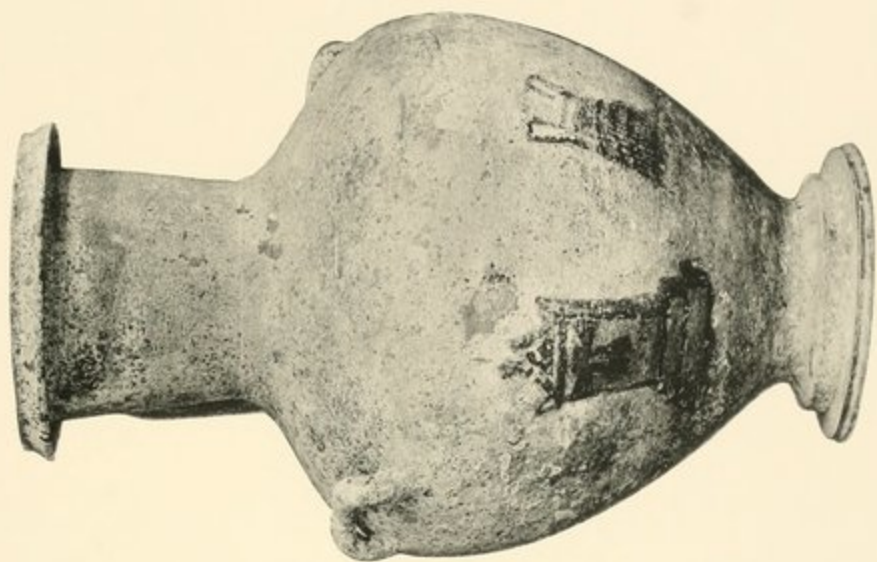
47



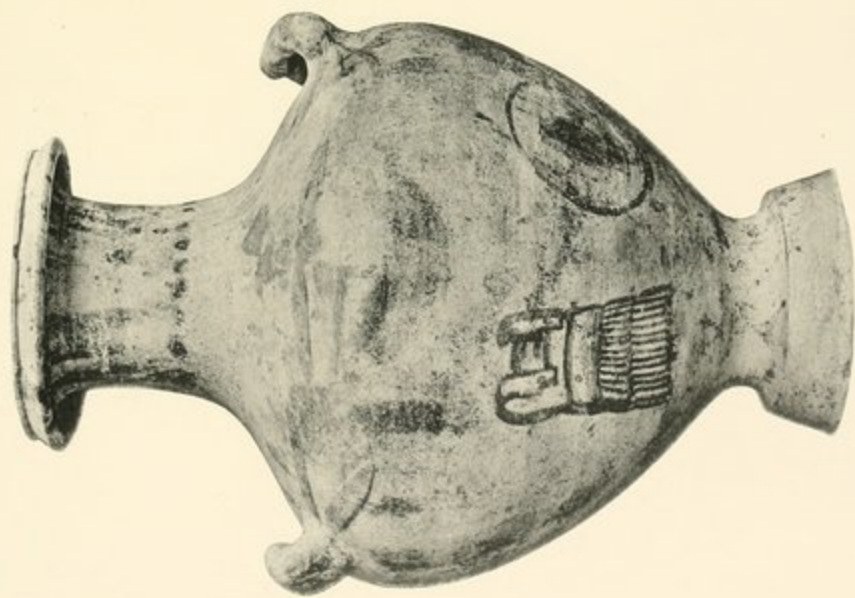
46







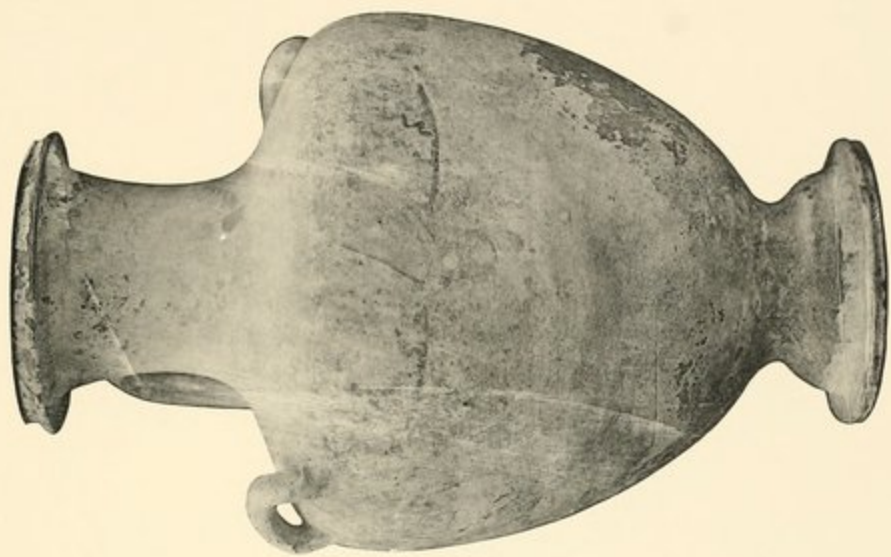
40



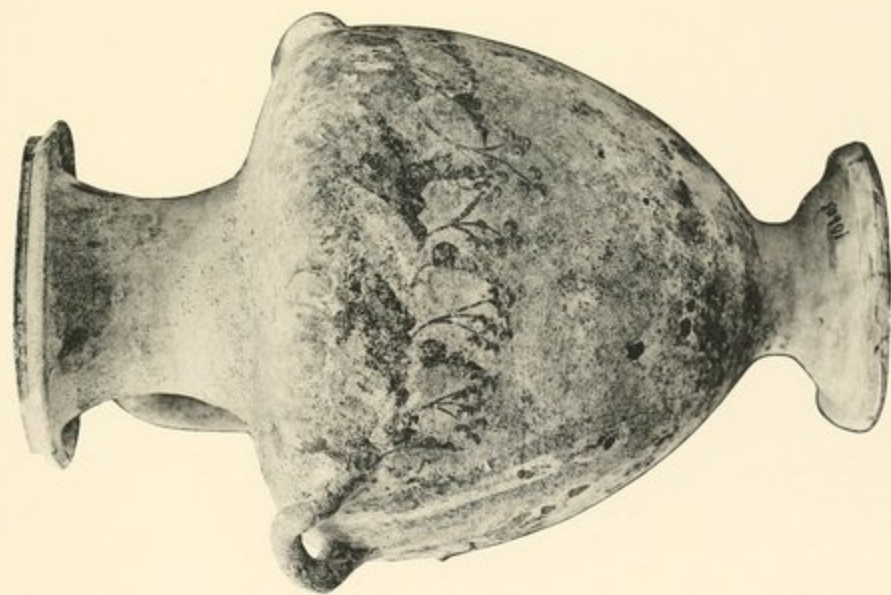
43

Urne cinerarie.





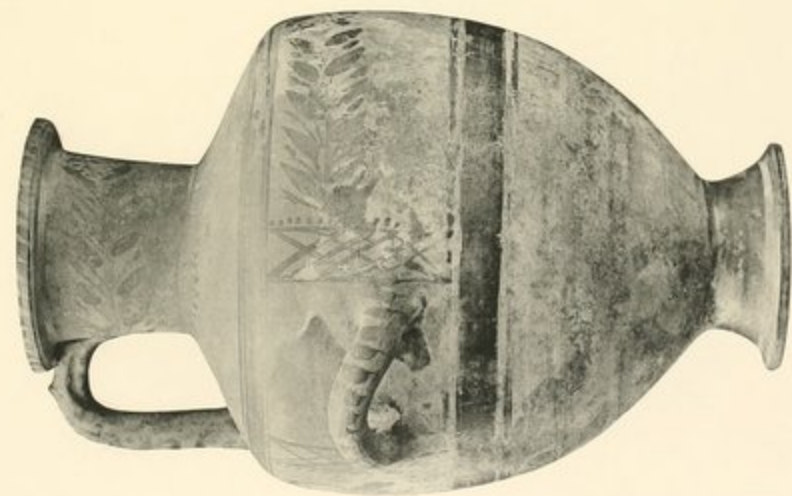
51



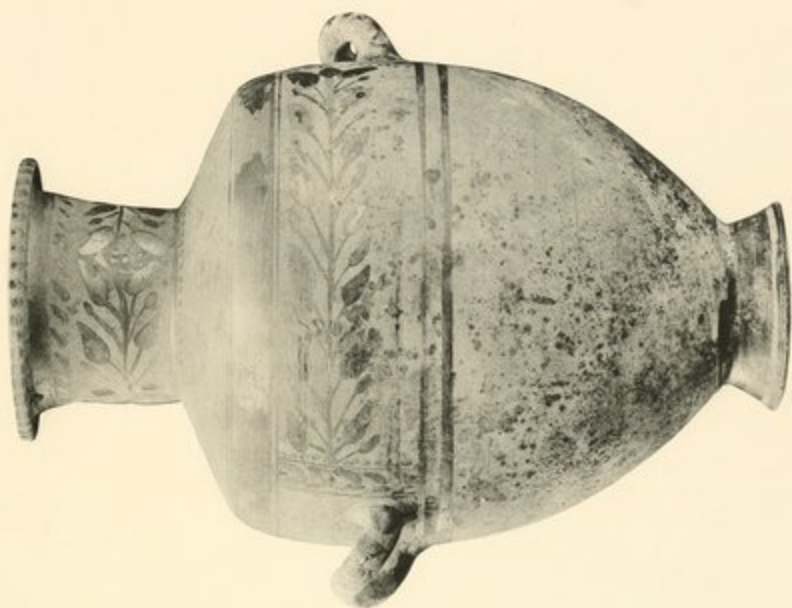
50

Urne cinerarie.





52



53





56



55

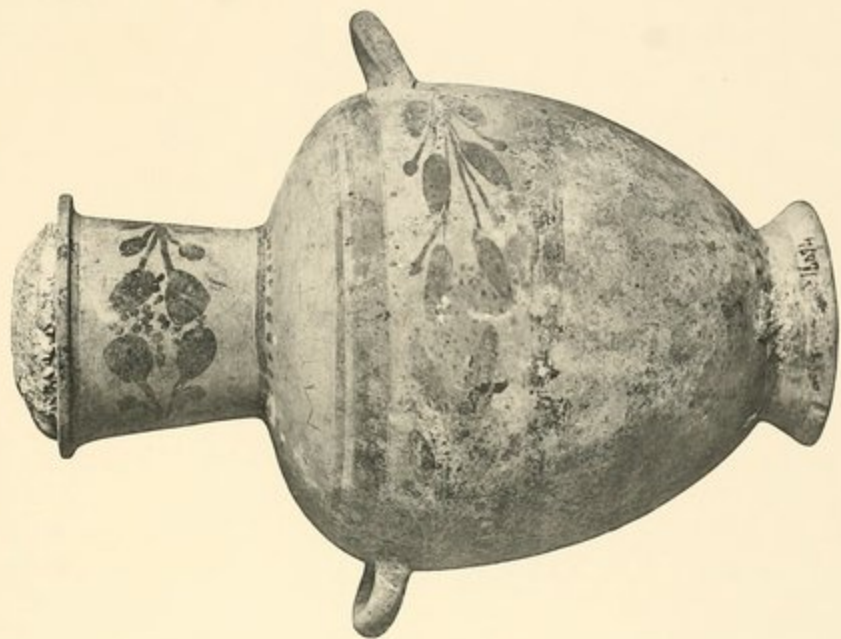


54

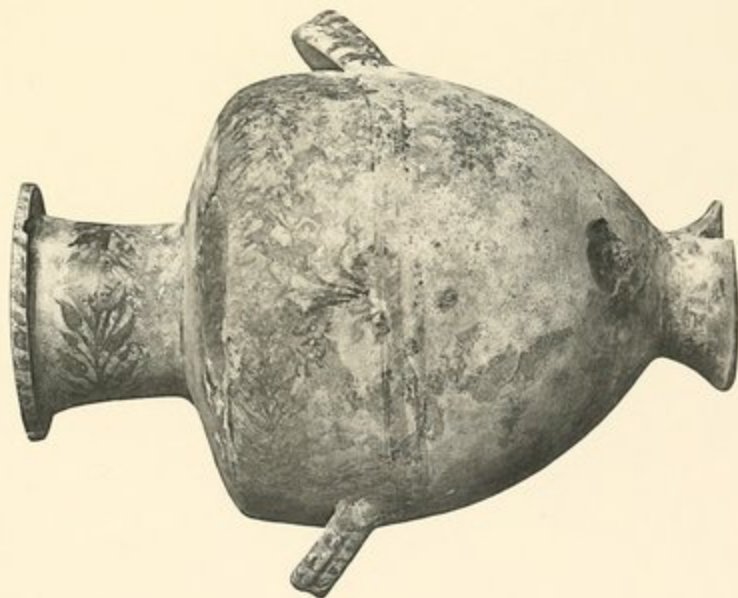
Urne cinerarie.







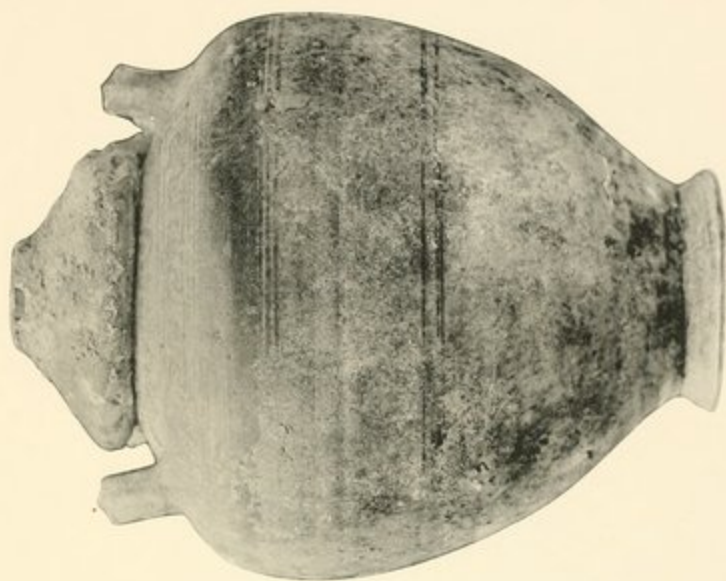
58



57

Urne cinerarie.





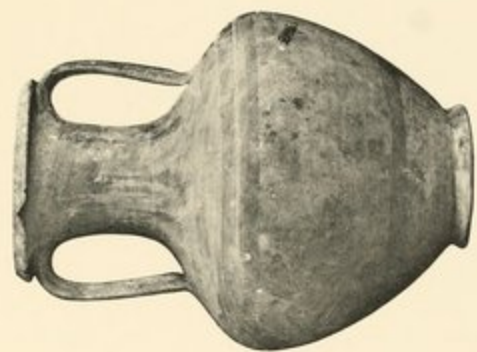
60



59

Urne cinerarie.





63



62



61

Urne cinerarie.





64

Ρυχis.



65

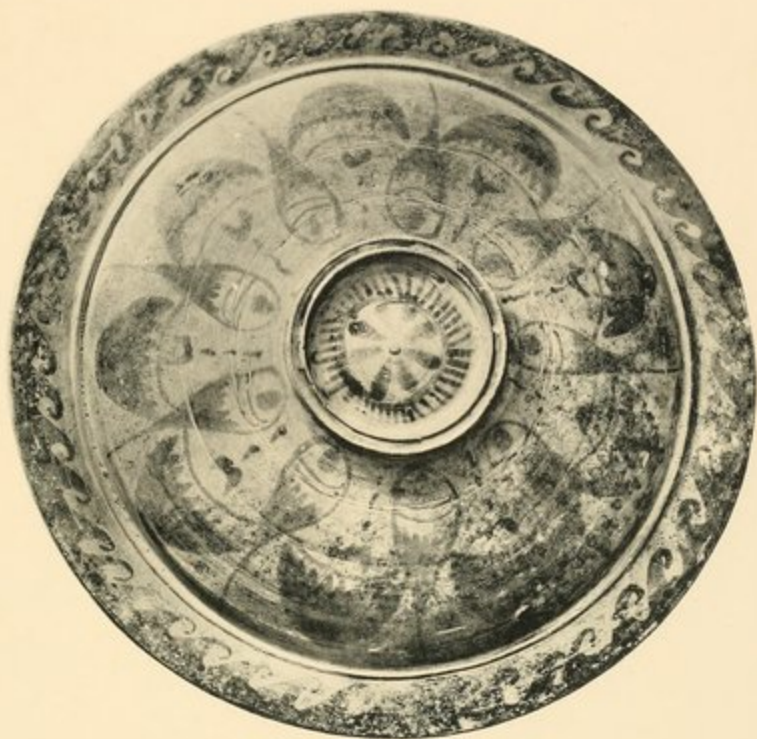


66

Vasi smaltati d'azzurro.







67. Pyxis (Coperchio)



68



69



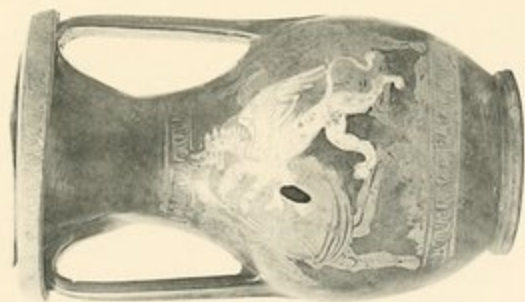
70

Lechiti.





72



71

Peliche.





73

Feliche.

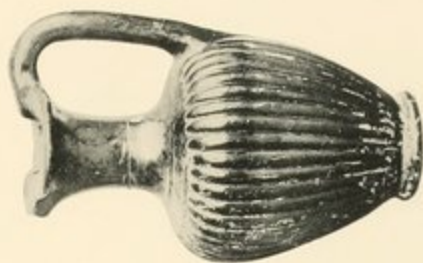


74





78



83



77



82



76



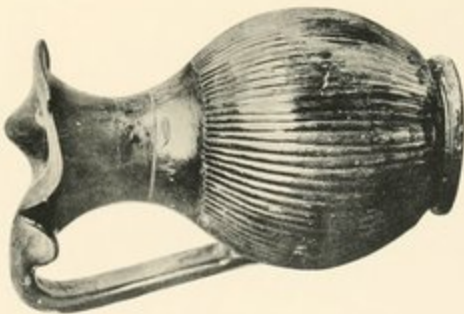
81



80



75



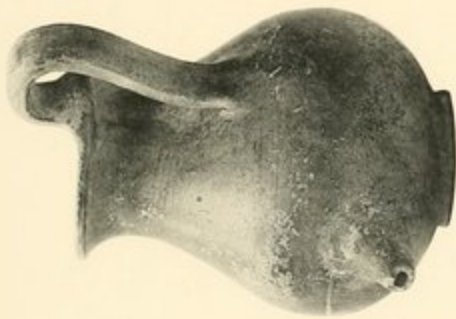
79







84



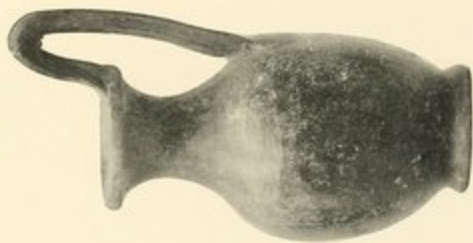
85



86



87



88



89





80



81



82



89



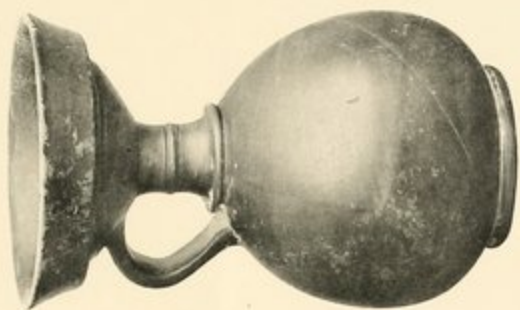
94



95

Terra cotta. — Vasi diversi.





98



97



96



100



101



99





102



103



104







105



108



107



106



109

Terra cotta. — Vasi diversi.





110



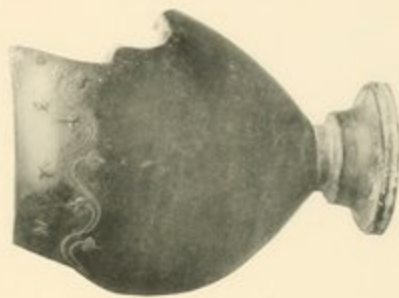
111



112



113



115



114

Terra cotta - Vasi diversi.





116



117



122



118



123



120



121



124



110





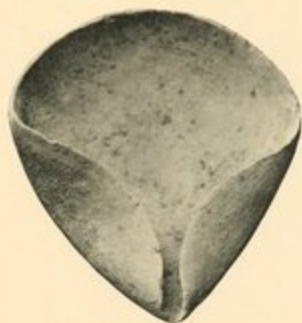
125



126



127



128



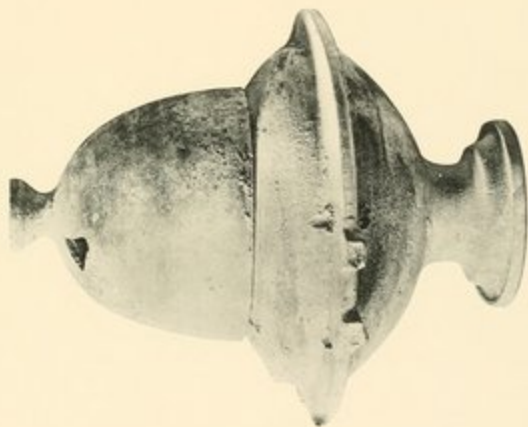
129



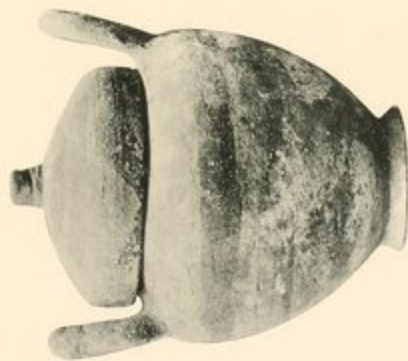




132



131



130

Terra cotta. - Vasi diversi.

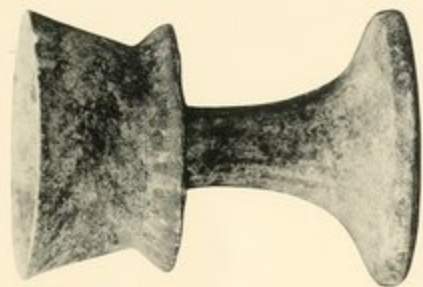




133



135



136



134



137



138





139



140



141



142



143



144





145



146



147



148



149



150



152



153



151



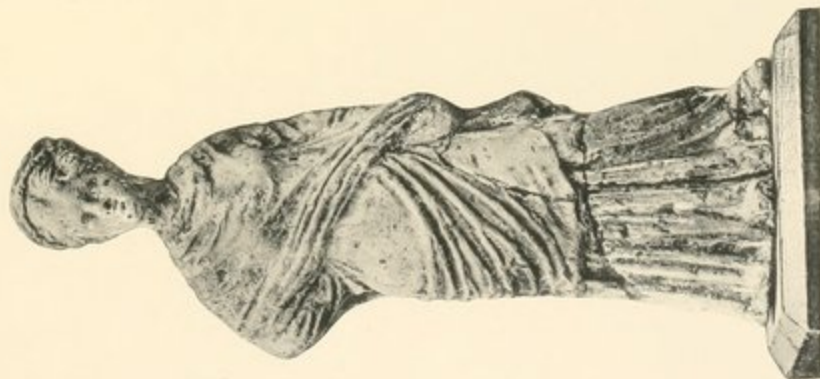




156



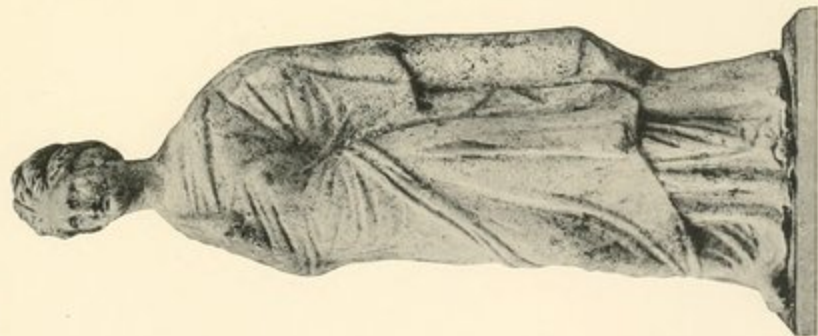
155



154

Terra cotta dipinta. — Figurine femminili in piedi.





157



158



159

Terra cotta dipinta. — Figurine femminili in piedi.





160



161



162



163



164



165





166



167



168



169



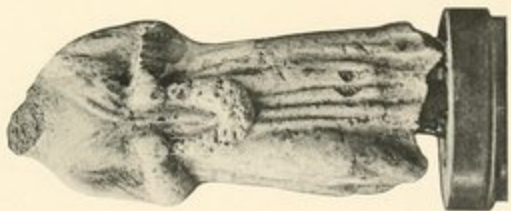
170



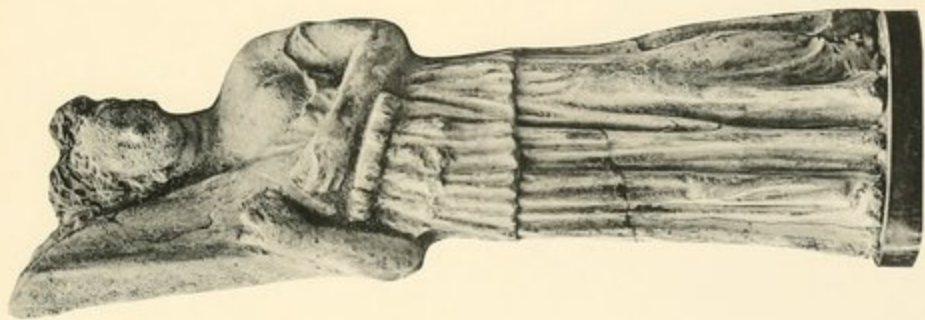
171







172



173



174





175



176



177



178





179



180



181



182





183



184



185



186

Terra cotta dipinta. — Statuee diverse.







187



188



189



192



190



191



193



194



195



196



197





198



199



200



201



202



203



204



205



206



207



208



209



210



211



212



213





214



215



216



217

- 463



218

= 462



219

342





220



221



222



223



224



225







226



227



228



229



230



231



232



233



234

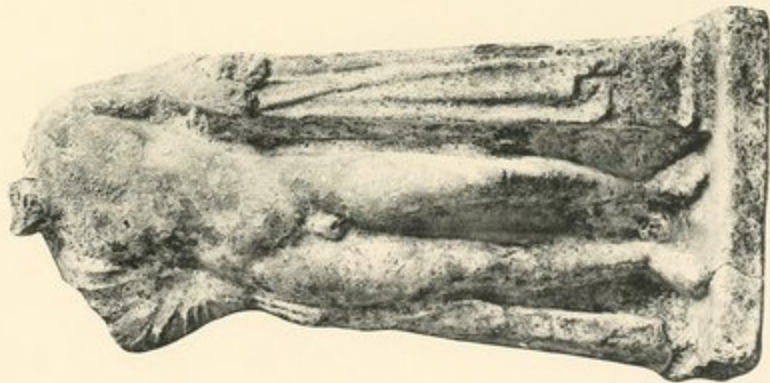


235



236





237

Terra cotta dipinta. — Divinità (?)



238

Gesso dipinto. — Ercole. — Dionysos



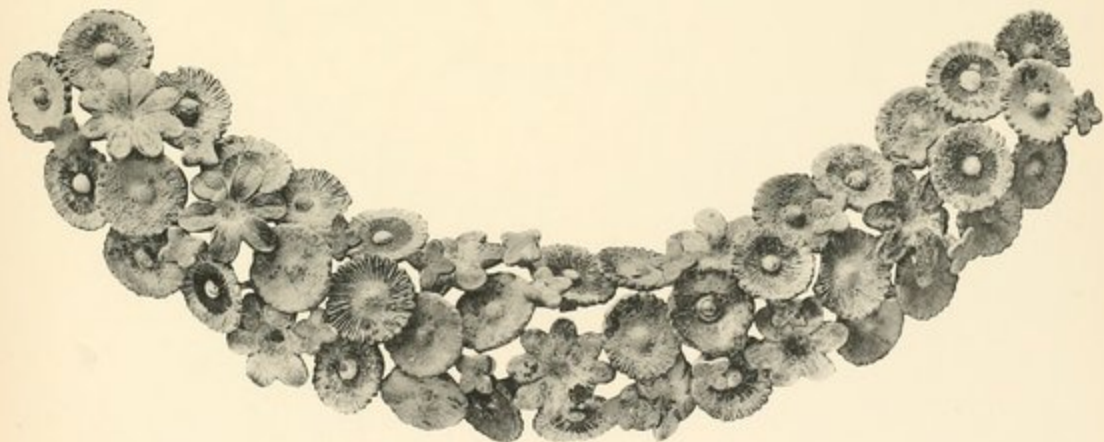
239

Terra cotta dipinta. — Ermafrodito.





240



241





242



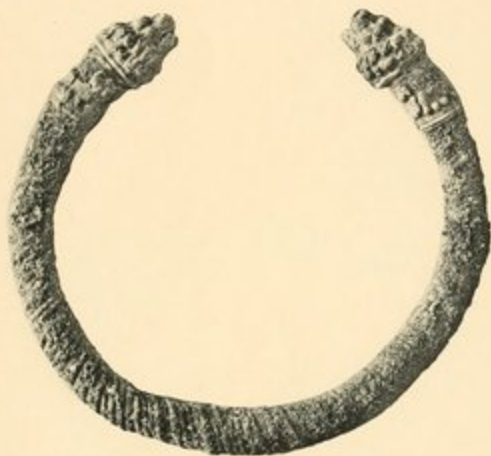
243



244



245



246



247



248



249







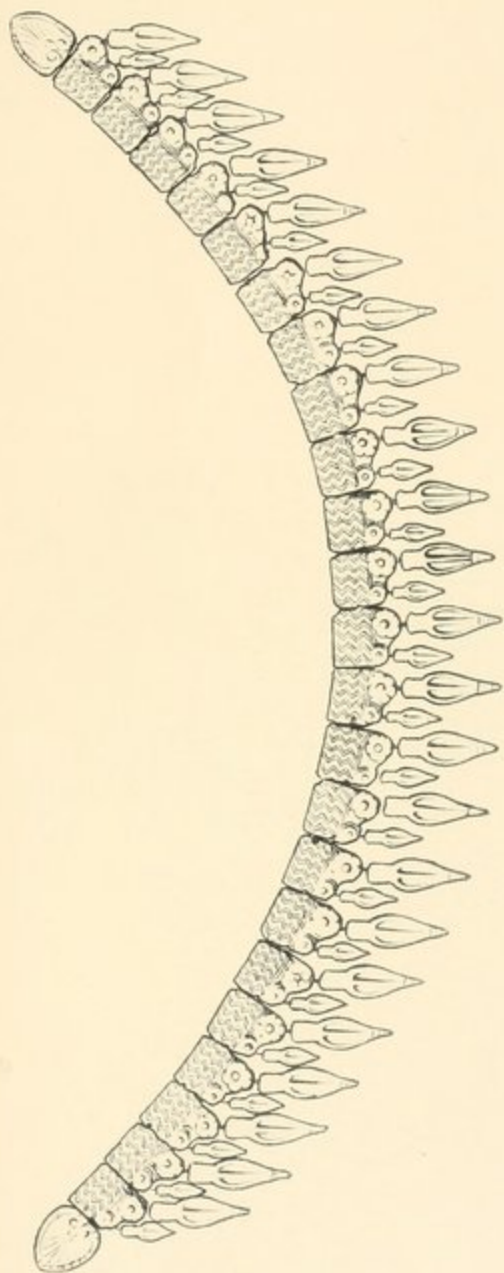
250 - 251



252 - 253 - 254 - 255

Terra cotta dorata. - Medaglioni e pendenti.

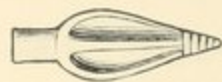




255 a



b



c



d

Terra cotta dorata. — Collana.





256



257



258 - 259 - 260 - 261 - 262 - 263 - 264



265



266





267



268



269



270



271



272



273



274







275



276



277



278



279



280





281



282



286



283



285



284



287



288



291



289



290



292























