

NYU IFA LIBRARY



3 1162 04538750 4



The
McAfee
Library
of Ancient
Art



NEW YORK UNIVERSITY LIBRARIES
INSTITUTE OF FINE ARTS

CATALOGUE GÉNÉRAL
DES
ANTIQUITÉS ÉGYPTIENNES.
(MUSÉE D'ALEXANDRIE).

LA NECROPOLI DI SCIATBI

SERVICE DES ANTIQUITÉS DE L'ÉGYPTE

CATALOGUE GÉNÉRAL

DES

ANTIQUITÉS ÉGYPTIENNES

(MUSÉE D'ALEXANDRIE)

N^{OS} 1 - 624

LA NECROPOLI DI SCIATBI

PER EVARISTO BRECCIA

VOLUME SECONDO

(TAVOLE)



LE CAIRE

IMPRIMERIE DE L'INSTITUT FRANÇAIS

D'ARCHÉOLOGIE ORIENTALE

1912

Fine Arts

+

DT

57

• A3

.B8n

t.1

INDICE DELLE TAVOLE⁽¹⁾.

TAVOLE.

- A. Pianta generale della necropoli (parte scavata).
 I. Pianta del sotterraneo A.
 II. Veduta prospettica della parete settentrionale del vestibolo *d* (Sotterraneo A). — Sezione d'una parte della medesima parete.
 III. Veduta prospettica d'una delle pareti lunghe nell'ambiente *g* (Sotterraneo A).
 IV. Facciata d'ingresso alla camera sepolcrale *g'* (Sotterraneo A).
 V. Cline-sarcofago. Camera sepolcrale *g'*: la porta veduta dall'interno.
 VI. 1. Monumenti sopra terra.
 2. Monumenti sopra terra. Atrio del sotterraneo A.
 VIII. 3. Sotterraneo A: Vestibolo *g*, camera sepolcrale *g'*.
 IX. 4. " " : Interno della Camera sepolcrale *g'*.
 X. 5. " " : Veduta del portico *d*.
 XI. 6. " " : Particolare del portico *d*.
 XII. 7. " " : Parete occidentale dell'Atrio *f*.
 XIII. 8. " " : Parete settentrionale della camera *e*.
 XIV. 9. " " : Interno della camera *e*.
 XV. 10-12. " " : Cellette sepolcrali della camera *h*.
 XVI. 13-15. Monumenti e fosse; 16. Sotterraneo A, camera *e*.
 XVII. 17-18. Monumenti sepolcrali.
 XVIII. 19. Altare; 20. Sotterraneo A, vestibolo *g*.
 XIX. 21. Frontone di una celletta sepolcrale; 22. Sotterraneo B, nicchiette contenenti urne cinerarie.
 XX. 23. Stele a rilievo; 24. Stele di Μενέλας.
 XXI. 25-26. Stele a rilievo.
 XXII. 27. Stele dipinta di . . .] ξενος μακεδών.
 XXIII. La medesima a colori.
 XXIV. 28. Particolare del Mosaico di Pompei (Alessandro Magno); 29. Particolare della stele di . . .] ξενος μακεδών.
 XXV. 30. Stele sepolcrale dipinta.
 XXVI. La medesima a colori.

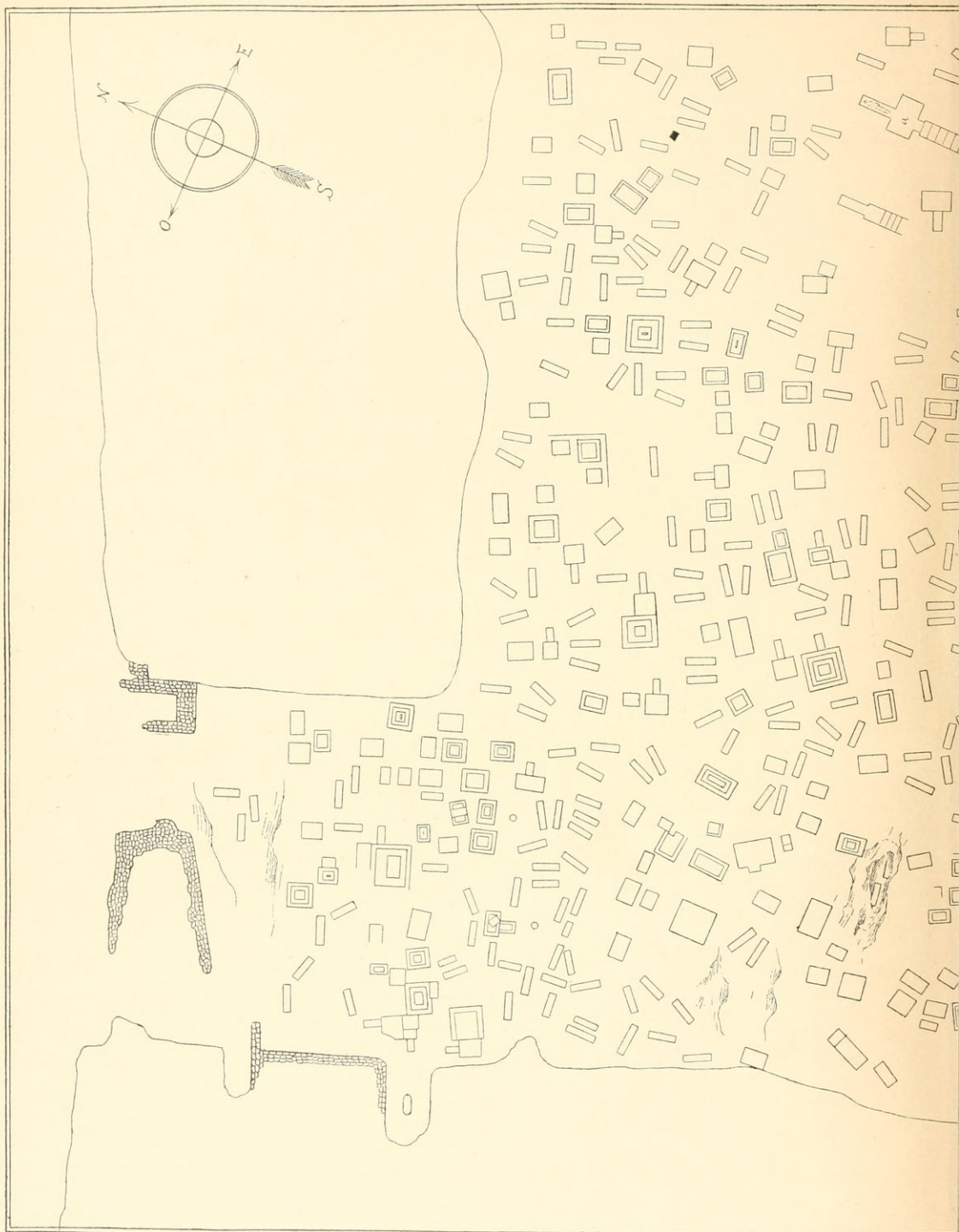
⁽¹⁾ Tutti i disegni e gli acquerelli sono opera del prof. M. Bartocci, disegnatore del Museo Greco-Romano; la grandissima maggioranza delle fotografie sono dovute ai signori Reiser e Binder della ditta omonima, soltanto le figure 13-15 della Tav. XVI sono state tratte da negative eseguite dal signor C. Mamluk et la fig. 22 nella Tav. XIX, da una negativa del Dott. A. Rietti.

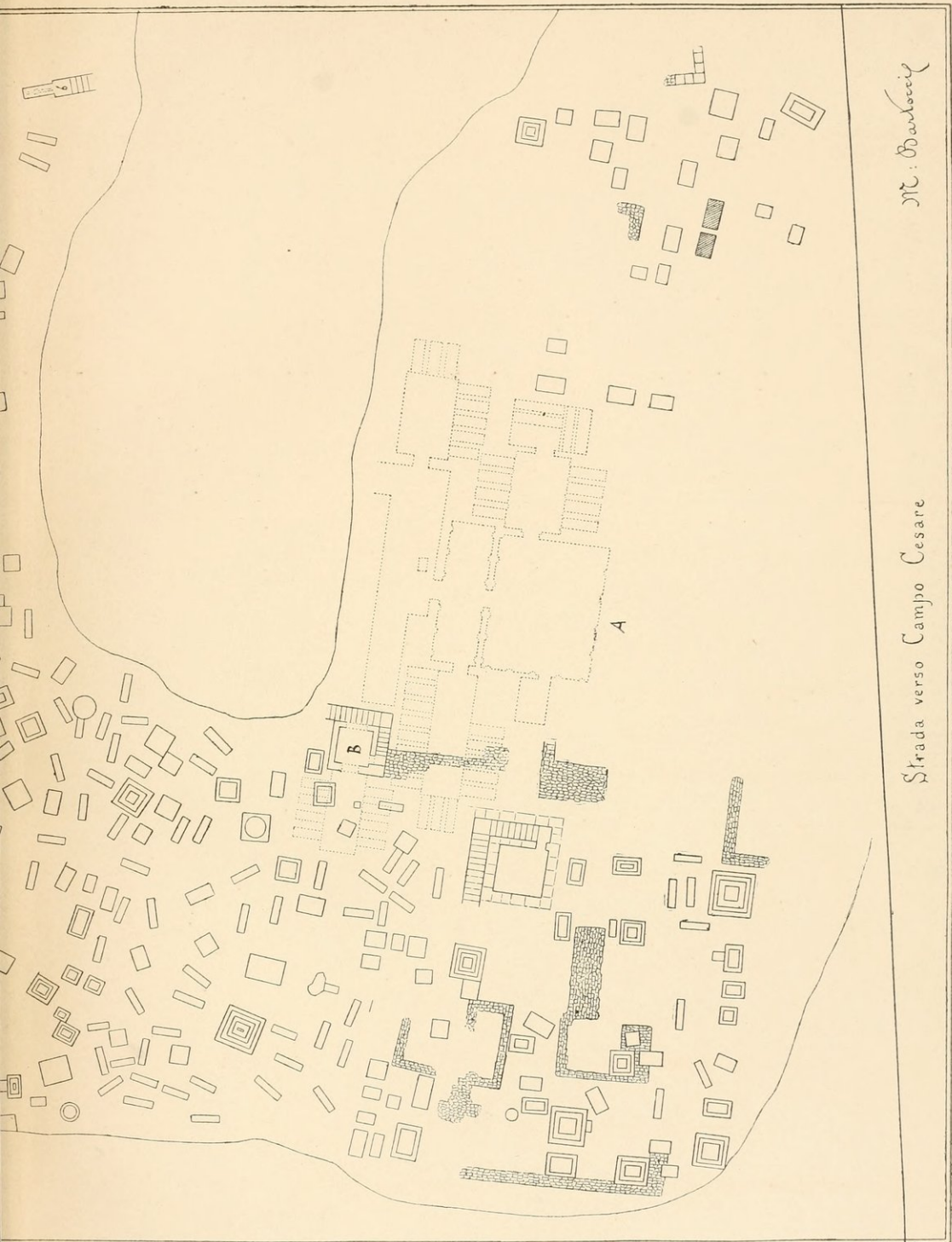
TAVOLE.

- XXVII. 31. Stele dipinta di Πολύλοκος Ἰπποκίτου θεσσαλός.
- XXVIII. 32. Stele dipinta di Θρασυμίδης.
- XXIX. 33. Stele dipinta.
- XXX. 34. Stele dipinta per Ἰσοδώρα κυρηναίη.
- XXXI. La medesima a colori.
- XXXII. 35-36. Stele dipinte.
- XXXIII. 37-38. Stele dipinte.
- XXXIII*. Stele dipinta (riproduzione a colori).
- XXXIV. 39-41. (Calcere e terra cotta) Sirene.
- XXXV. 42-43. Urne cinerarie (Terra cotta).
- XXXVI. 44-45. " " "
- XXXVII. 46-47. " " "
- XXXVIII. 48-49. " " "
- XXXIX. 50-51. " " "
- XL. 52-53. " " "
- XLI. 54-56. " " "
- XLII. 57-58. " " "
- XLIII. 59-60. " " "
- XLIV. 61-63. " " "
- XLV. 64. Pyxis; 65-66. Vasi smaltati d'azzurro (Terra cotta).
- XLVI. 67. Pyxis (coperchio); 68-70. Lechiti.
- XLVII. 71-72. Peliche (Terra cotta).
- XLVIII. 73-74. Peliche (Terra cotta).
- XLIX. 75-83. Vasi diversi (Terra cotta).
- L. 84-89. " " "
- LI. 90-95. " " "
- LII. 96-101. " " "
- LIII. 102-104. " " "
- LIV. 105-109. " " "
- LV. 110-115. " " "
- LVI. 116-124. " " "
- LVII. 125-129. " " "
- LVIII. 130-132. " " "
- LIX. 133-138. " " "
- LX. 139-144. Vasi diversi (Alabastro).
- LXI. 145-147. Vasi diversi (Alabastro); 148-151. (Vetro); 152. Osso; 153. Statuetta (Osso).
- LXII. 154-156. Figurine femminili in piedi (Terra cotta dipinta).
- LXIII. 157-159. " " " "
- LXIV. 160-165. " " " "

TAVOLE.

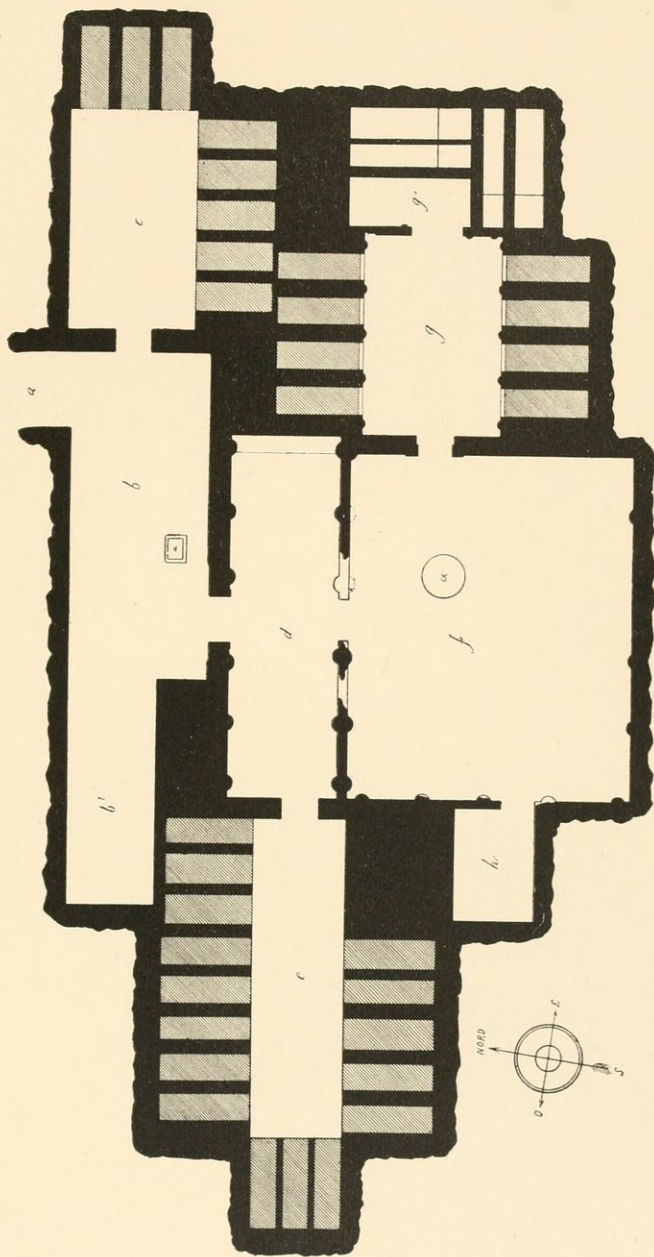
- LXV. 166-171. Figurine femminili in piedi (Terra cotta dipinta).
LXVI. 172. Suonatrice di trigono; 173 e 174. Portatrici di corone.
LXVII. 175-178. Figurine femminili in piedi (Terra cotta dipinta).
LXXVIII. 179-182. Figurine femminili sedute "
LXIX. 183-186. Statuine diverse "
LXX. 187-197. Figurine diverse "
LXXI. 198-213. Testine varie (Terra cotta dipinta).
LXXII. 214-219. Fanciulli "
LXXIII. 220-225. Fanciulli "
LXXIV. 226-236. Fanciulli-Maschere-Animali etc. (Terra cotta dipinta).
LXXV. 237. Divinità (?); 238. Ercole; 239. Ermafrodito "
LXXVI. 240-241. Corone di fiori "
LXXVII. 242-245. Fiori artificiali; 246-249. Braccialetti (Terra cotta e bronzo).
LXXVIII. 250-255. Medaglioni e pendenti (Terra cotta dorata).
LXXVIII^a. Collana (Terra cotta dorata).
LXXIX. 256-266. Teste di Medusa, Bucrani, Scudi (Stucco dorato).
LXXX. 267-274. Frammenti di vasi diversi (Terra cotta smaltata).
LXXXI. 275-276. Frammenti di vasi diversi (Terra cotta smaltata); 277-280. Frammenti di vasi
diversi (Tipo di Gnatia).
LXXXII. 281-292. Frammenti di vasi diversi (Tipo di Gnatia).



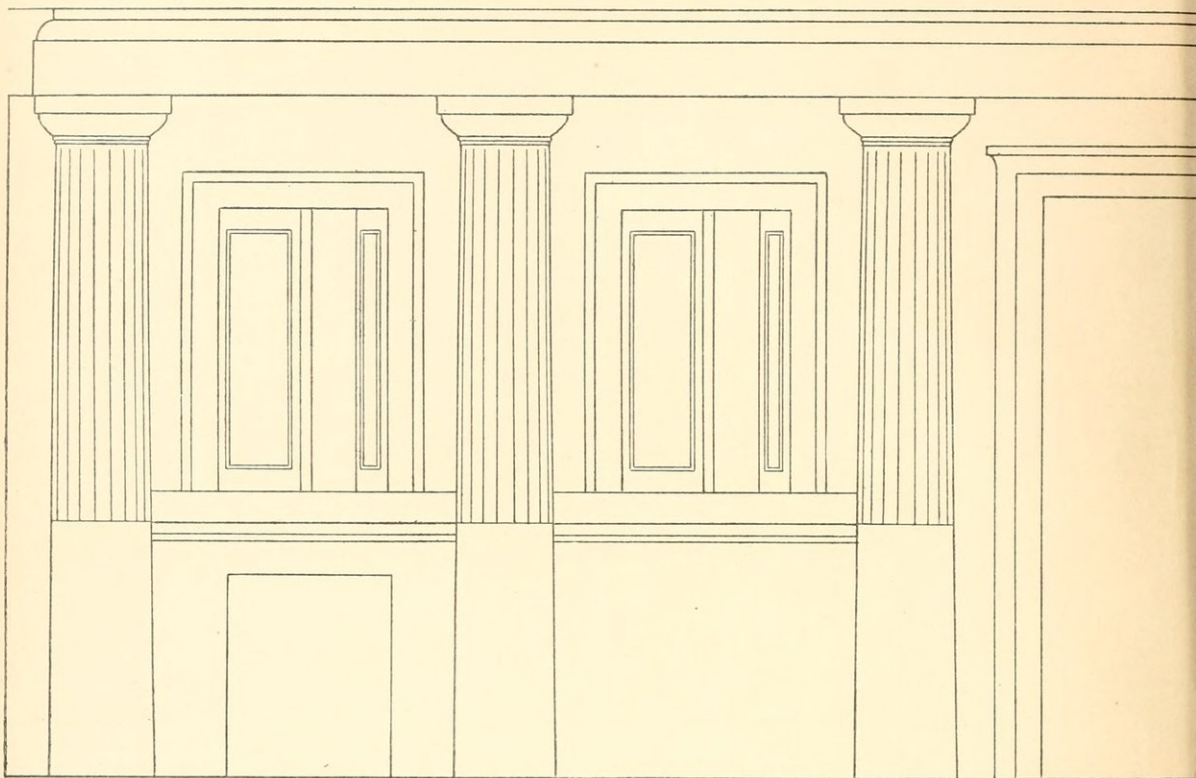


M. Barbocci

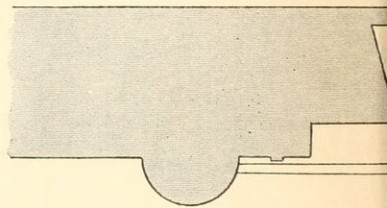
Strada verso Campo Cesare



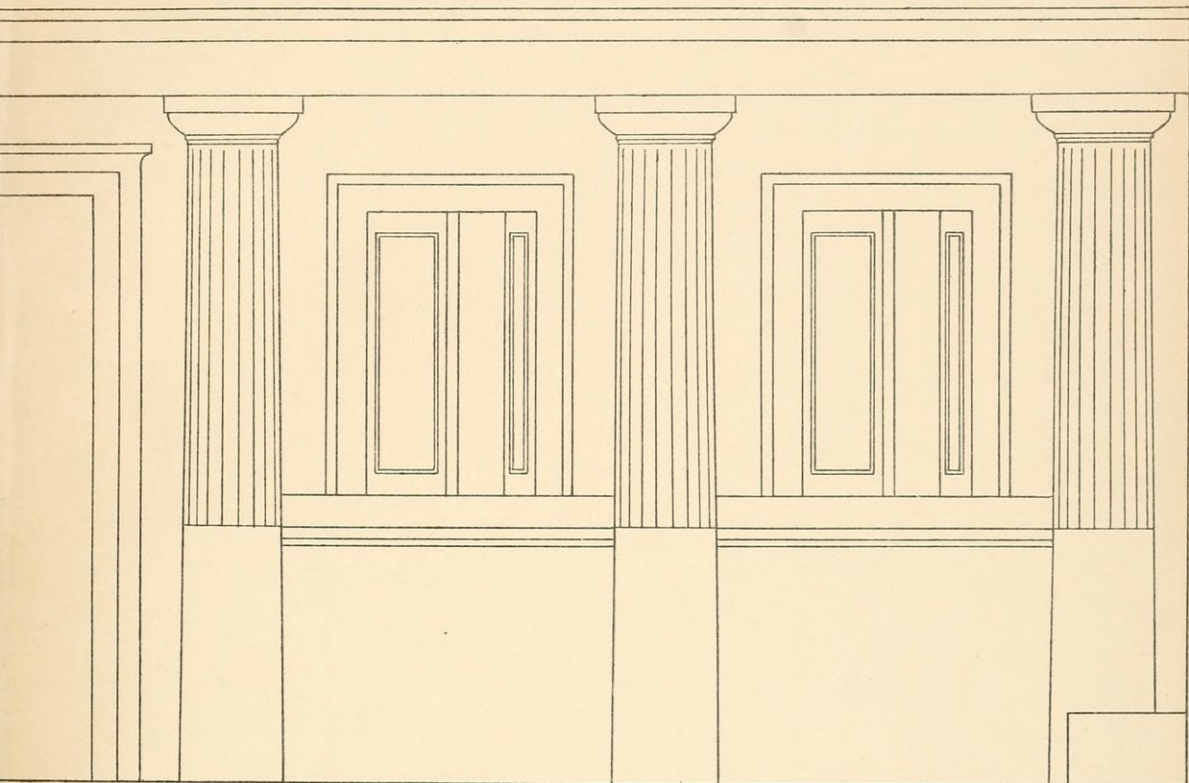
Pianta del Sotterraneo A.



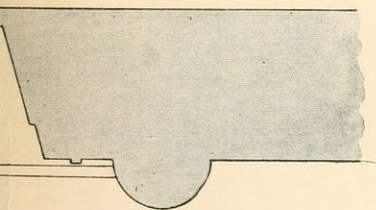
Veduta prospettica della parete sette



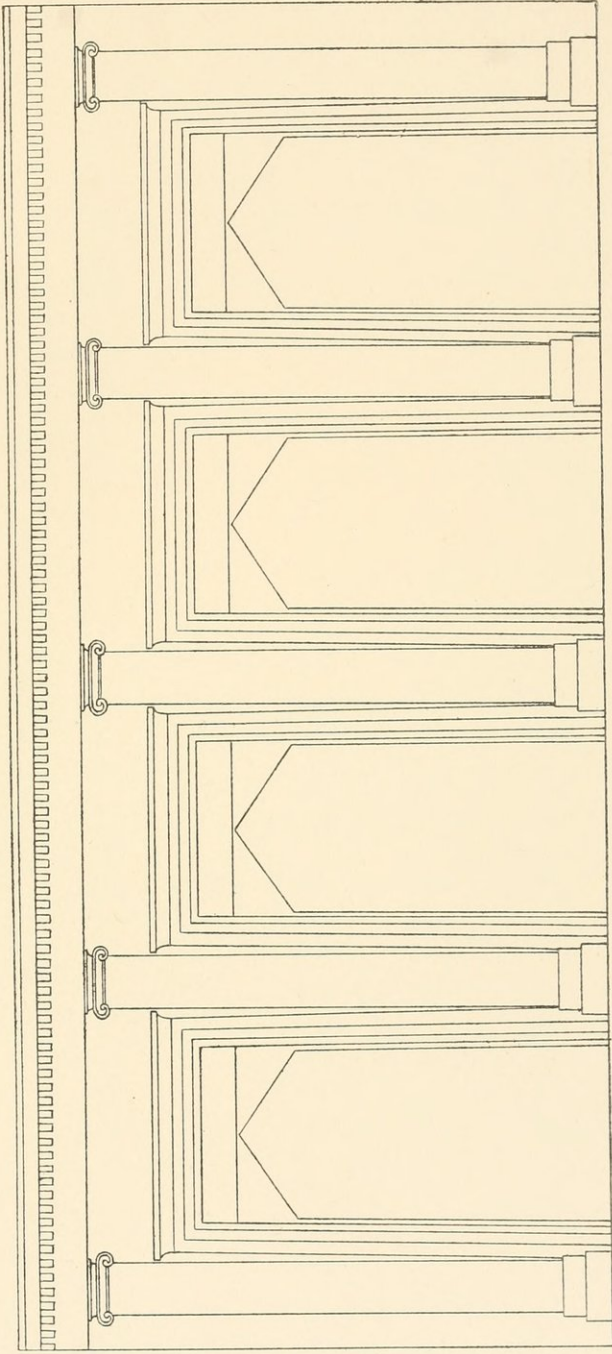
Sezione d'una part



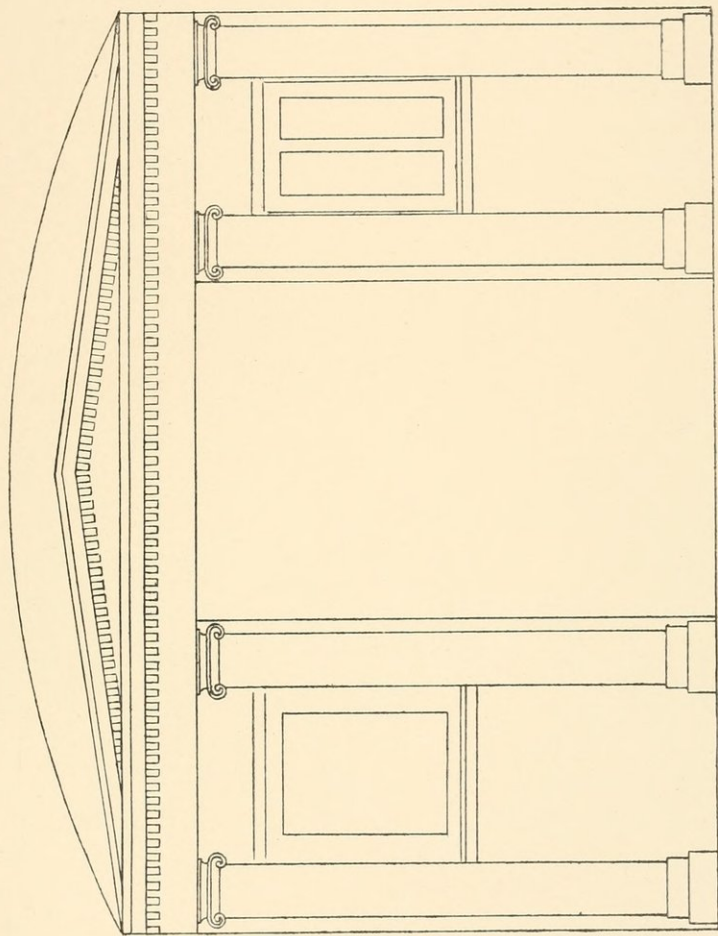
le del vestibolo *d* (Sotterraneo A).



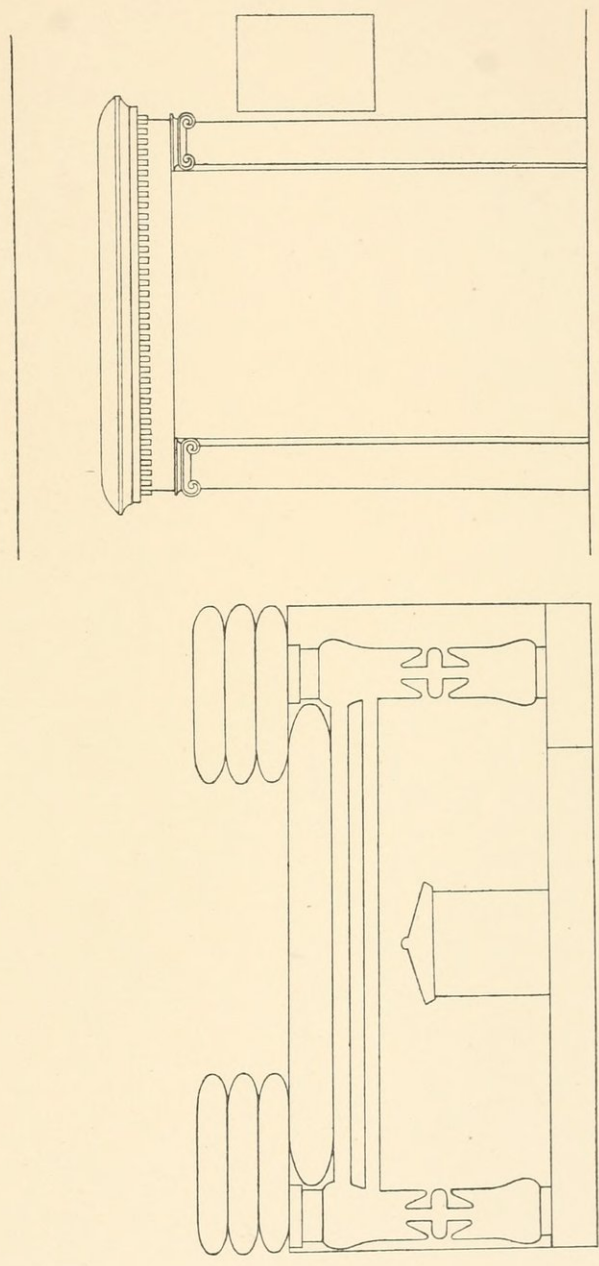
medesima parete.



Veduta prospettica d'una delle due pareti lunghe nell'ambiente *g* (Sotterraneo A.).

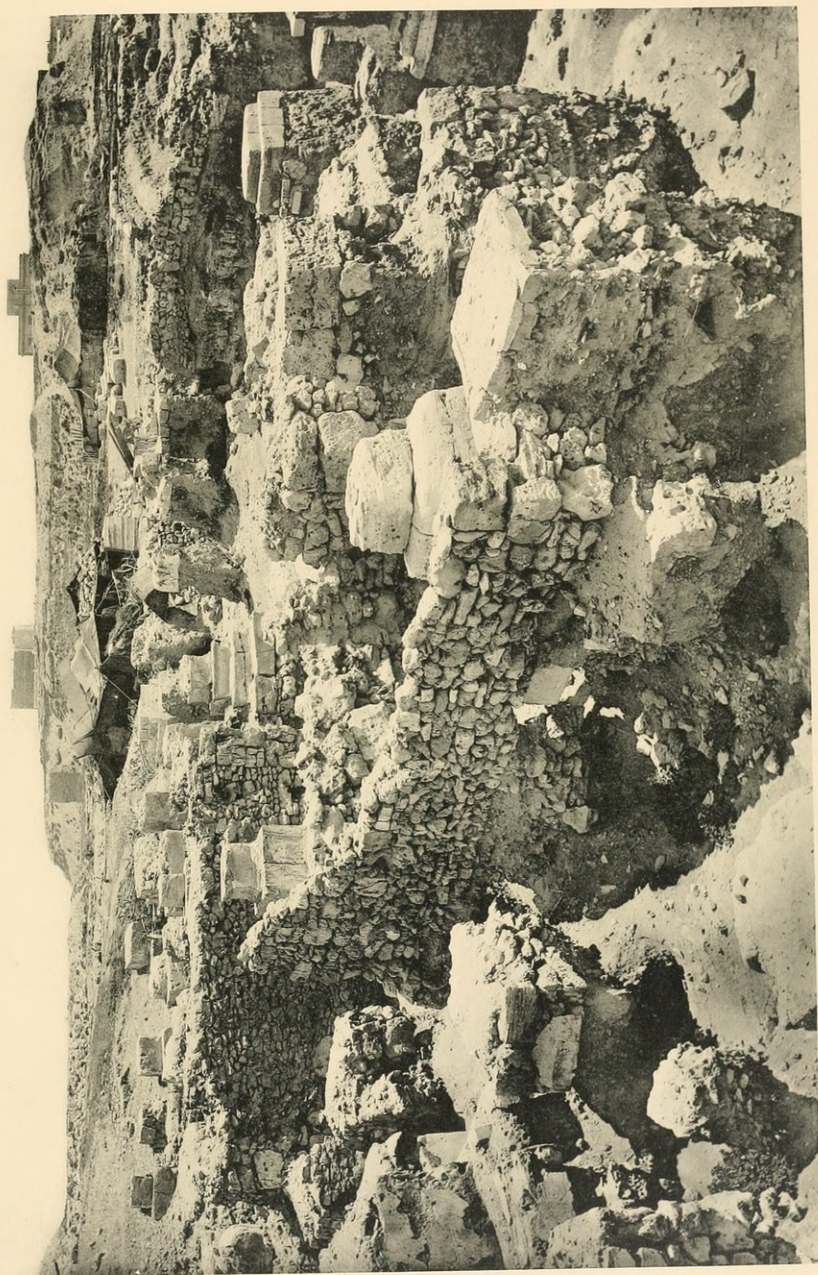


Facciata d'ingresso alla camera sepolcrale *g'* (Sotterraneo A.).



Cline-sarcofago.

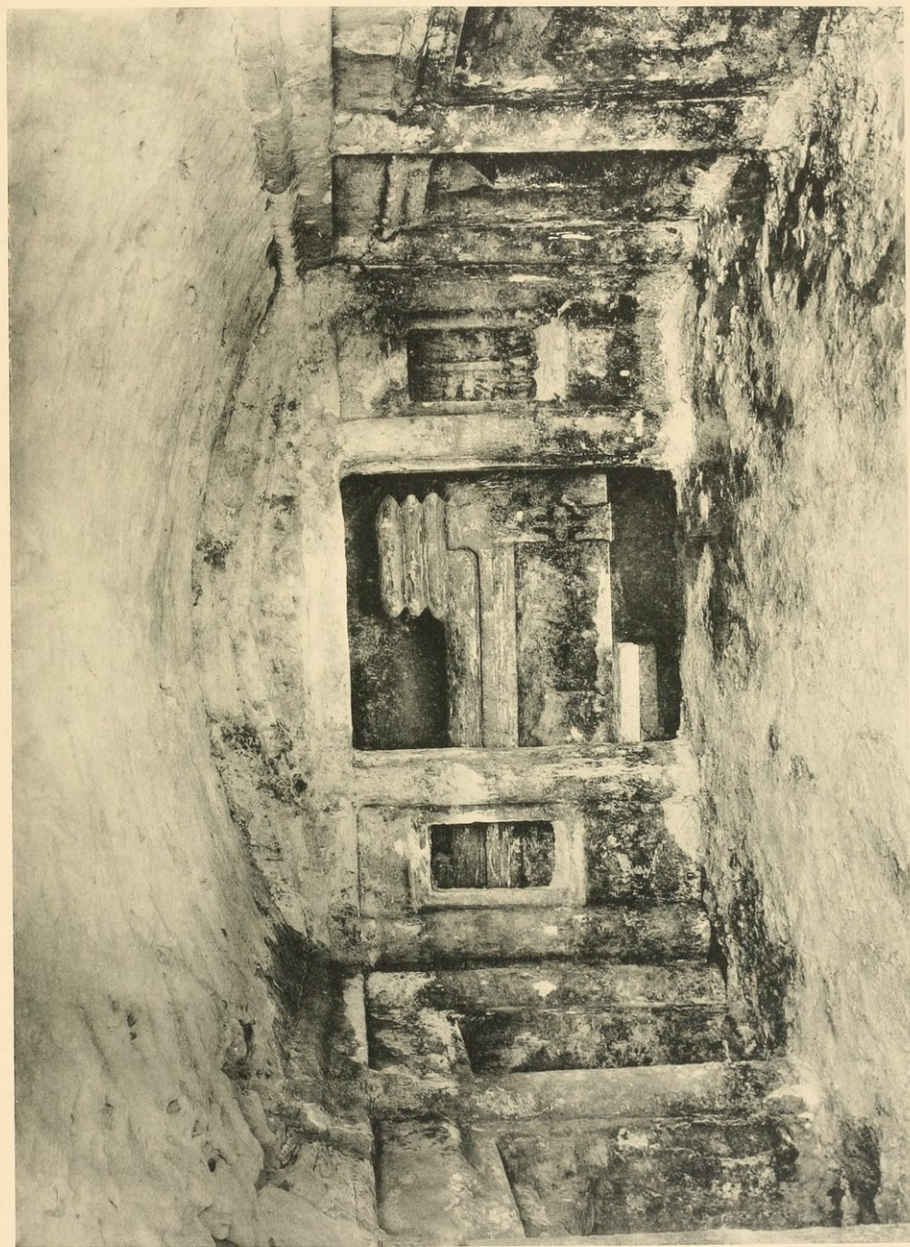
Camera sepolcrale g' : la porta veduta dall'interno.



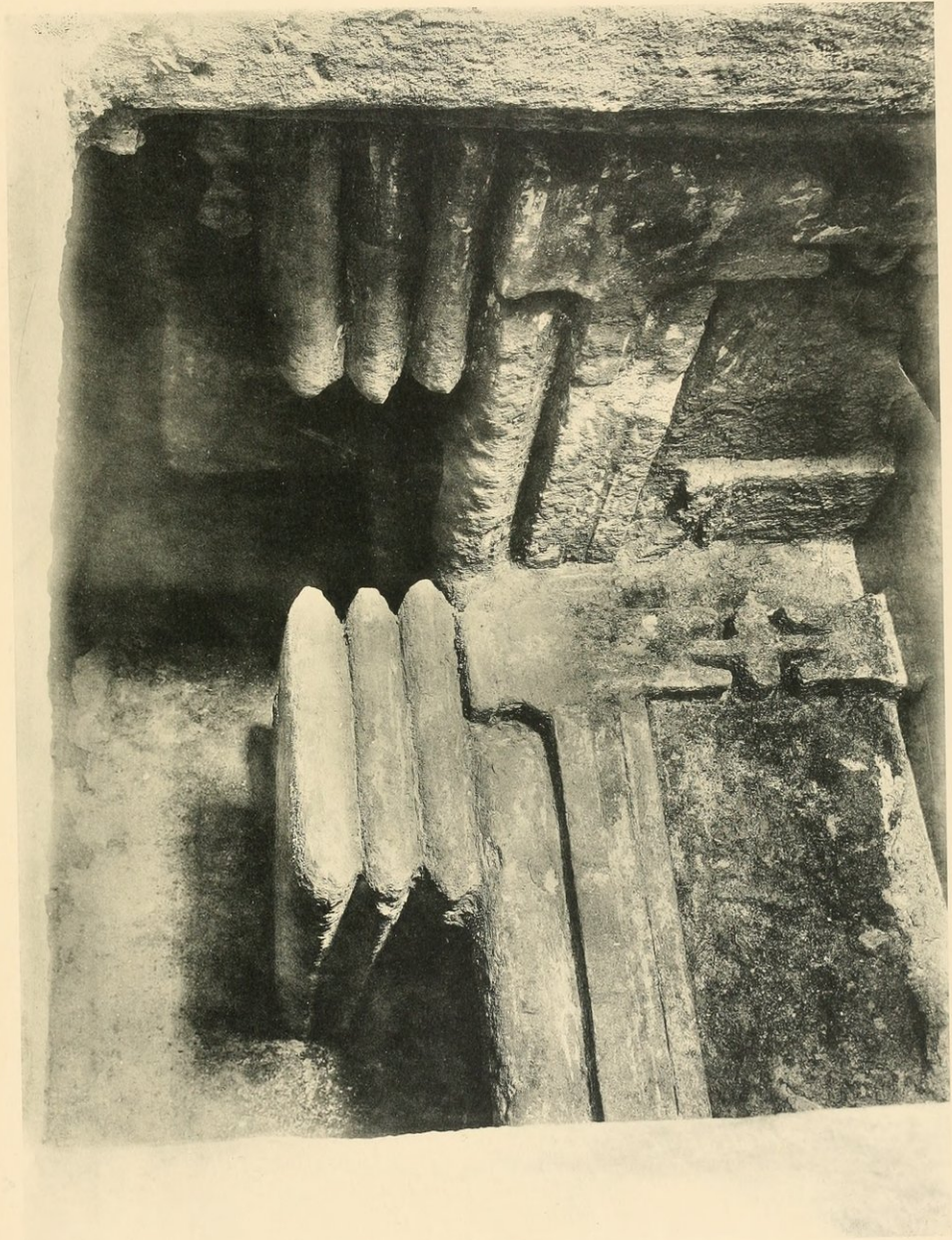
1. Necropoli di Siatbi. — Monumenti sopra terra.



2. Necropoli di Sclatibi. — X Atrio del sotterraneo A.



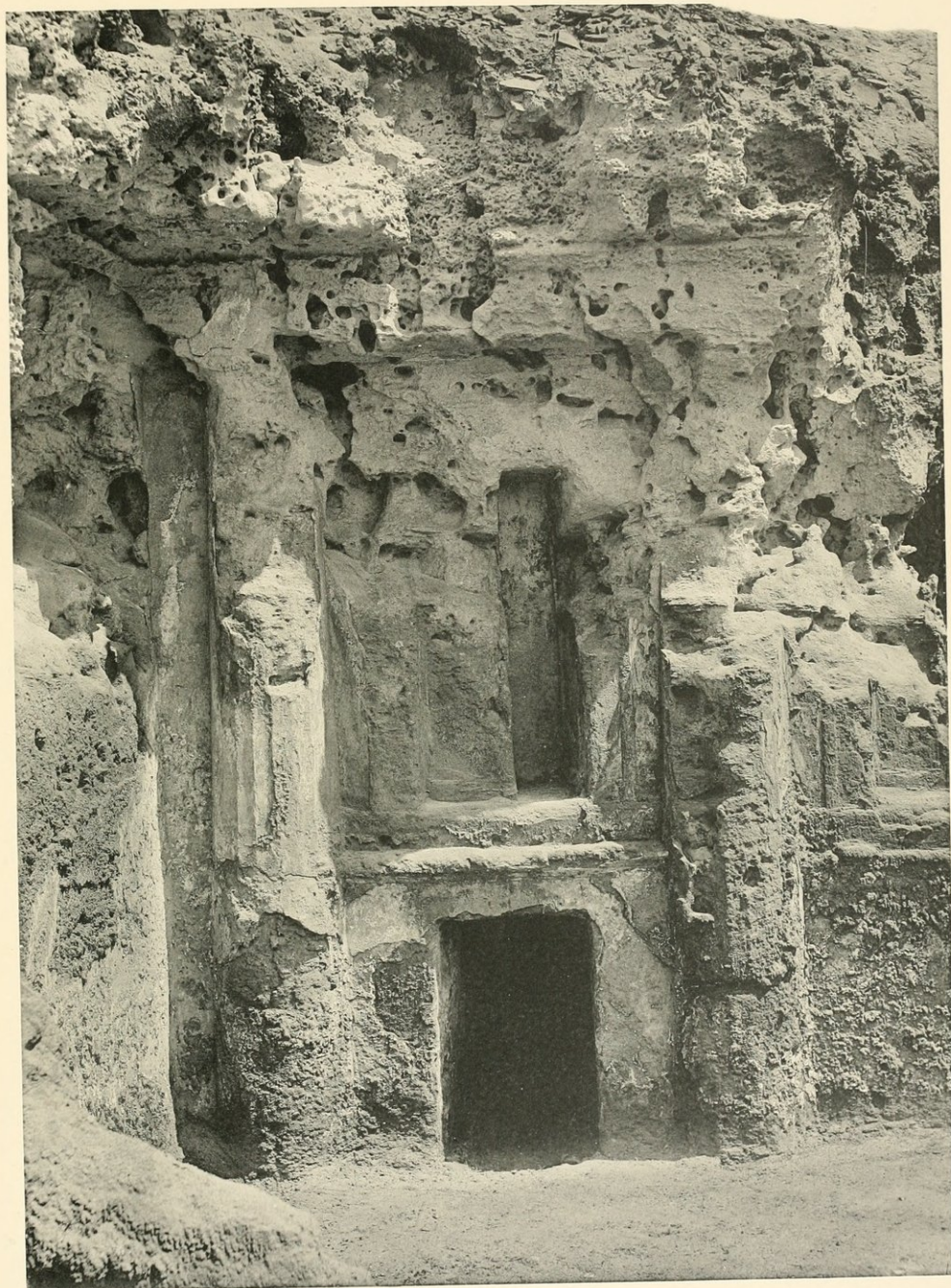
3. Sotterraneo A - Vestibolo g, camera sepolcrale g¹.



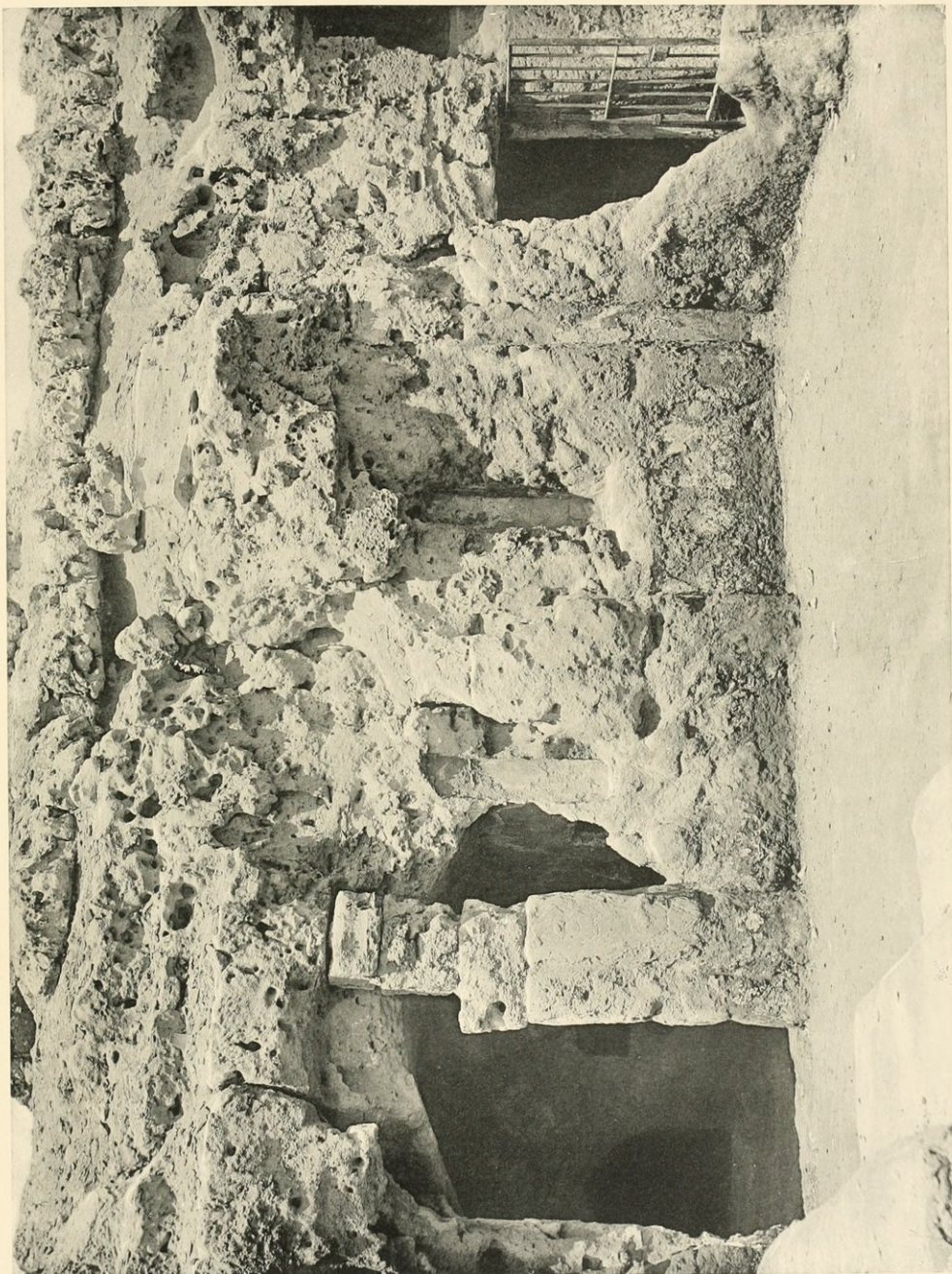
4. Sotterraneo A. - Interno della Camera sepolcrale g¹.



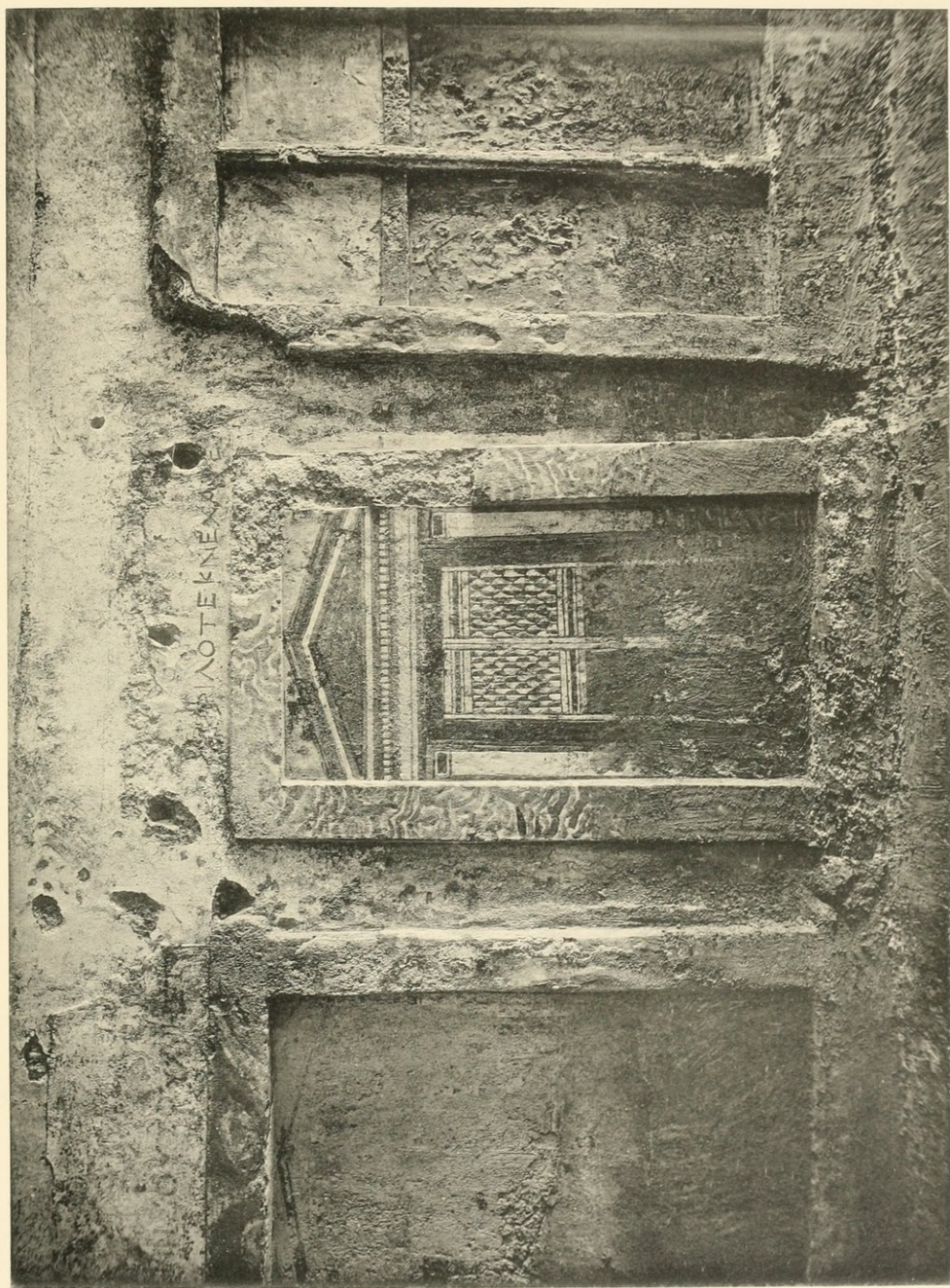
5. Sotterraneo A. — Veduta del portico d.



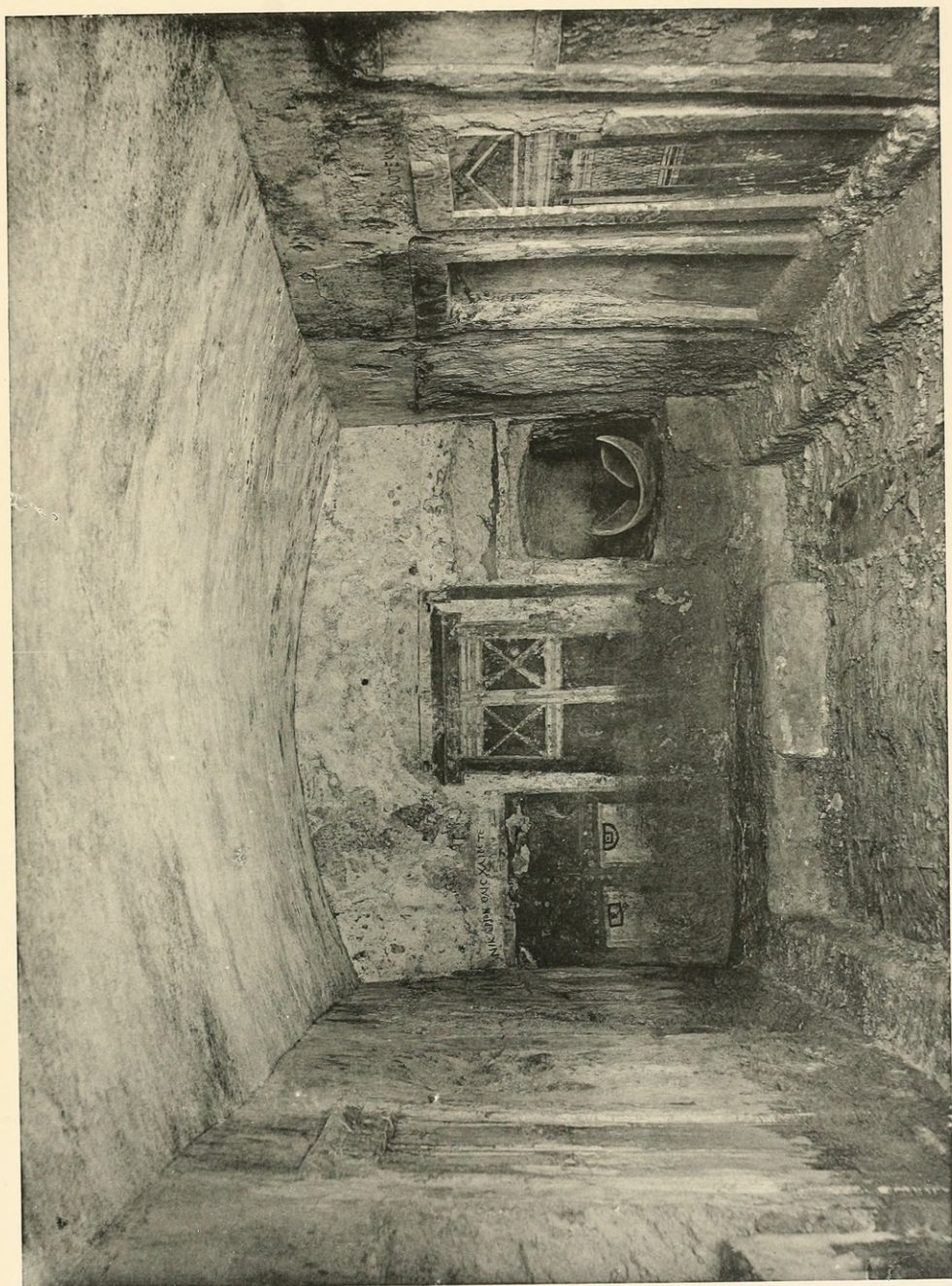
6. Sotterraneo A. — Particolare del portico d.



7. Sotterraneo A. — Parete occidentale dell' Atrio f.



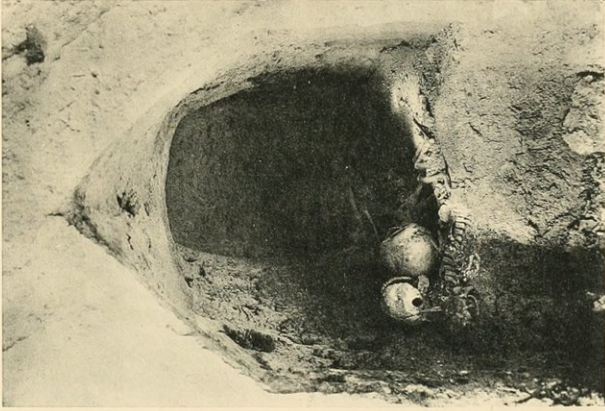
8. Sotterraneo A. - Parete settentrionale della camera e.



9. Sotterraneo A. — Interno della camera e.



10

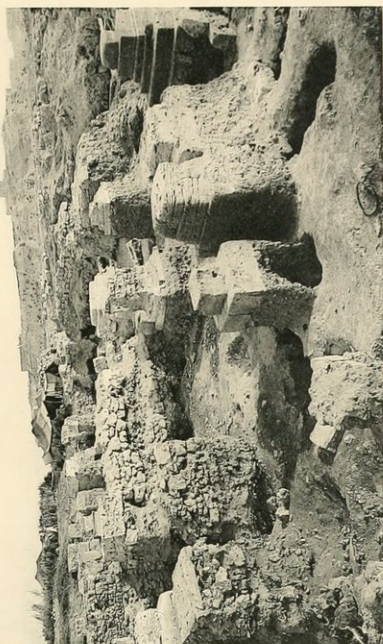


11

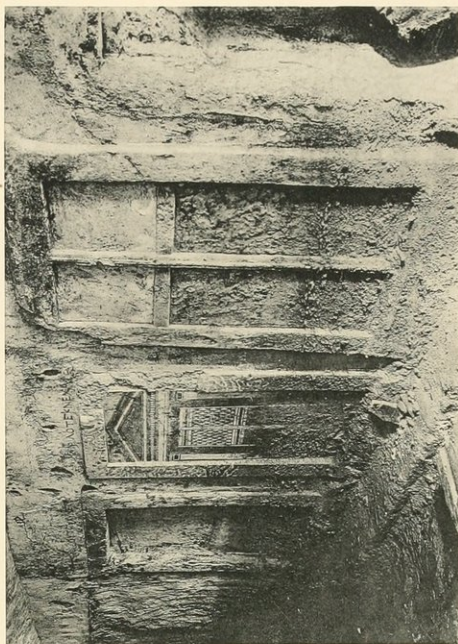


12

Sotterraneo A. — Cellette sepolcrali della camera h.



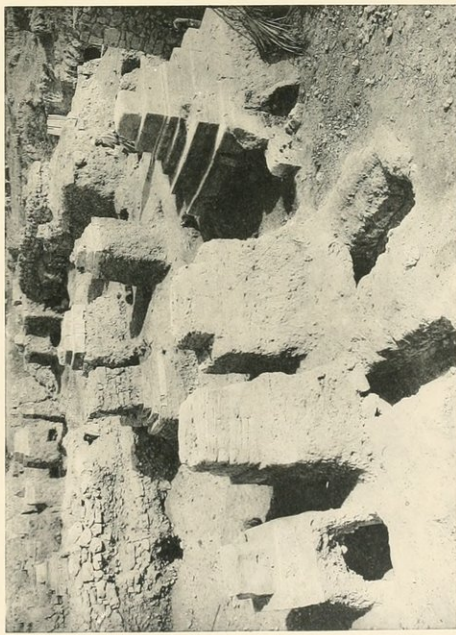
14



16



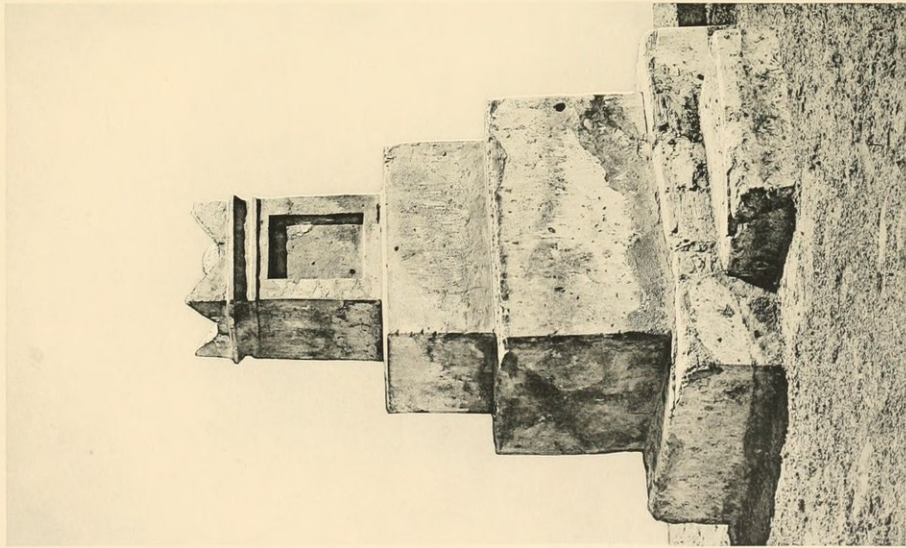
13



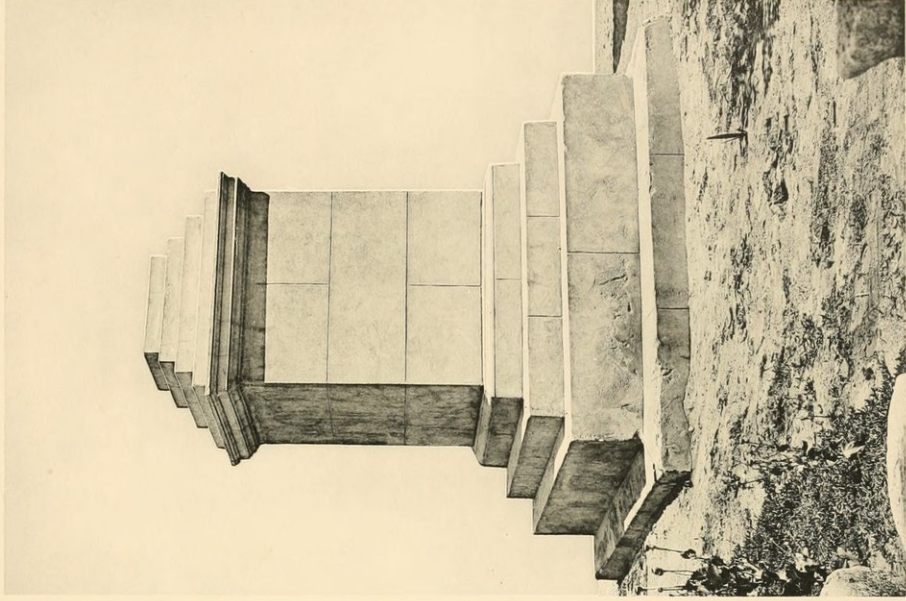
15

Monumenti e fosse.

Sotterraneo A, Camera e.



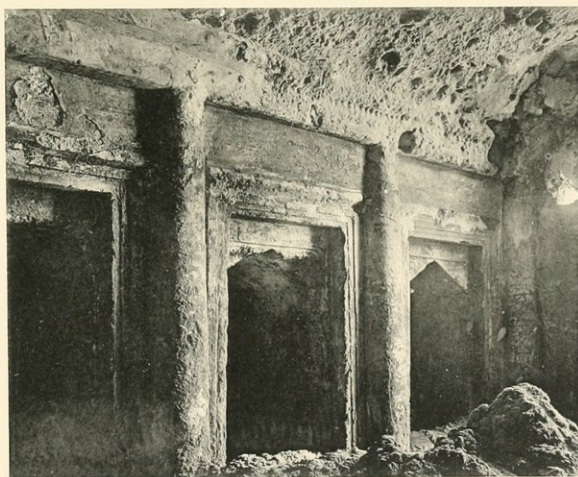
47

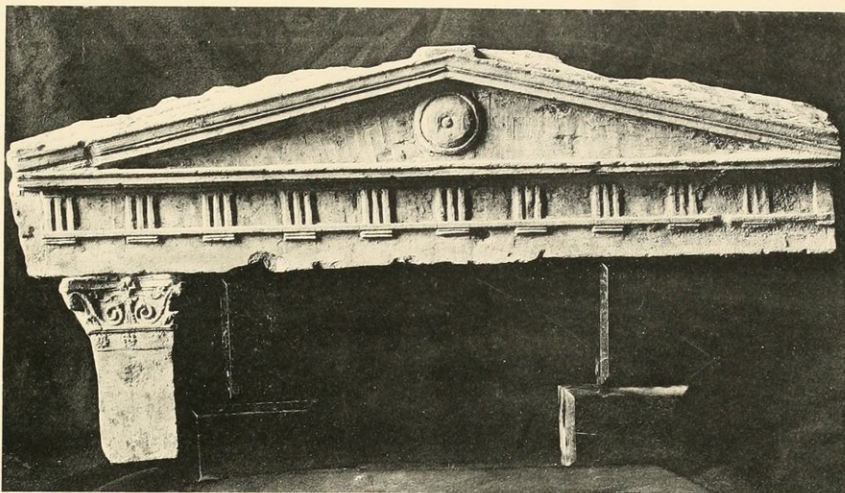


48



19. Altare.





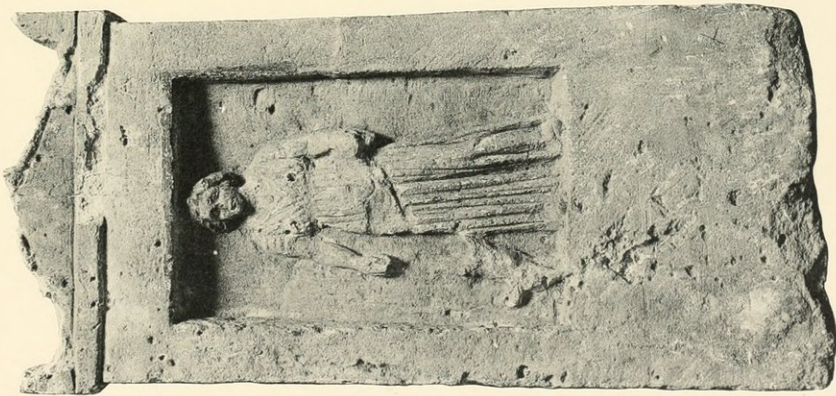
21

Frontone di una celletta sepolcrale.



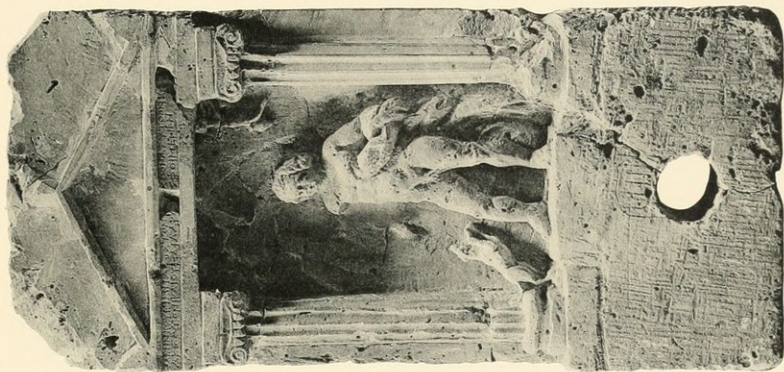
22

Sotterraneo B. — Nicchie contenenti urne cinerarie.



23

Stele a rilievo.



24

Stele di Mevvezç.



26



25

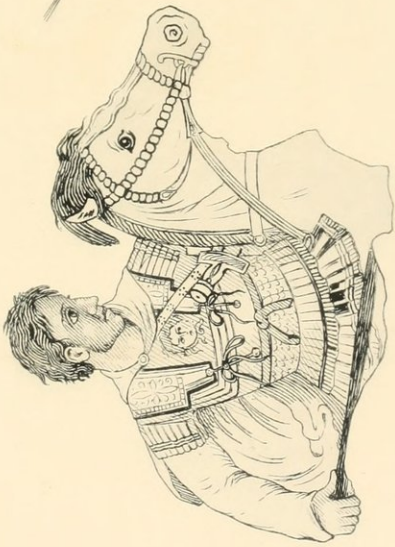
Stele a rilievo.



27

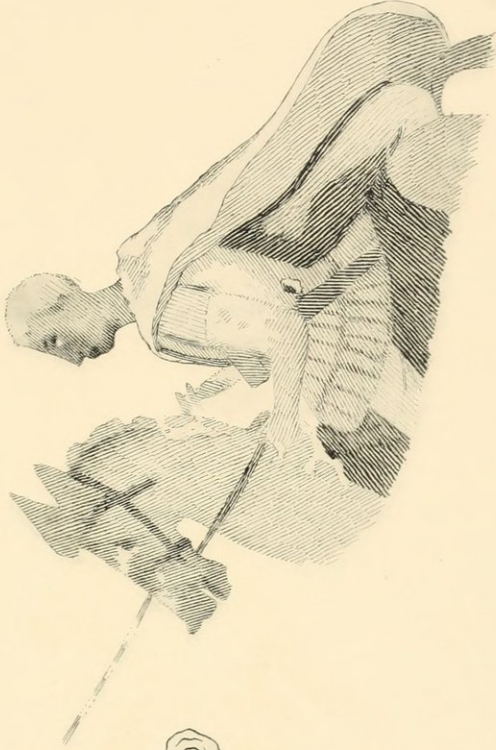
Stele dipinta di ... | ξενος μνησθών.





28

Particolare del Mosaico di Pompei (Alessandro Magno).



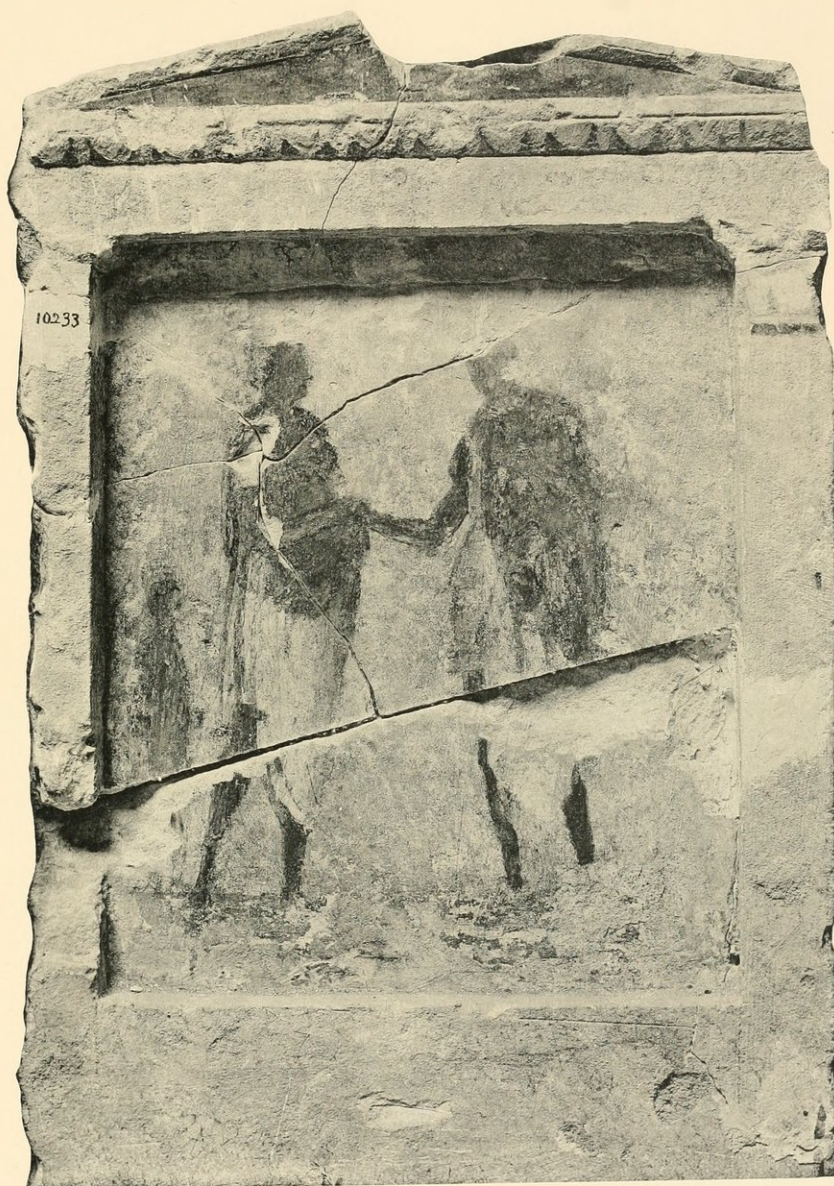
29

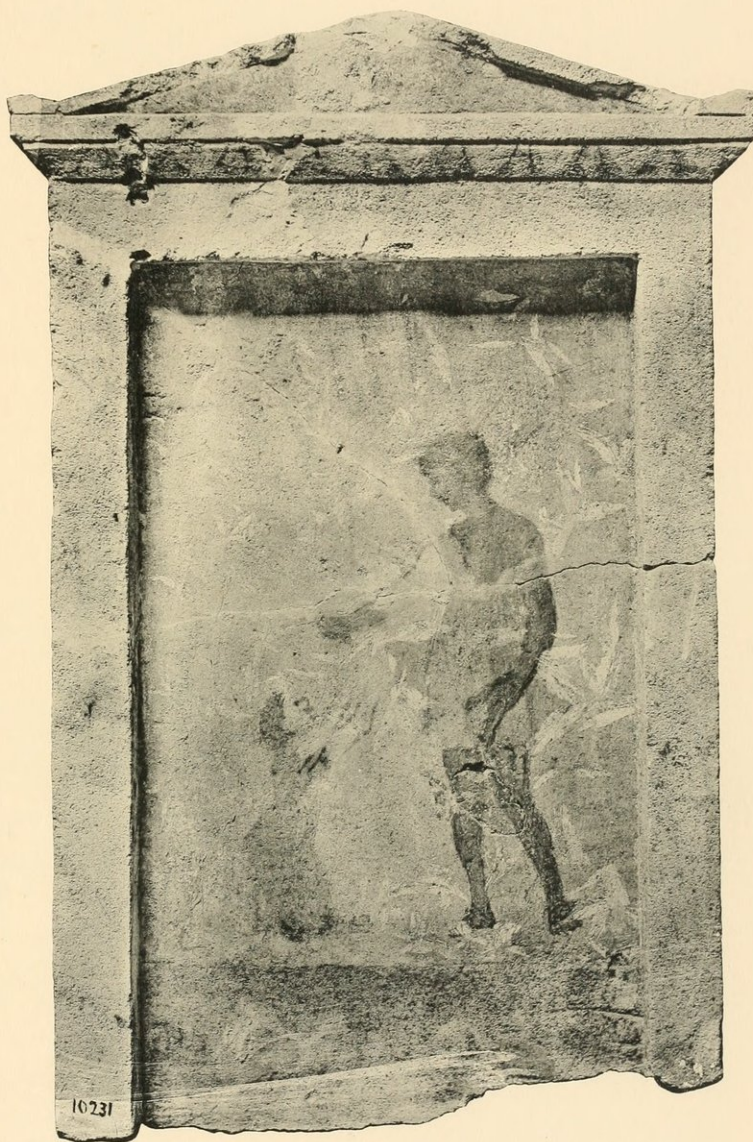
Particolare della Stele di ... | $\xi\acute{\iota}\nu\omicron\varsigma$ $\mu\alpha\lambda\acute{\iota}\sigma\tau\omicron\nu$.





M. Bartocci

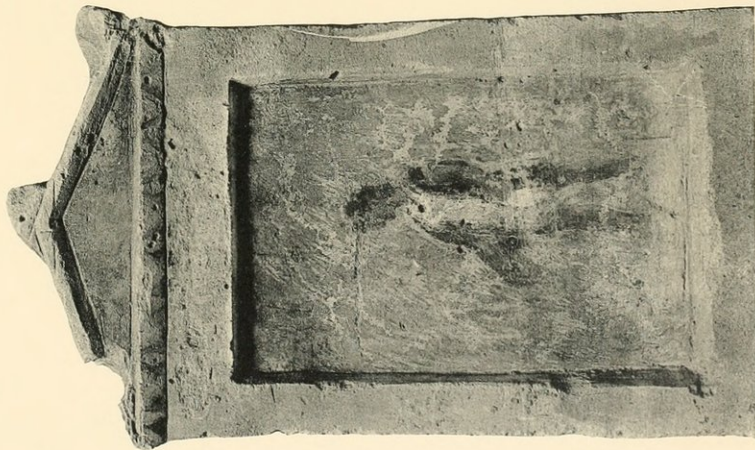




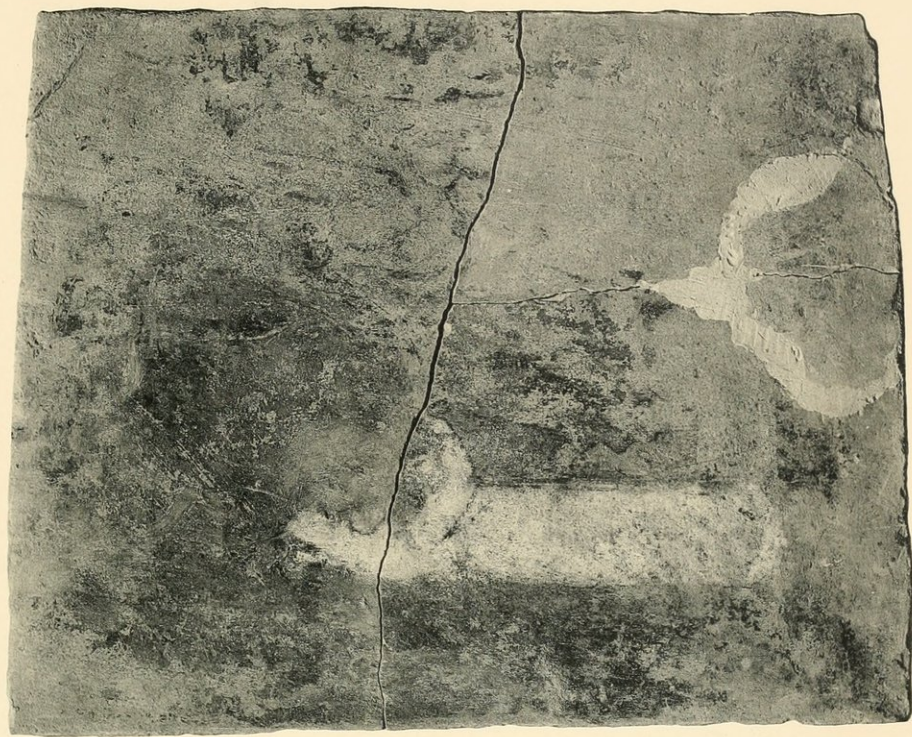








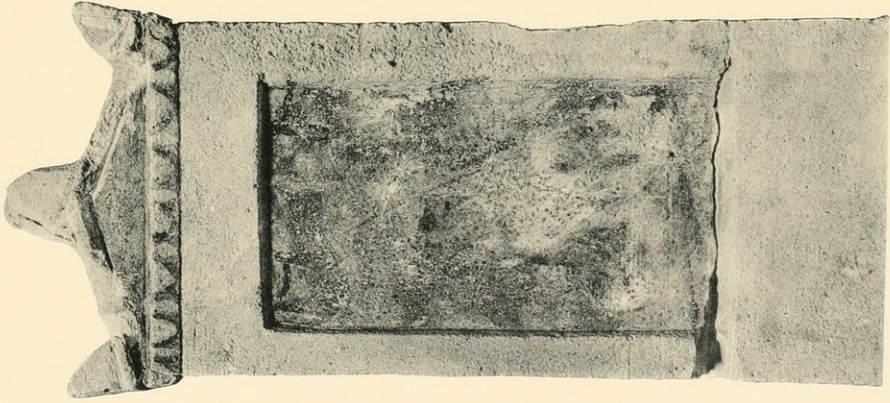
35



36

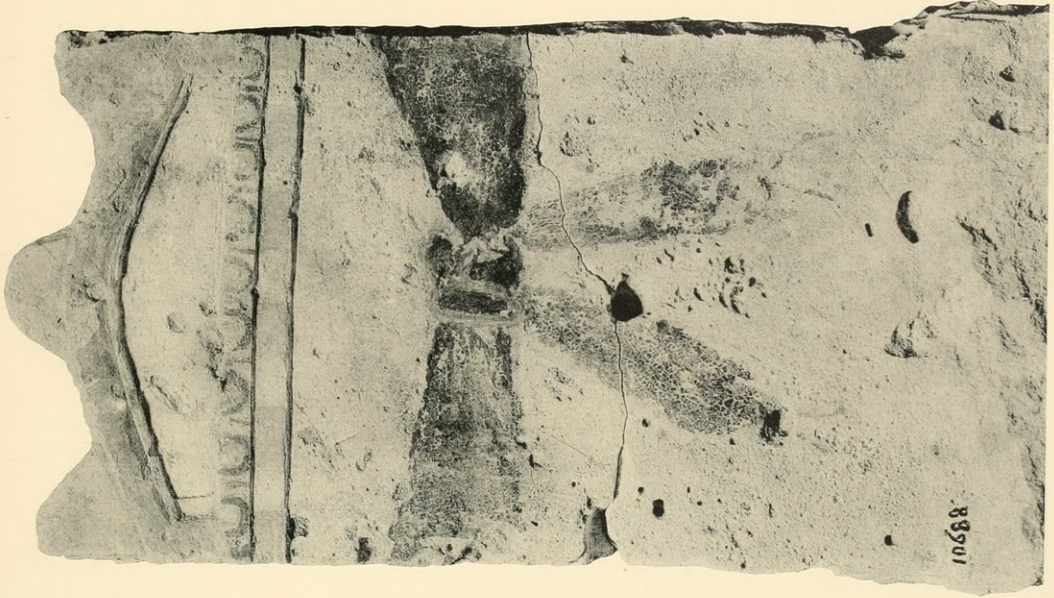
Stele dipinte.



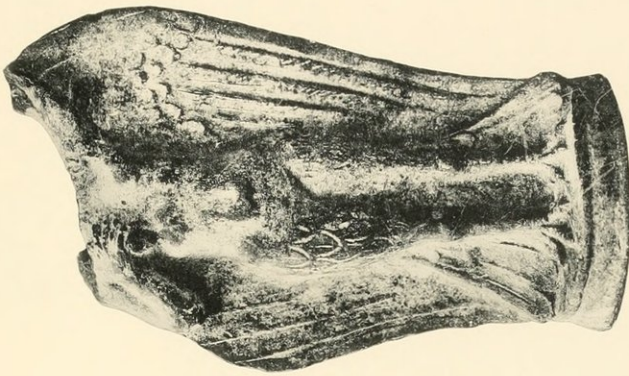


37

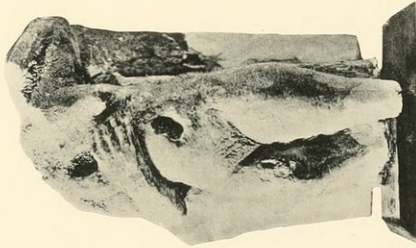
Stele dipinte.



38



41



40



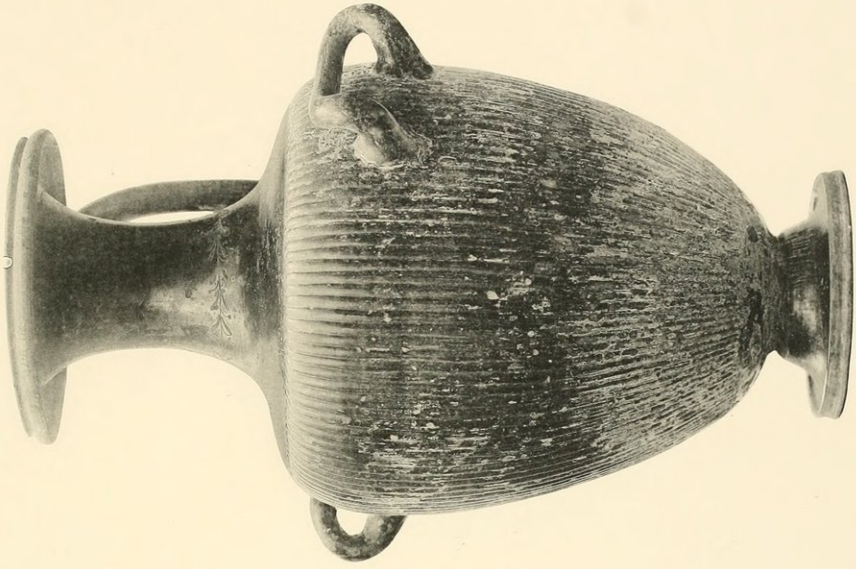
39

Sirene.

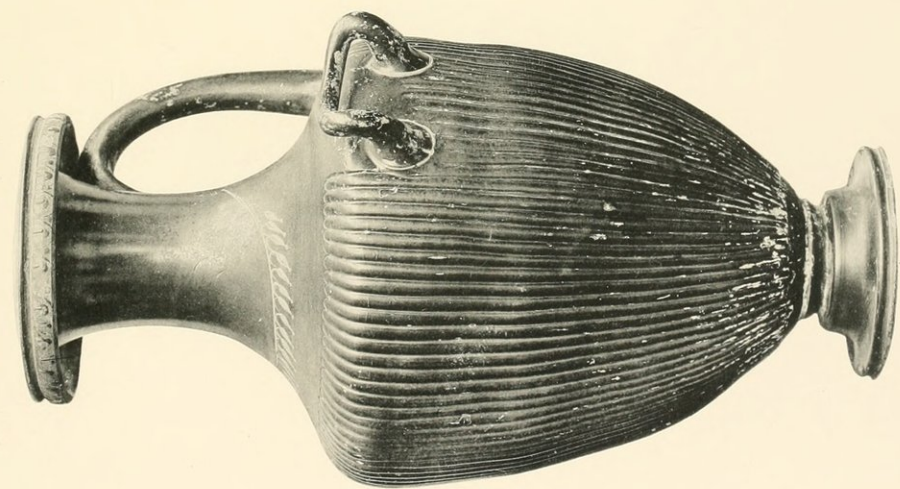


42

Urne cinerarie.

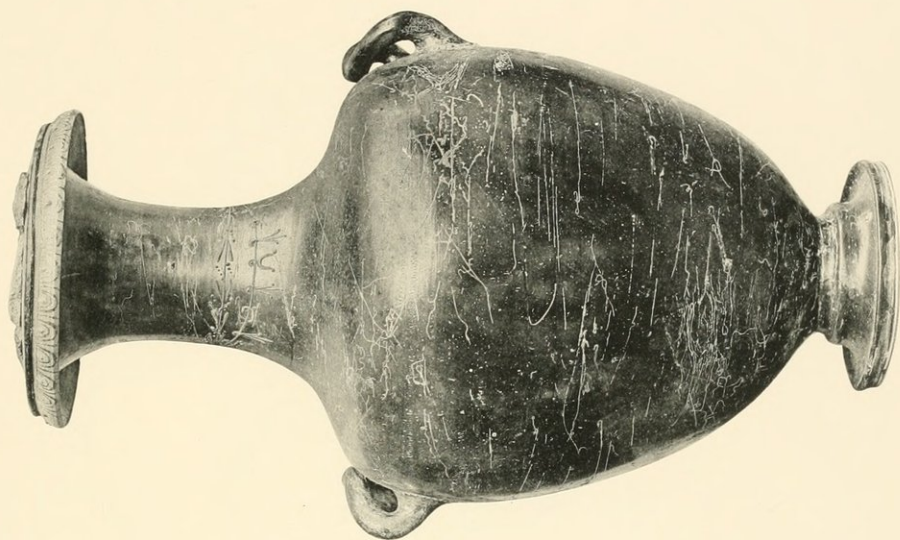


43

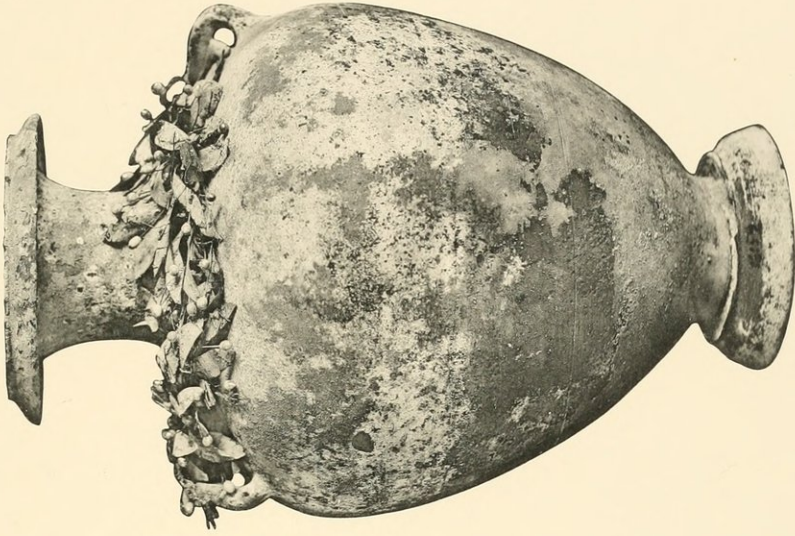


44

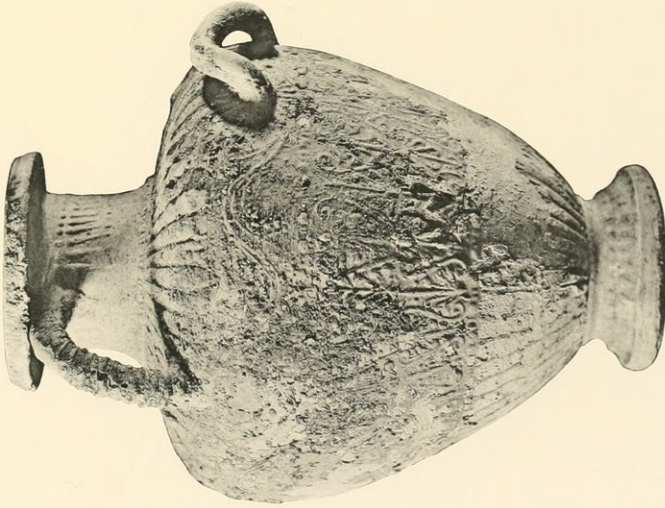
Urne cinerarie.



45

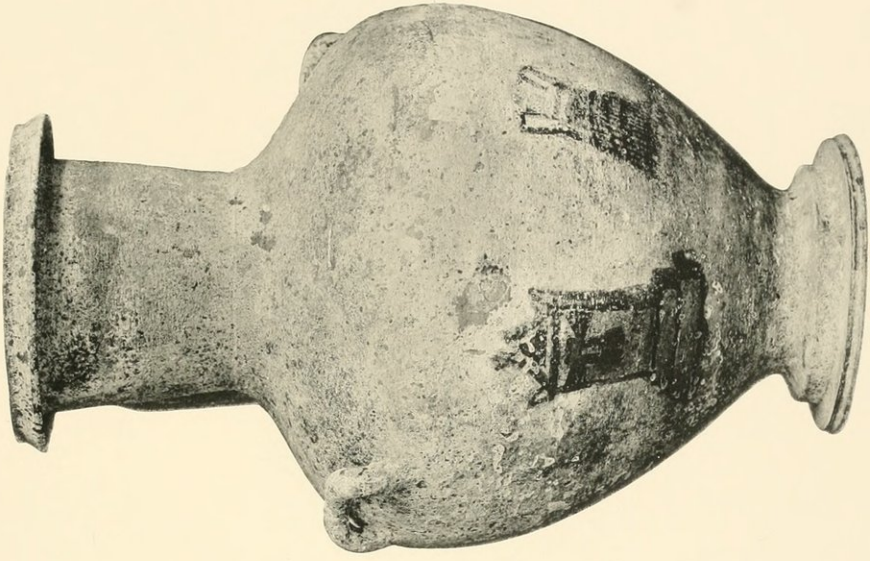


47

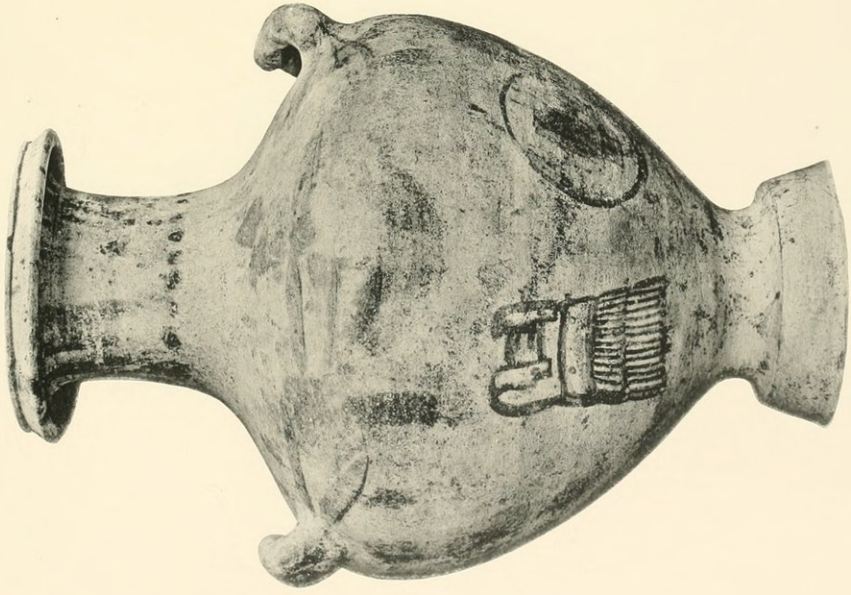


46

Urne cinerarie.

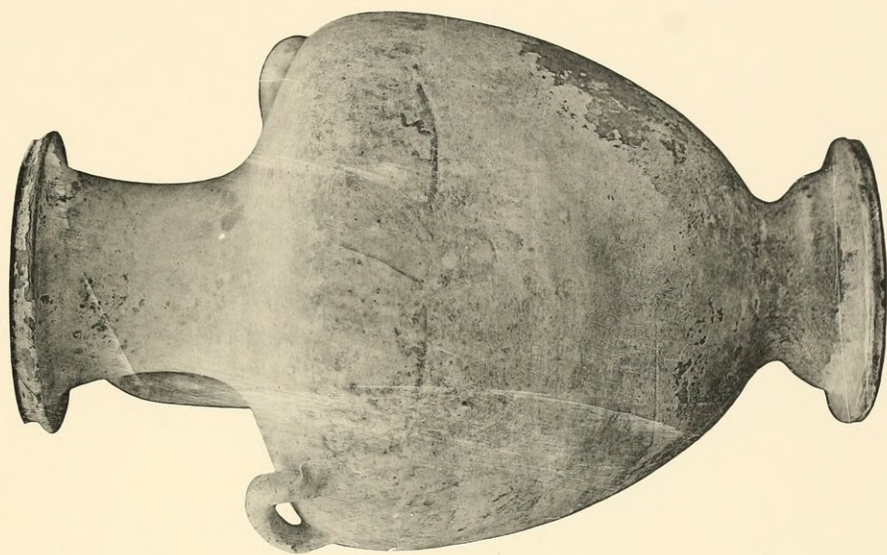


49

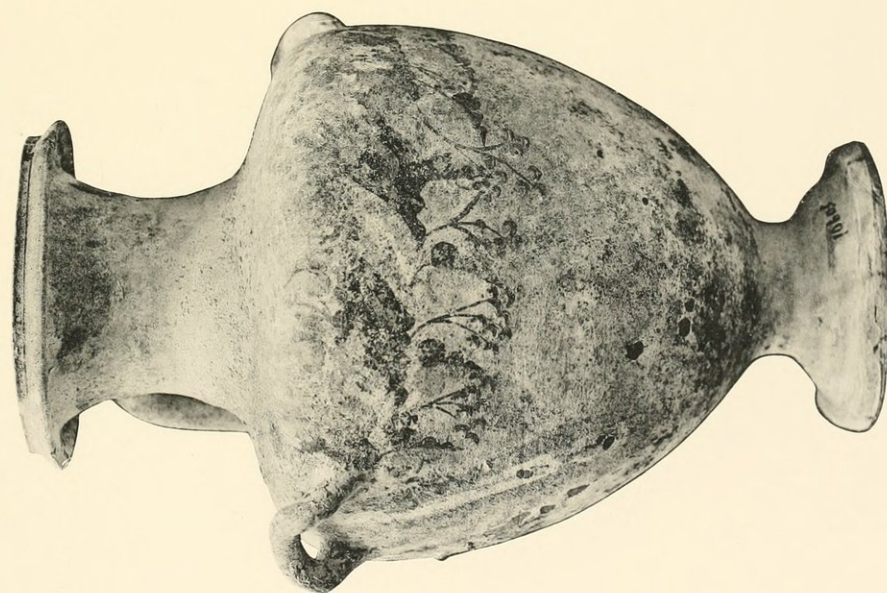


48

Urne cinerarie.

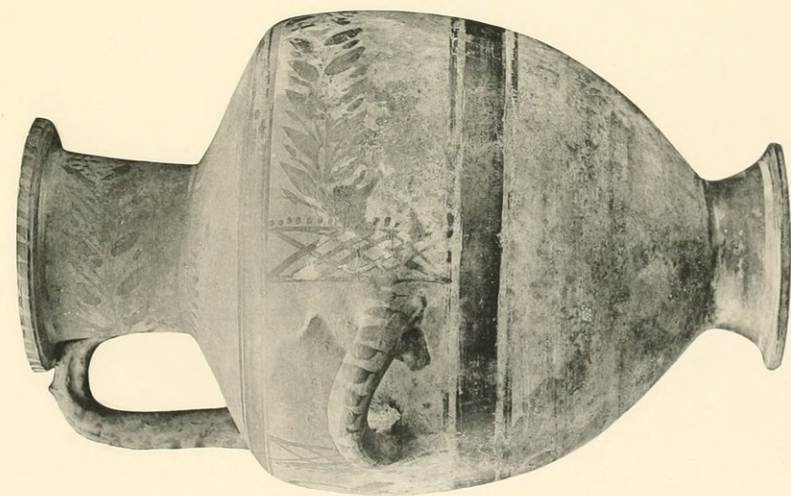


51

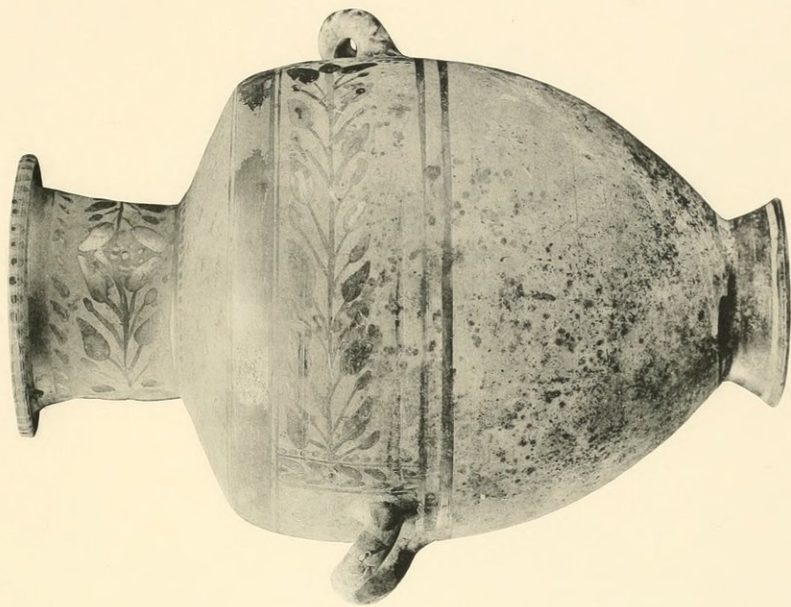


50

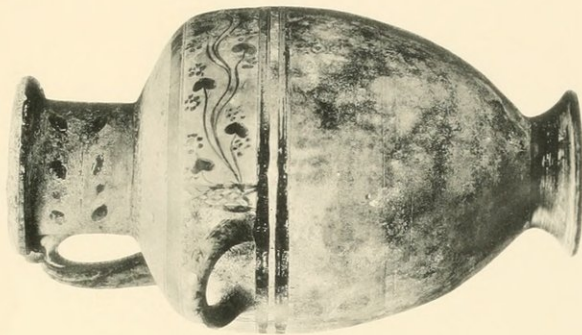
Urne cinerarie.



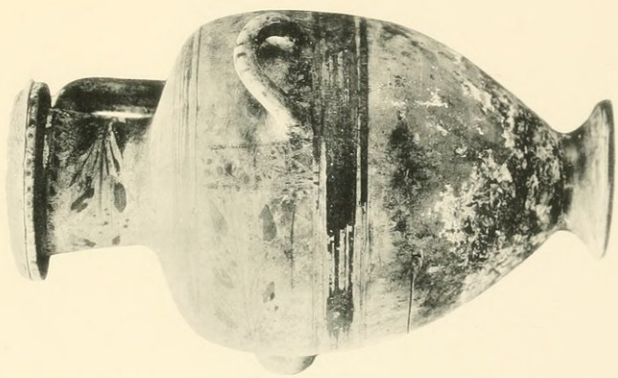
52



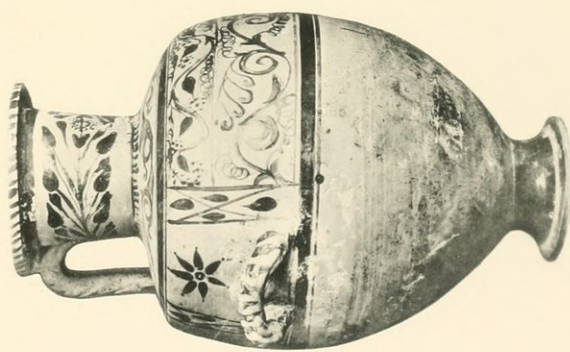
53



56

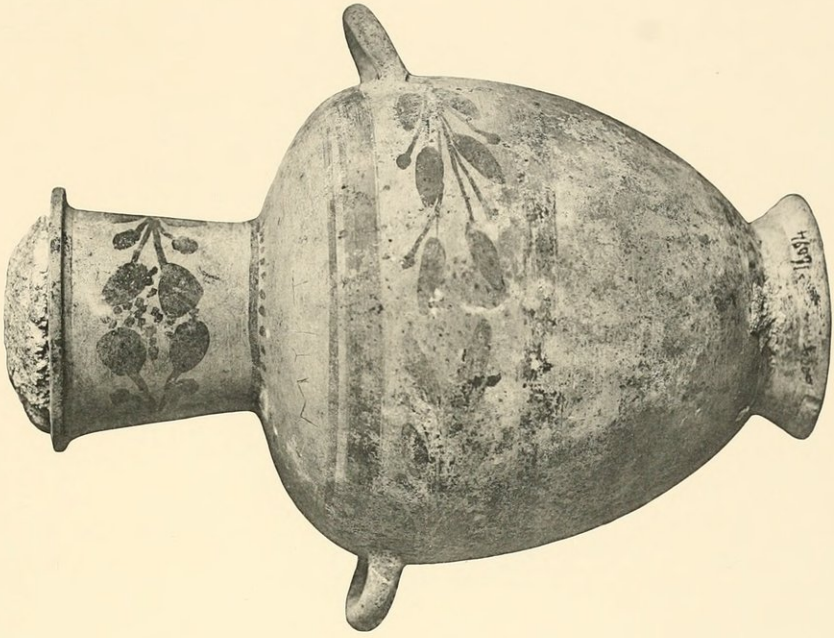


55

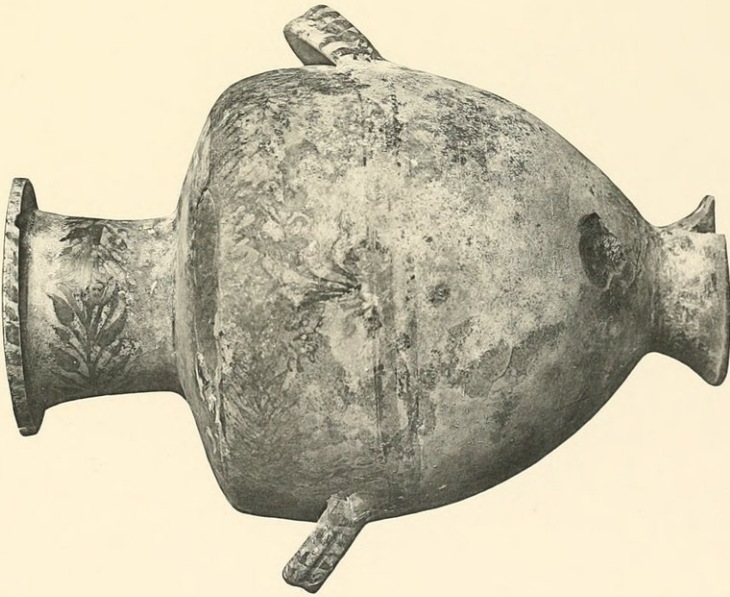


54

Urne cinerarie.

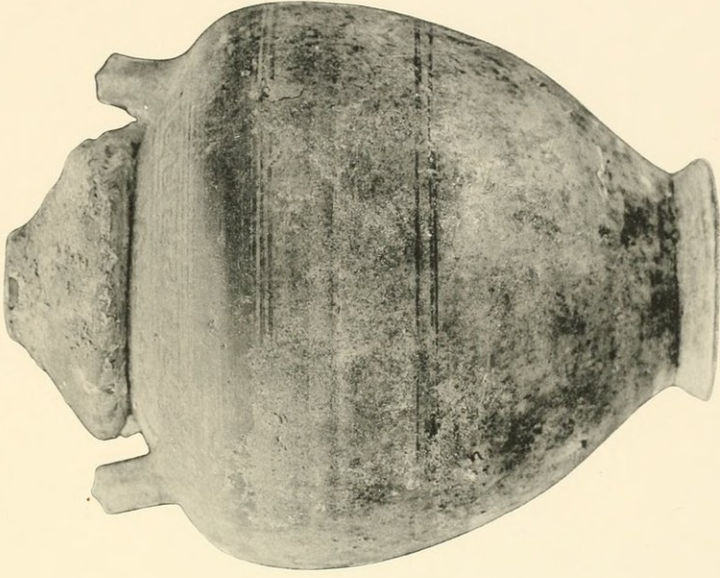


58

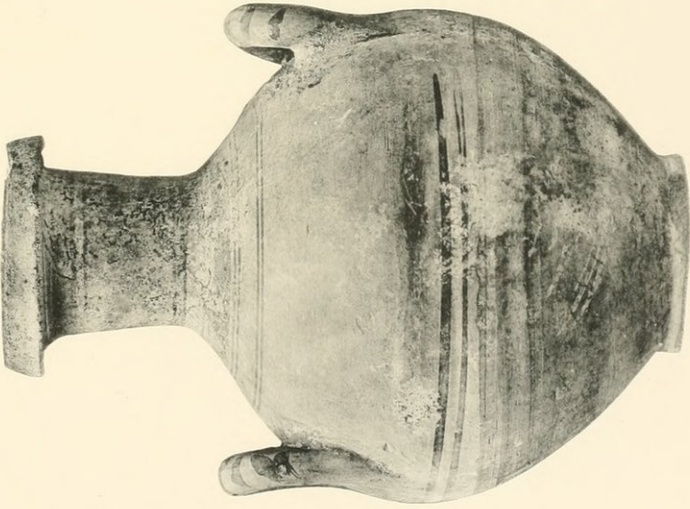


57

Urne cinerarie.

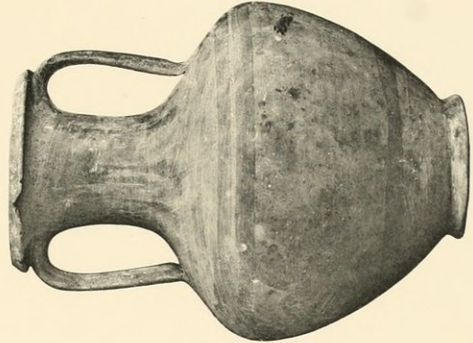


60

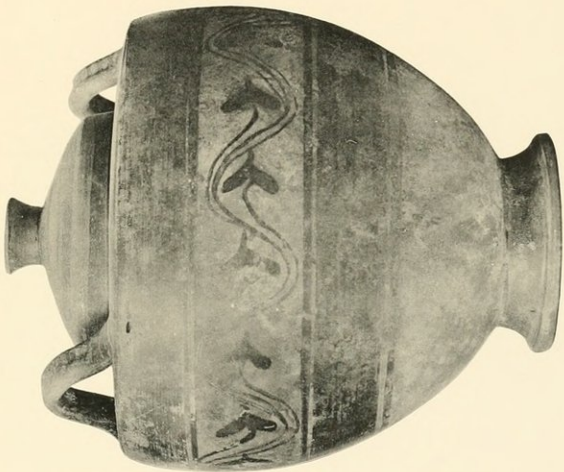


59

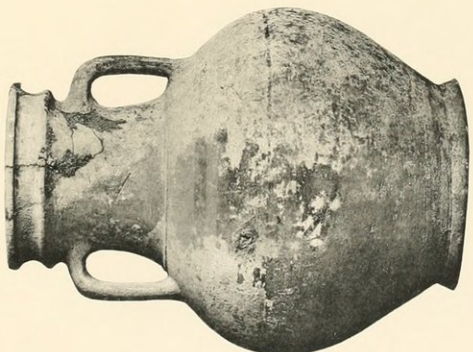
Urne cinerarie.



63



62



61

Urne cinerarie.



64

Pyxis.

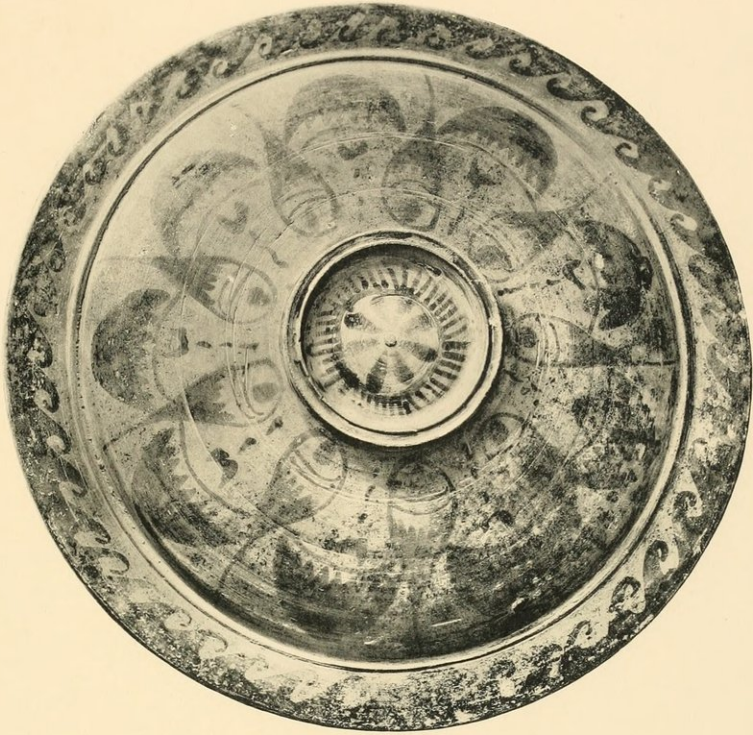


65



66

Vasi smaltati d'azzurro.



67. Pyxis (Coperchio)



68



69

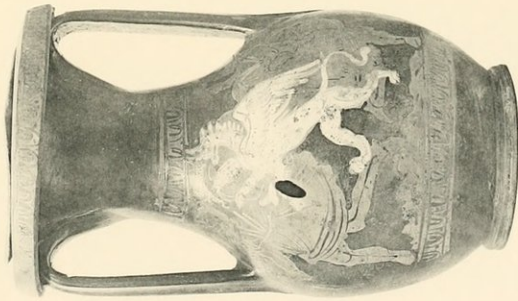


70

Lechiti.

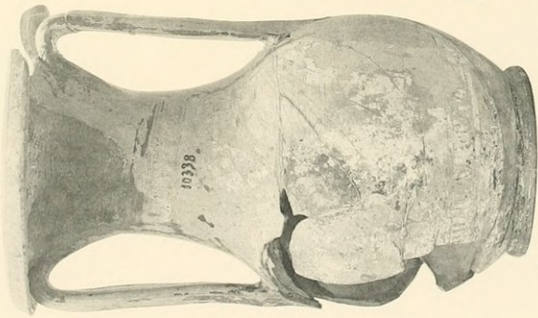


72



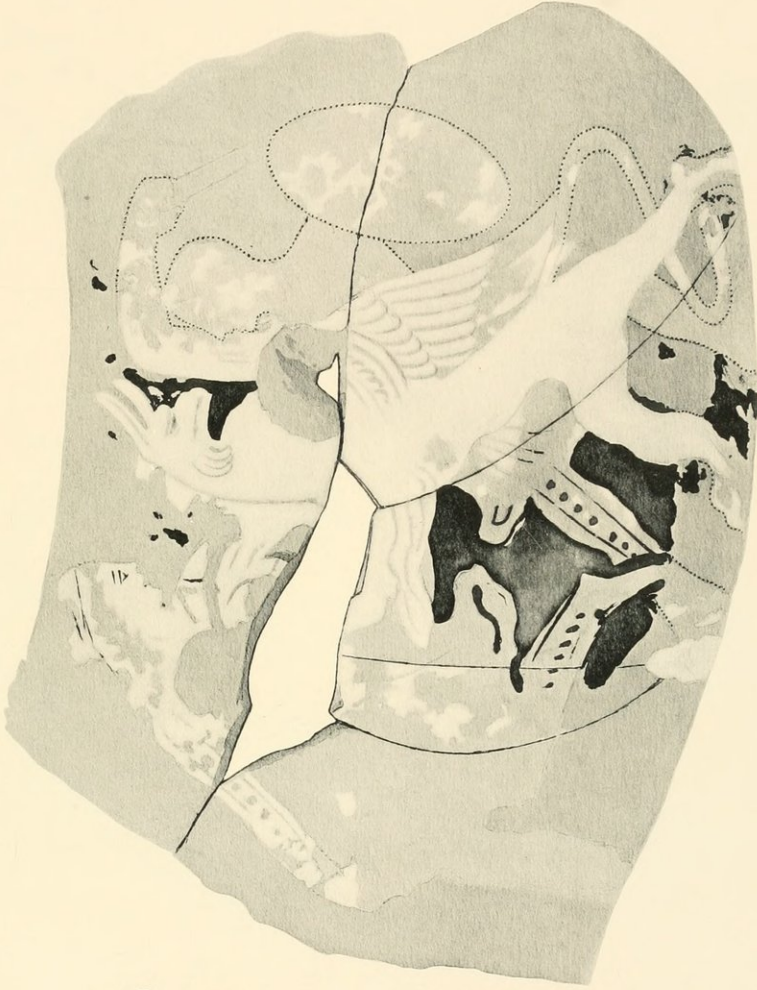
71

Feliche.

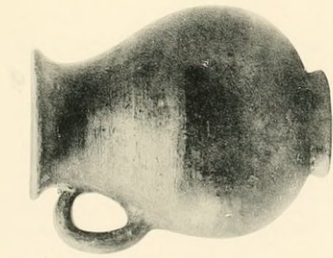


73

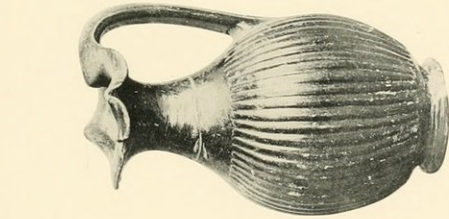
Peliche.



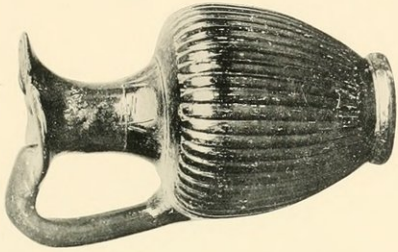
74



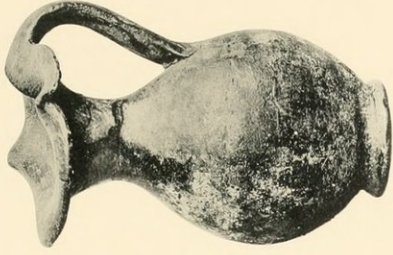
75



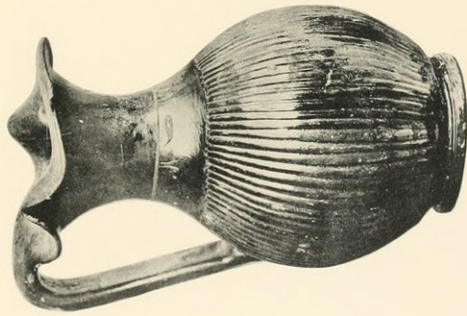
76



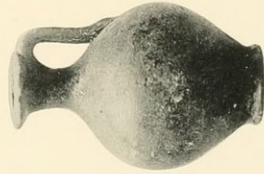
77



78



79



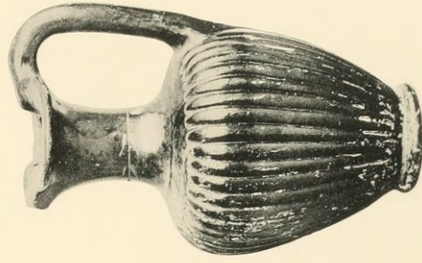
81



80

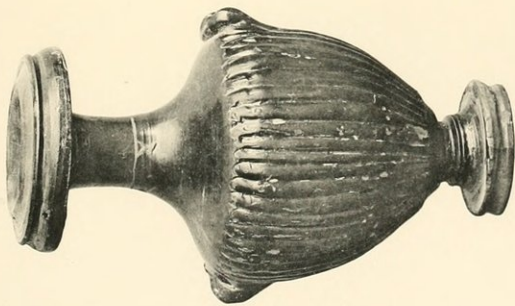


82

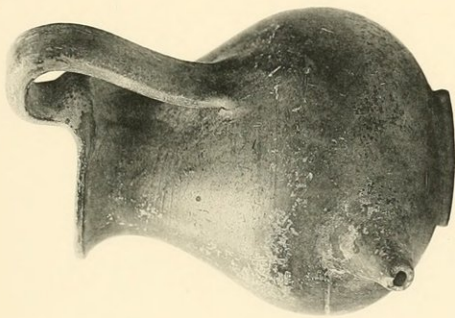


83

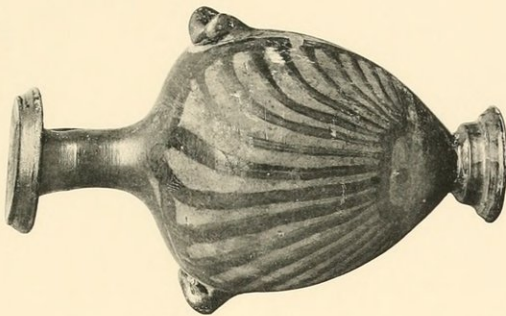
Terra cotta. - Vasi diversi.



84



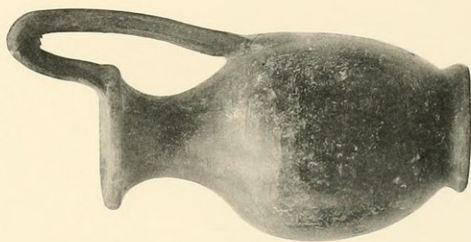
85



86



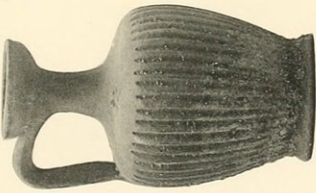
87



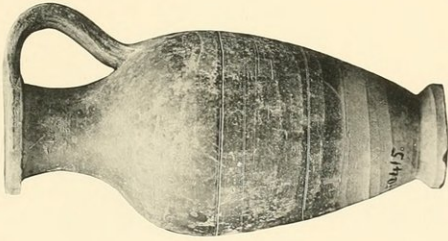
88



89



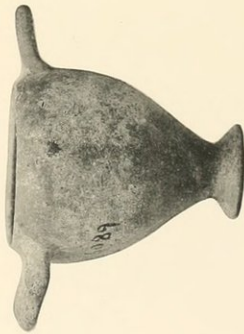
90



91



92



93

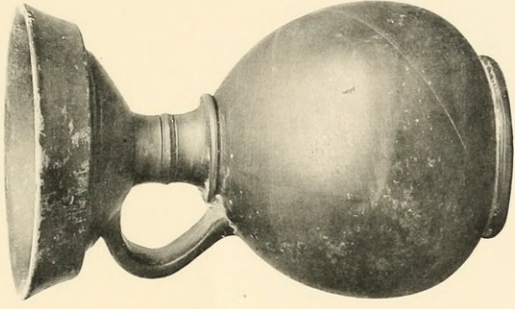


94



95

Terra cotta. — Vasi diversi.



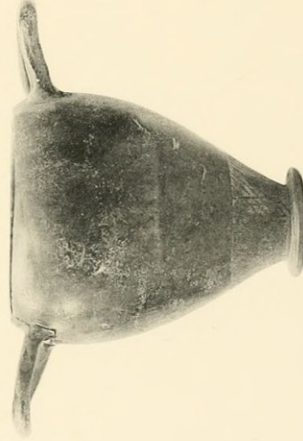
98



97



96



100



101



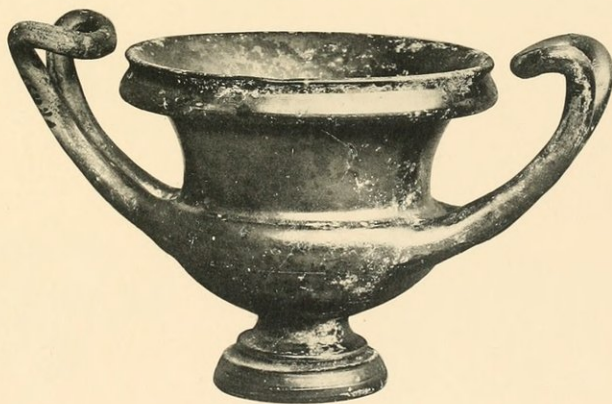
99



102



103



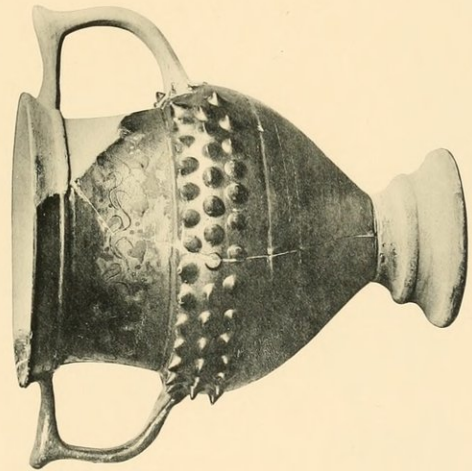
104



105



108



107



106

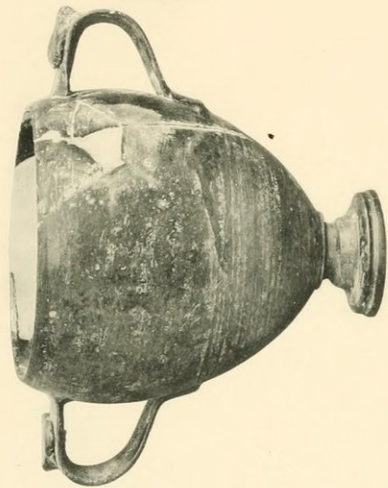


109

Terra cotta. — Vasi diversi.



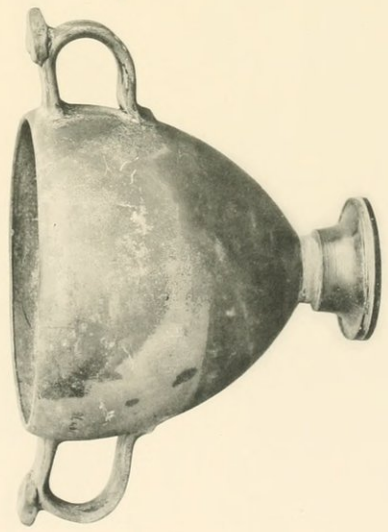
110



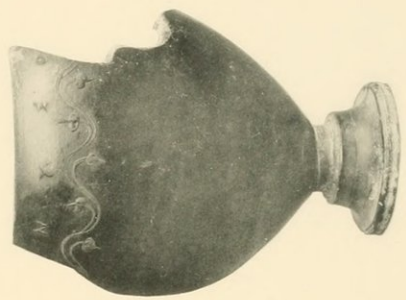
111



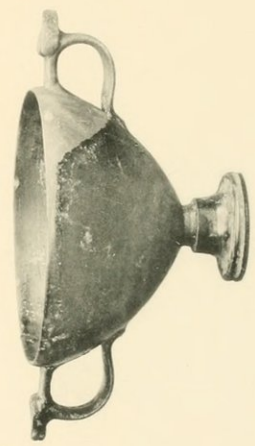
112



113



115



114

Terra cotta. - Vasi diversi.



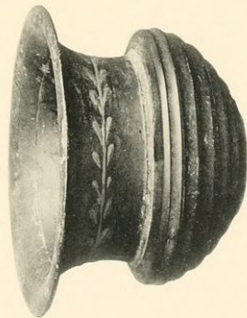
116



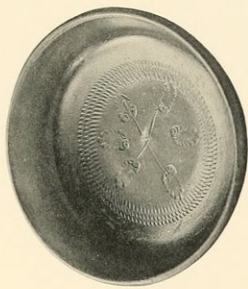
117



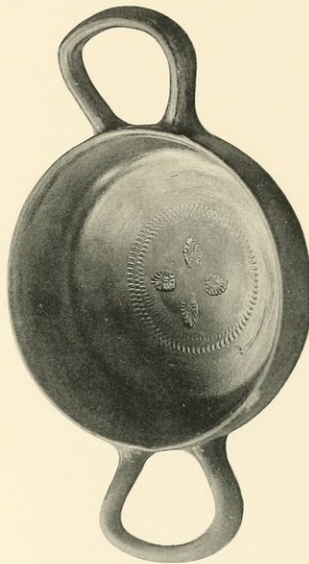
122



118



123



121

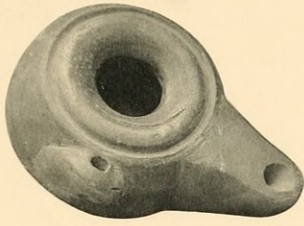


119

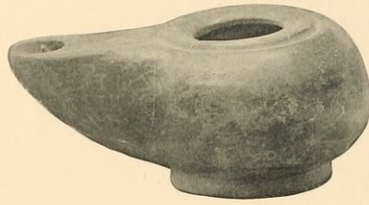


124

Terra cotta. — Vasi diversi.



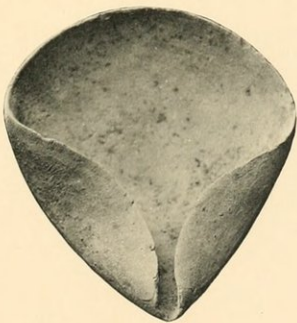
125



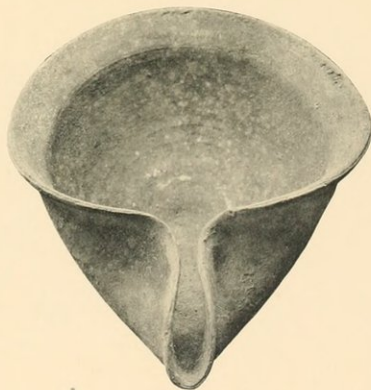
126



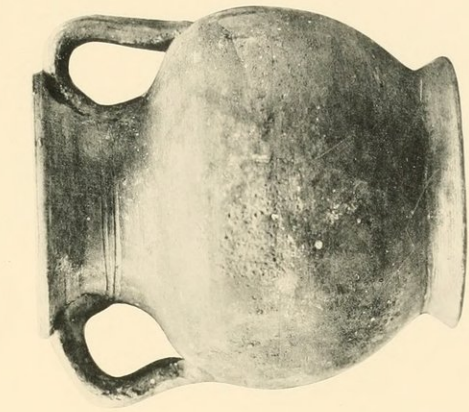
127



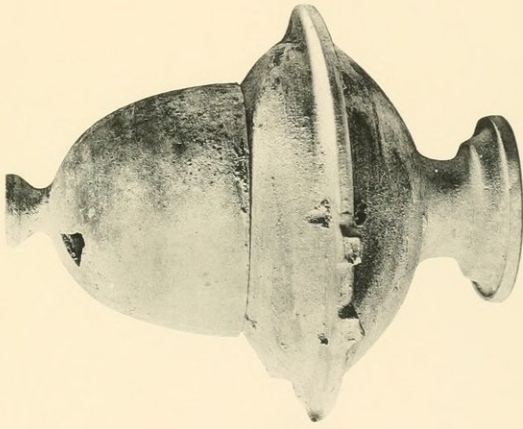
128



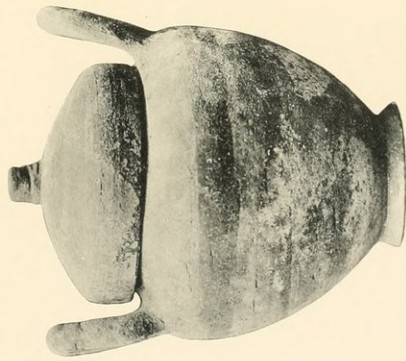
129



132

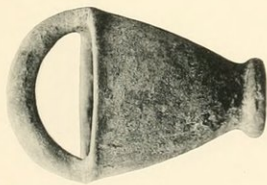


131

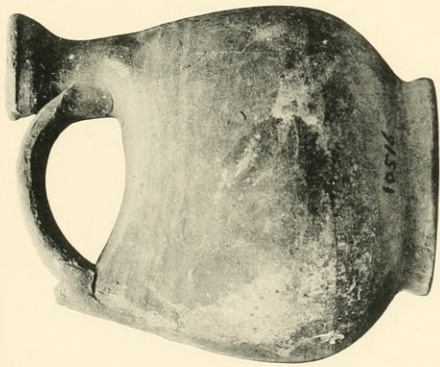


130

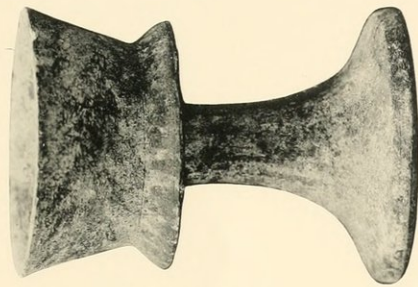
Terra cotta. - Vasi diversi.



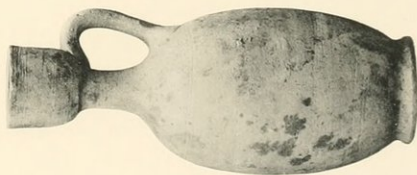
133



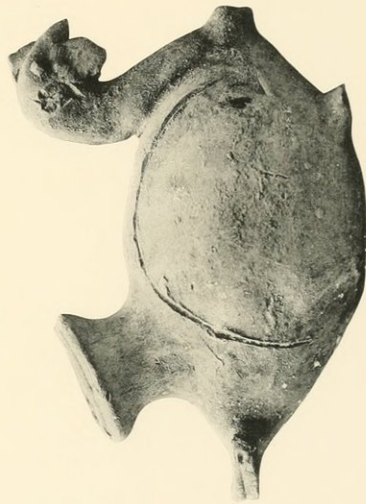
135



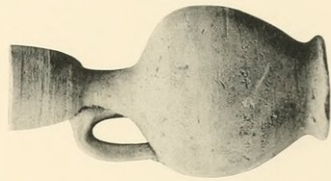
136



134



137



138



139



140



141



142



143



144



145



146



147



148



149



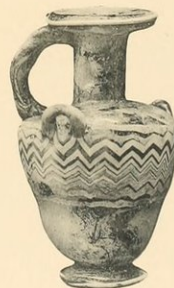
150



152



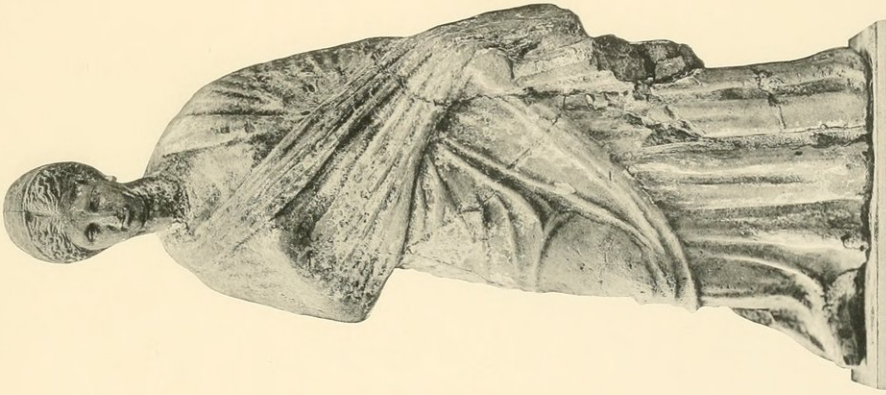
153



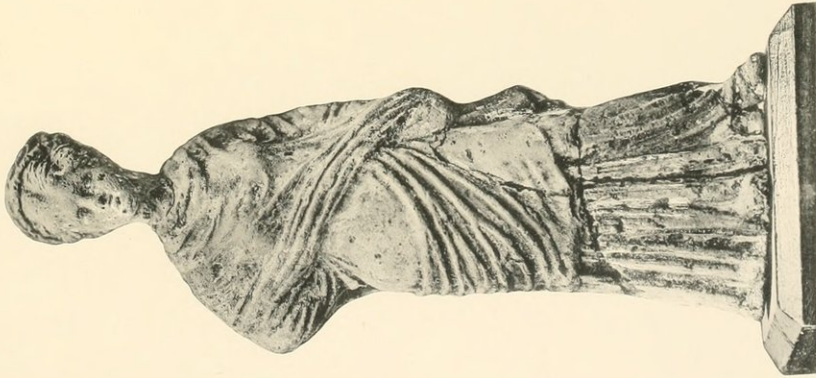
151



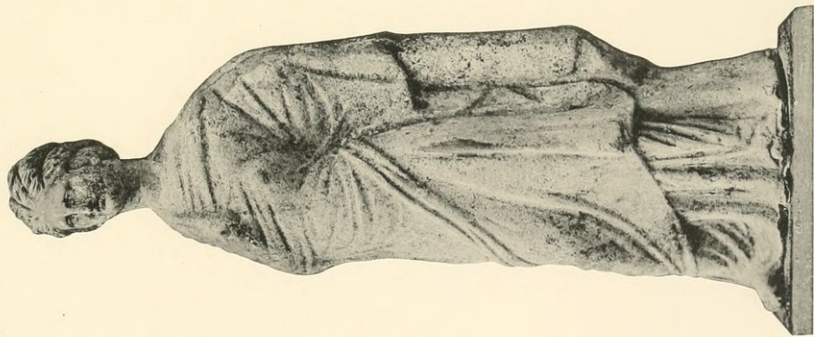
156



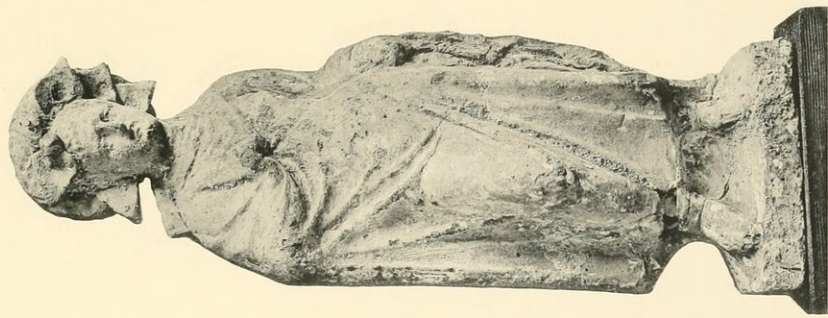
155



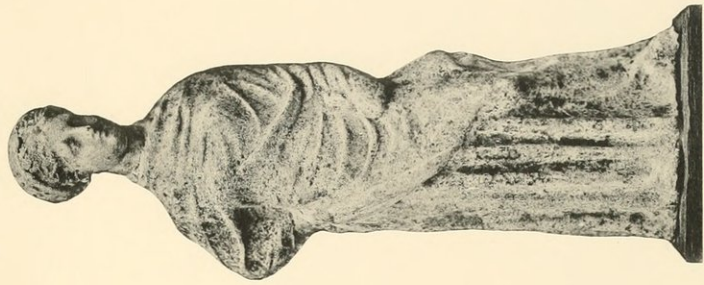
154



157



158



159

Terra cotta dipinta. — Figurine femminili in piedi.



160



161



162



163



164



165



166



167



168



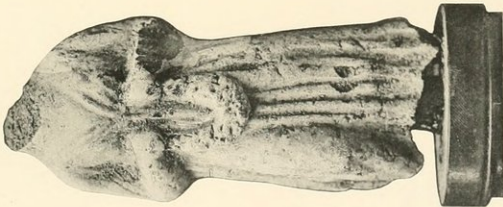
169



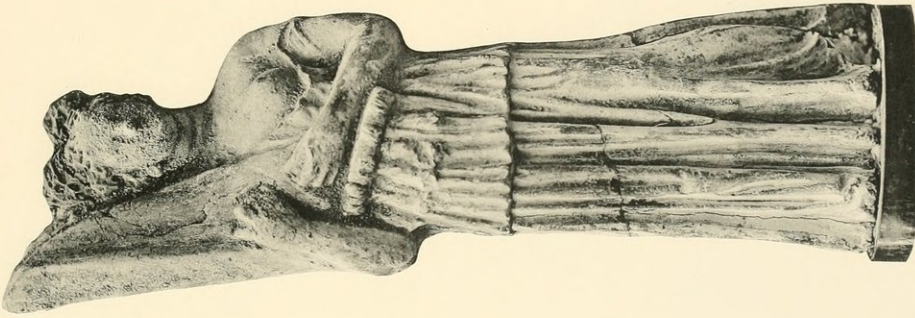
170



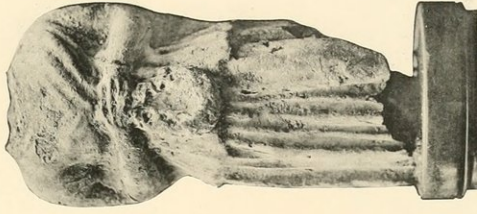
171



172



173



174



175



176



177



178



179



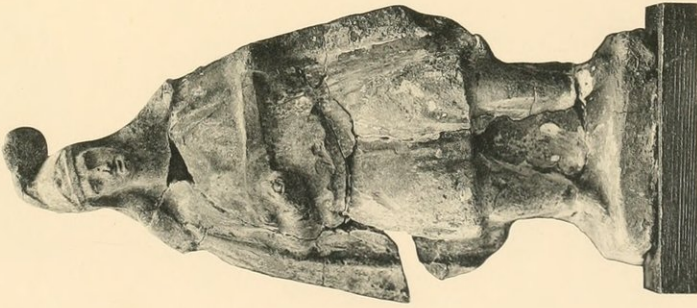
180



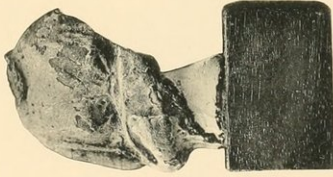
181



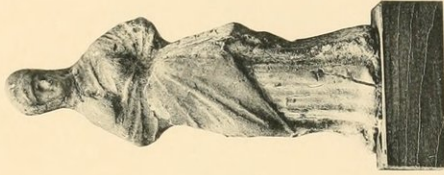
182



183



184



185



186

Terra cotta dipinta. — Statuine diverse.



187



188



189



192



190



191



193



194



195



196



197



198



199



200



201



202



203



204



205



206



207



208



209



210



211



212



213



214



215



216



217

+ 463



218

= 462



219

+ 460



220



221



222



223



224



225



226



227



228



229



230



231



232



233



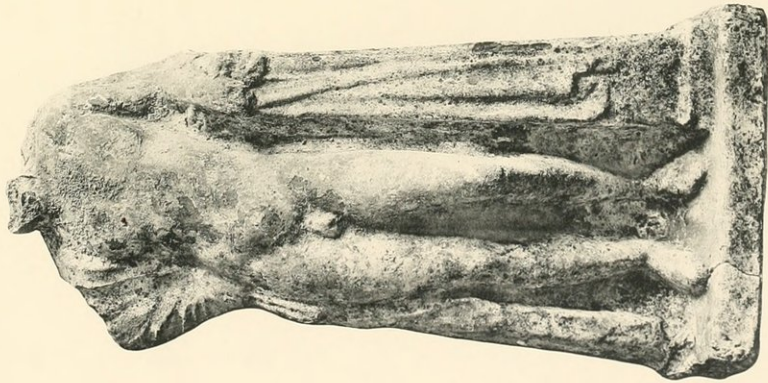
234



235



236



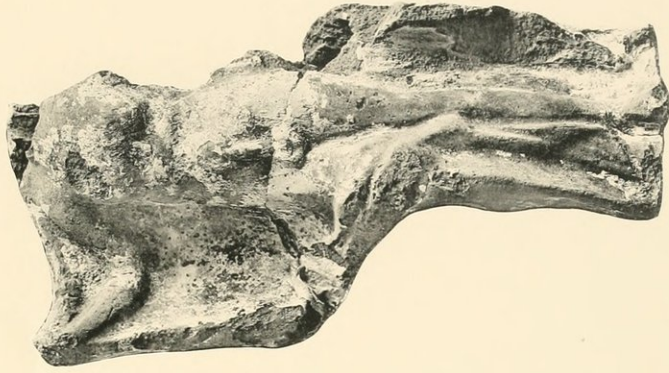
237

Terra cotta dipinta — Divinita (?)



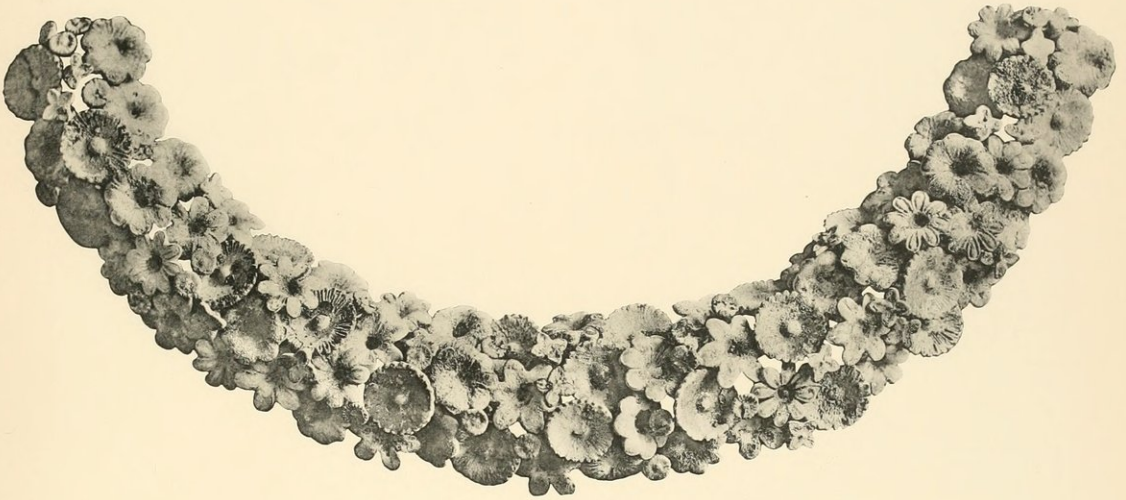
238

Gesso dipinto. — Ercole. — Dionysos.

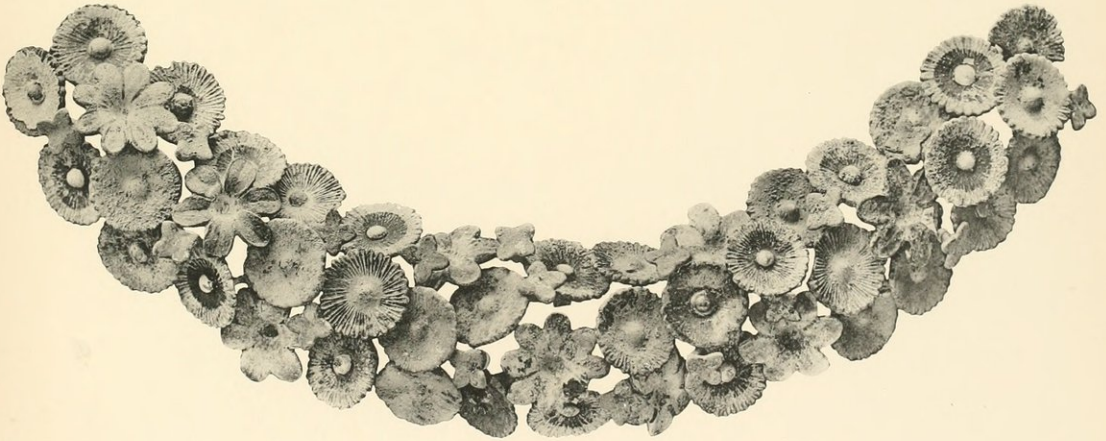


239

Terra cotta dipinta. — Ermafrodito.



240



241



242



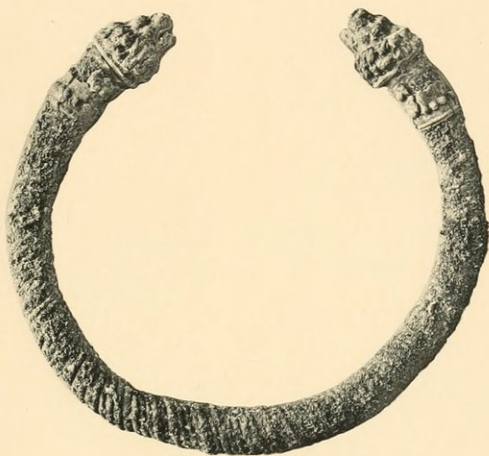
243



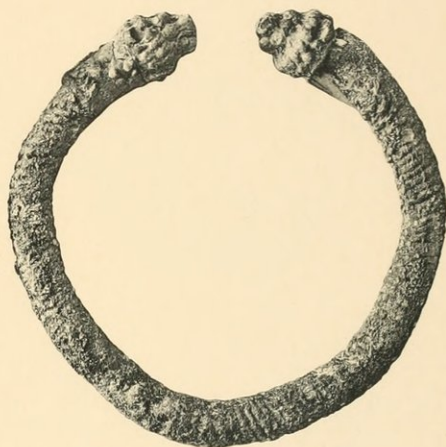
244



245



246



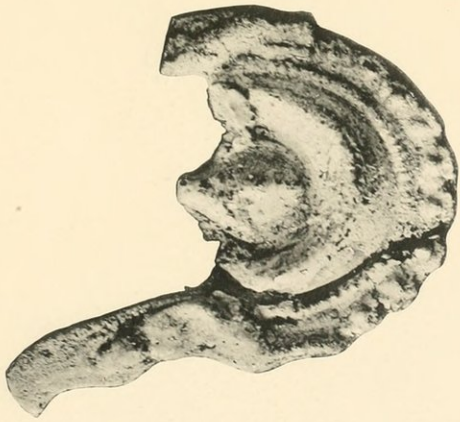
247



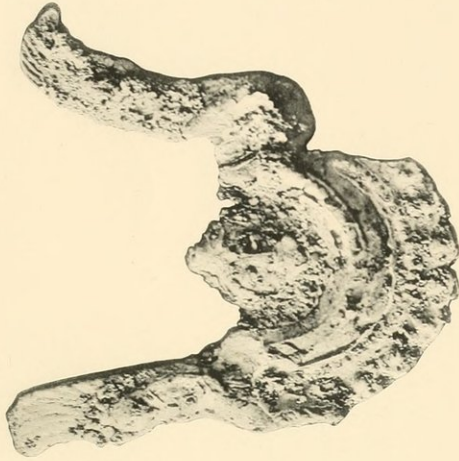
248



249



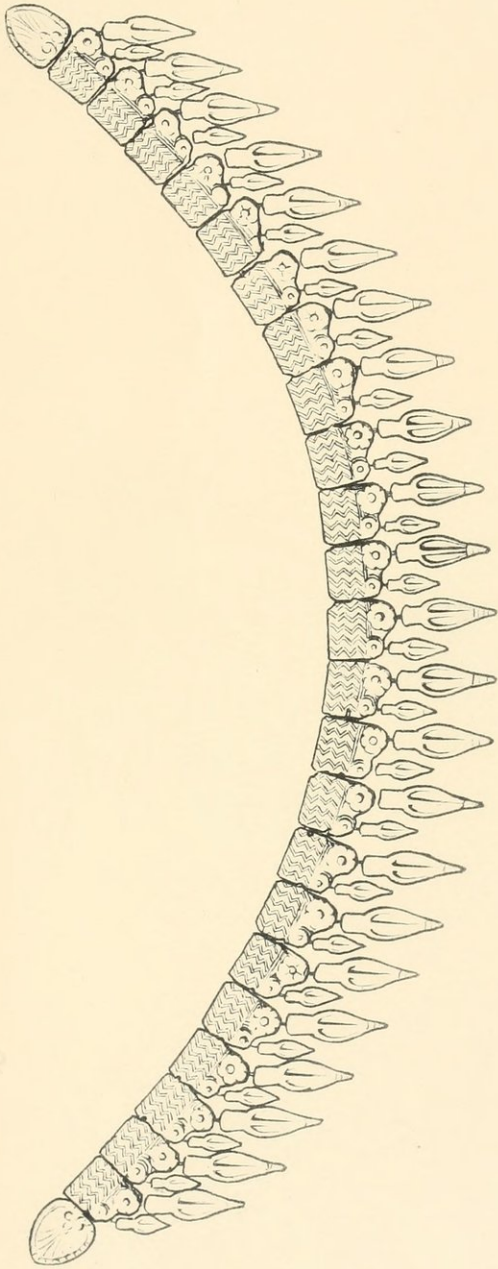
250 - 251



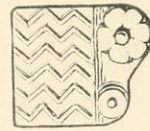
252 - 253 - 254 - 255



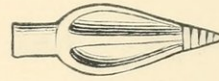
Terra cotta dorata. - Medaglioni e pendenti.



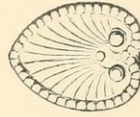
255 a



b



c



d

Terra cotta dorata. — Collana.



256



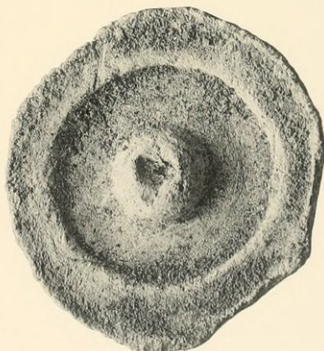
257



258 - 259 - 260 - 261 - 262 - 263 - 264



265



266



267



268



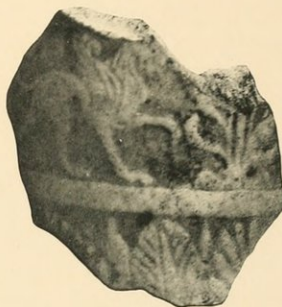
269



270



271



272



273



274



275



276



277



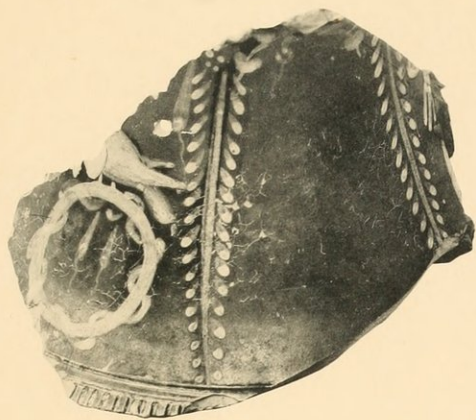
278



279



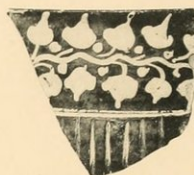
280



281



282



286



283



284



285



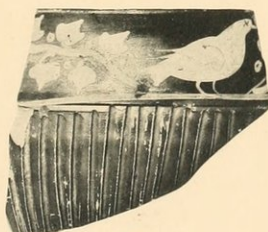
287



288



291



289



290



292









